

## M4 Carbon Steel Zinc Plated Butterfly Wing Nut for Heavy Industry at M1-M16 Size

Our Product Introduction

for more products please visit us on [metalscrewfastener.com](http://metalscrewfastener.com)

### Basic Information

- Place of Origin: Guangdong, China
- Brand Name: FineExpress
- Model Number: FineExpress Nut022
- Minimum Order Quantity: 50000
- Price: \$0.06/pieces 1000-9999 pieces
- Packaging Details: 1.1000pcs / plastic bag,20kgs/ carton ,then put on the wood pallet ,  
2.Carton size:28cm\*18cm\*13cm,  
3.Wood pallet size:118cm\*113cm,Weight:700~800Kg  
Bulk:0.8 cubic  
4.The weight of 20 FT Container:20~25 Tons  
5,As your requirements
- Supply Ability: 500000000 Set/Sets per Week



### Product Specification

- Finish: ZINC PLATED, Passivated, Chrome Plated, Nickel Plated, Polished, Custom
- Measurement System: Imperial (Inch)
- Application: Heavy Industry, Mining, Water Treatment, Healthcare, Retail Industry, Food & Beverage, General Industry, Oil & Gas, Automotive Industry
- Standard: DIN
- Size: M1~M16
- Surface Treatment: Nickel Plated,Zinc Plated,Passivation, Etc.
- Grade: 6.8/ 8.8/ 10.9/ 12.9
- Delivery Time: In Stock 5~7 Working Days, Customized 15~25 Working Days
- Service: OEM Customized Services
- Package: Small Packing+Carton Packing+Pallet
- Certificate: ISO9001:2015, SGS, RoHs, MTC
- MOQ: 1 Piece In Stock, 20,000 Pcs Customized



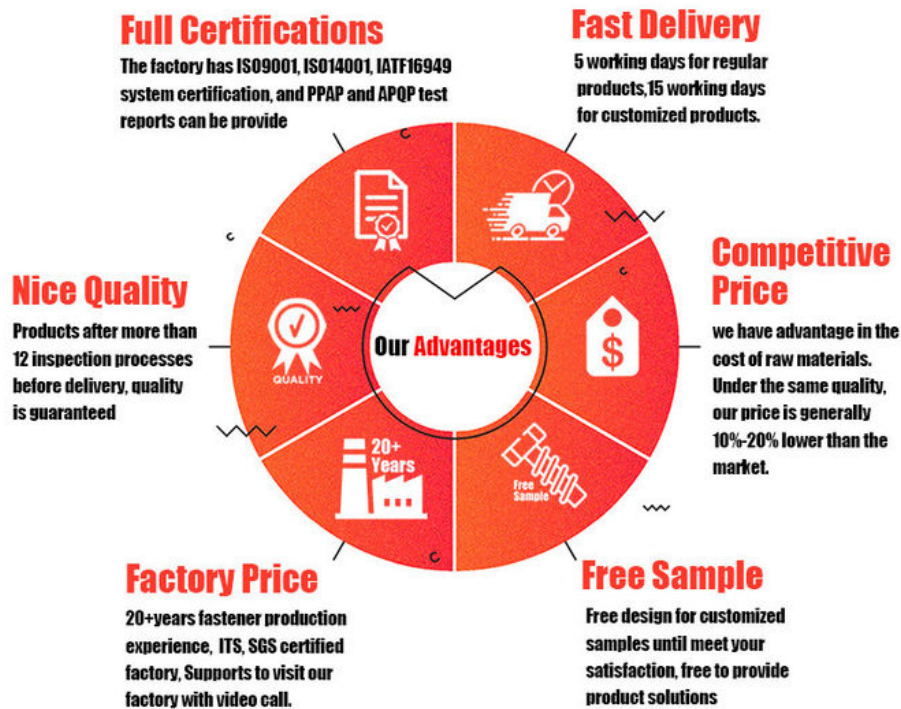
### More Images



## Product Description

M4 Carbon Steel Zinc Plated Butterfly Wing Nut for Heavy Industry at M1-M16 Size

### FINEX | Fine and Express FASTENERS



Our M4 Carbon Steel Zinc Plated Butterfly Wing Nuts, available in sizes ranging from M1 - M16, are built from high - grade carbon steel. Carbon steel offers excellent strength and durability, making it an ideal choice for heavy - industry applications. In environments where components are subjected to significant stress, vibrations, and heavy loads, these wing nuts can withstand the rigors without deforming or breaking. Whether used in large - scale manufacturing machinery, construction equipment, or mining operations, the carbon - steel body ensures long - term reliability.

### Protective Zinc Plating

To enhance the nuts' resistance to harsh working conditions, a zinc - plating layer is applied. Zinc plating provides a robust barrier against corrosion, protecting the carbon - steel core from rust and oxidation. In heavy - industry settings, where exposure to moisture, chemicals, and extreme temperatures is common, this corrosion resistance is crucial. It extends the lifespan of the wing nuts, reducing the need for frequent replacements and maintenance costs. Additionally, the zinc plating gives the nuts an attractive finish, adding to their overall aesthetic appeal.

### Distinctive Butterfly Wing Design

The butterfly wing design of these nuts is a key feature that sets them apart. The large, wing - shaped ends provide an easy - to - grip surface, allowing for quick and convenient tightening and loosening by hand. This is highly beneficial in heavy - industry applications where access to tools may be limited, or where rapid adjustments are required. Workers can easily manipulate the wing nuts without the need for additional tools, saving time and increasing efficiency. The design also ensures a secure grip, even when wearing gloves or in greasy conditions.

### Versatile Sizing from M1 - M16

With sizes available from M1 - M16, our butterfly wing nuts offer exceptional versatility. The M4 size, in particular, strikes a balance between strength and manageability, suitable for a wide range of applications. The smaller M1 - M3 sizes are perfect for delicate machinery or components where a more precise and lightweight fastening solution is needed. On the other hand, the larger M5 - M16 sizes can handle heavier loads and are ideal for more robust industrial equipment. This wide range of sizes ensures that there is a suitable nut for almost any heavy - industry fastening requirement.

## **Ideal for Heavy - Industry Applications**

These wing nuts are specifically designed for heavy - industry use. In the manufacturing sector, they can be used to secure parts on conveyor belts, adjust machinery components, or fasten guards and covers. In construction, they are useful for assembling scaffolding, adjusting formwork, or attaching safety equipment. In the mining industry, they can be found in the assembly and maintenance of mining machinery, ensuring that critical components remain firmly in place. Their ease of use, combined with their strength and durability, makes them an essential component in heavy - industry operations.

## **Rigorous Quality Control**

Quality is our top priority. Every M4 Carbon Steel Zinc Plated Butterfly Wing Nut, regardless of size, undergoes a rigorous quality control process. We start by carefully sourcing the highest - quality carbon - steel raw materials, ensuring they meet strict strength and durability standards. During the manufacturing process, the production of each nut is closely monitored to ensure precise threading, accurate wing - nut dimensions, and a consistent zinc - plating layer. After production, each nut is inspected for any defects, and its mechanical properties are tested to ensure it can withstand the demands of heavy - industry applications. This commitment to quality ensures that you receive a reliable product that performs flawlessly in your heavy - industry projects.

## **Exceptional Customer Support**

Our dedicated customer service team is here to assist you. Whether you have questions about the product's compatibility with specific heavy - industry equipment, need advice on the best size for your application, or have any concerns regarding the product's performance, we're just a message or call away. We pride ourselves on providing prompt and detailed responses to all inquiries, ensuring that you have the information you need to make informed decisions. From the moment you consider purchasing our wing nuts to after - sales support, we aim to make your experience with our products as smooth and satisfactory as possible.

Choose our M4 Carbon Steel Zinc Plated Butterfly Wing Nut for your heavy - industry fastening needs, available in sizes M1 - M16, and experience the perfect blend of strength, practicality, and versatility.



**Pozi**



**Phillips**



**Anti-theft  
Triangle**



**Slotted**



**Hex Socket**



**Torx**



**Torx-internal  
Tamber proof pin**



**H type  
anti theft**



**Tri-wing**



**Two-Hole  
Tamber proof**



**One way  
anti theft**



**Square Slot  
Combination**



**Phillips Slot  
Combination**



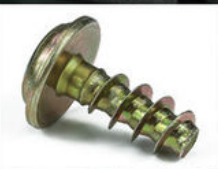
**Slot 6 Lobe  
Combination**



**Tri-wing internal  
Tamber proof pin**



**Blue Zinc**



**Yellow Zinc**



**White Zinc**



**Black Zinc**



**Nickel Plated**



**Black Oxide**



**Anodizing**



**Dacromet**



**Black  
Electrophoresis**



**Antique Bronze**



**Green**



**Baking Finish**





**What We Produce is Not Just a Screw. We Provide a Guarantee of Secure Fastening**

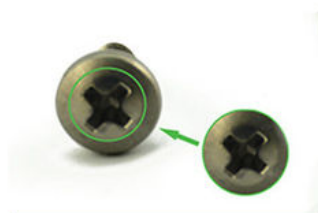


## Specification

	More Detail Informations
Available Material	1.Stainless Steel: SS303, SS304, SS316, SS410, SS420; 2.Carbon steel: C1006,C1010,C1018,C1022,C1035K,C1045; 3.Brass: C3602,C3604,Hpb59,Hpb62,Hpb65,Hpb58,Hpb70 ; 4.Aluminum: Al6061, Al6063 etc or as your requirements
Head type	CSK Head,Pan Head,Truss Head,Hexagon Head,Round Head,Oval Head,Button Head,Cap Head,Cheese Head,etc.
Hardness	Carbon Steel:HRC:28~35 ,HV450~700 Alloy Steel:HRC:32~39(grade10.9) HRC:39~44(grade12.9)
Finish	Zinc plated, Nickel plated, Bronze, Copper,Phosphate, Oxidation black, Passivation, Tin, Dacromet, Gold, Chrome, Silver, Phosphorization,Zinc-nickel alloy plated etc.
Sample Available	The sample is free of charge if we have the existing tooling,you only need to pay for the freight cost
Delivery time	Samples time 3-5 working days, Lead time 20-25 working days
Pricing Term	EXW Dongguan(FCA),FOB, CIF, CNF, DDU,etc.
Packing	Bulk in PE bag or Small boxes.then in carton .pallet
Payment term	TT (30% in advance as deposit, balance before delivery) , L/C, Western Union,PayPal etc
Management system	ISO9001:2015
Certificate	ISO,ROHS

## Why Choose Us

### NO1.Drive compariason



Our screws: cross recess drive remains intact after repeatedly used.

VS



Bad screws on the market: cross recess drive cannot be used after repeatedly used, they may slip or tear out the Philips screw head.

### NO2.Torque comparison



Our screws: Nylon patch is high quality, prevailing-torque is more

VS



Bad screws on the market: prevailing-torque is 0 after it is screwed in and out for five times, nylon patch will peel off.

### NO3.Screw Plating Comparison



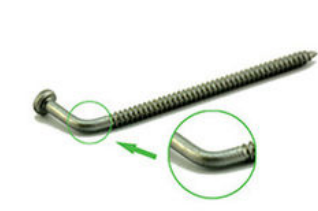
Our screws: good finish, clear thread, even coating, bright appearance.

VS



Bad screws on the market: bad finish, uneven coating, thread is oxidized, the finish is blacked.

### NO4.Screw Material Comparison



Our screws: we use quality carbon steel material, Chemical Element content in Steel meets the requirement of ISO standard, they won't be broken after 90° bent, high strength, good toughness.requirement of ISO

VS



Bad screws on the market: bad carbon steel material, Chemical Element content in Steel doesn't meet the requirement of ISO standard, they will be easily broken after 90° bent, high strength and bad toughness.



## NO5.Mechanical Properties comparison



Our self tapping screws: our screws have high strength, enough hardness, good toughness after heat treated, they won't be broken after bent.

VS



Bad screws on the market: they have high strength and bad toughness, thread will easily be broken, because the screws are not tempered.

## NO6. Corrosion Resistance Comparison of SUS304



Our SUS304 screws: nickel chemical element content won't be less than 8, meets ISO requirement. The finish won't be oxidized, rusted and has good anti-corrosion capacity. standard, they won't be broken after 90° bent, high strength, good toughness.

VS



SUS304 screws on the market: nickel chemical element content will be less than 8, even doesn't have nickel plated, which doesn't meet ISO requirement. The finish will be oxidized, rusted and lose anti-corrosion capacity.

## Company Profile

# FINEX

**20 YEARS**  
**Non-standard Fasteners**  
**Customization Experience**

+86-13527934468

alianchen@finexfastener.com

**Contact us**





## Partners and Exhibitions



**Raw Material (IQC)**



**Head Size (IPQC)**



**Thread Size (IPQC)**



**Spot check on surface treatment**



**Image Measuring Instrument**



**Hardness Test**



**ROHS Test**



**Salt Spray Test**



**Tensile Force Test**



**Touque Test**



**Screw Optical Screener**



**FQC by Manual Selection**

## FAQ

**Q1: What is your main products and material supply?**

**A1:** Our main products are Electronic screws, Sems screws, Tapping screws, Chicago screws, Shoulder screws etc. Special Non-standard studs, Turning parts and High-end precision complex CNC Machining parts etc.

A2: Carbon Steel, Alloy Steel, Aluminum alloy,Stainless Steel, Brass, Copper ,Titanium alloy or according to your requirement.

Q2: When can I get the price?

A: We usually offer you a quotation within 12 hours, and the special offer is not more than 24 hours.Any urgent cases, please contact us directly by phone or send email to us.

Q3: What about the transportation and delivery date?

A: If the weight of goods more than 80kg,Normally we use shipment to transprot the orders. It is about 20-30days . If the weight of goods less than 80kg,or there are urgent, we can send the goods via air express,It is 3~5 days.

Q4: What's your packing?What to do in case of damaged goods during transport?

A1: Our Normal packing is bulking in Cartons, less than 20 kgs/carton, 48 cartons / pallet. We also can pack products according to your requirement.

A2: To avoid any subsequent trouble regarding quality issue, we suggest you check the goods once you receive them. If there is any transport damaged or quality issue, don't forget take the detail pictures and contact us as soon as possible, we will properly handle it to make sure your loss to reduce to the smallest.

Q5: Can I get discounts?

A: Yes, for big order, frequent customers, we give reasonable discounts.

Q6: Do you have enough capacity?

A: Our production equipment is a new imported equipment. We have a group of skilled workers who have been working for more than 10 years. Their production experience is very rich and their skills are very skilled. The screws can be 30 million pcs/month. We have sufficient funds to ensure the normal operation of the factory.



**Finexpress Precision Manufacturing (dongguan) Co., Ltd**



+86-13527934468



alianchen@finexfastener.com



metalscrewfastener.com

Building 2, No. 129 Xinmalian Xinma Road, Dalang Town, Dongguan, Guangdong, China