

## Stainless Steel Shaft Retaining Washer Plain Finish with Connection Function

Our Product Introduction

for more products please visit us on [metalscrewfastener.com](http://metalscrewfastener.com)

### Basic Information

- Place of Origin: Guangdong, China
- Brand Name: FineExpress
- Model Number: Retaining Washer
- Minimum Order Quantity: 50000
- Price: \$0.10/pieces 100-29999 pieces



### Product Specification

- Finish: Black, ZINC, Plain
- Style: Retaining Washer
- Material: Stainless Steel, Steel, 18-8 STAINLESS STEEL
- Application: Heavy Industry, Mining, Water Treatment, Healthcare, Retail Industry, Food & Beverage, General Industry, Oil & Gas, Automotive Industry, Electrical,electronics,cabint
- Standard: DIN
- Reliability Test: Mechanical Dimentions,salt Spray Endurance Test
- Service: Customized OEM
- Sample: Available
- Function: Connection,Fastening And Decoration
- MOQ: 1 Piece In Stock, 50,000 Pcs Customized
- Delivery Time: In Stock 5~7 Working Days, Customized



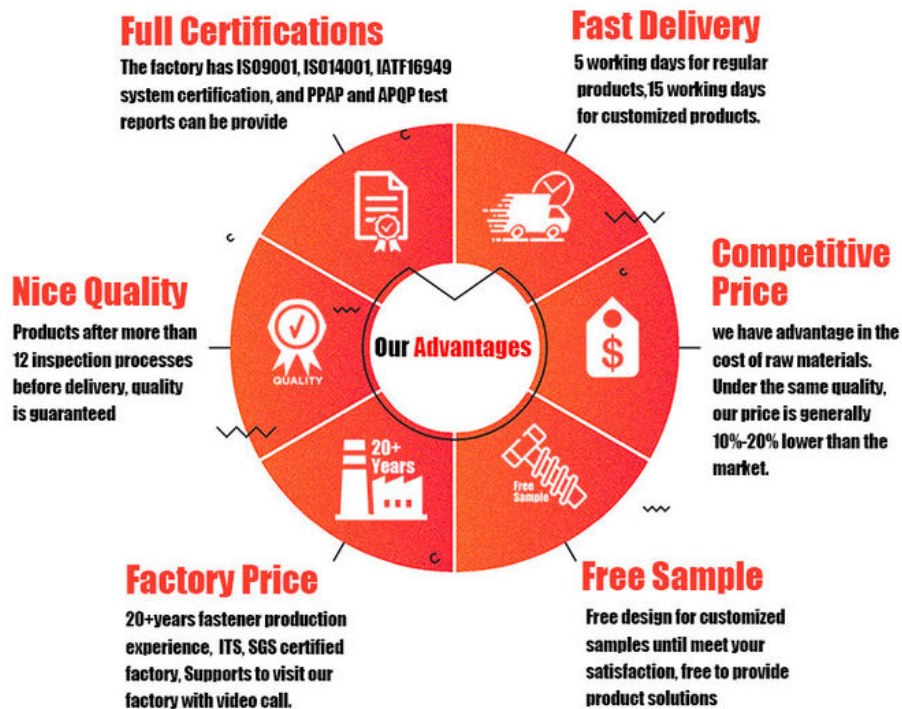
### More Images



## Product Description

Stainless Steel Shaft Retaining Washer Plain Finish with Connection Function

### FINEX | Fine and Express FASTENERS



Ensure secure and reliable shaft connections with our **Stainless Steel Shaft Retaining Washers**. Featuring a plain finish and designed for optimal functionality, these washers are perfect for applications where stability and durability are paramount. Made from high-quality stainless steel, they offer excellent corrosion resistance and long-lasting performance, making them ideal for industrial, automotive, and mechanical uses.

#### Key Features:

**High-Quality Stainless Steel:** Constructed from premium stainless steel, these washers are resistant to rust, corrosion, and wear, ensuring reliable performance in demanding environments.

**Plain Finish:** The plain, uncoated finish provides a clean and professional appearance while maintaining the washer's structural integrity.

**Connection Function:** Designed to securely retain shafts and prevent axial movement, these washers ensure stable and precise

connections in mechanical assemblies.

**Durable and Long-Lasting:** Built to withstand high stress, vibration, and temperature variations, making them suitable for heavy-duty applications.

**Wide Compatibility:** Available in various sizes to fit different shaft diameters, ensuring versatility across multiple projects.

#### Technical Specifications:

Material: Stainless steel (grade 304 or 316 available)

Finish: Plain (uncoated)

Temperature Range: [Insert specific range, e.g., -50°C to 300°C]

Sizes: Customizable (standard and non-standard sizes available)

Thickness: [Insert specific thickness options]

#### Why Choose Our Stainless Steel Shaft Retaining Washers?

**Corrosion Resistance:** Stainless steel construction ensures durability in harsh conditions.

**Secure Connection:** Prevents axial movement and maintains shaft alignment.

**Versatile Use:** Suitable for industrial, automotive, and mechanical applications.

**Customizable Sizes:** Available in various dimensions to meet your specific needs.

**Reliable Performance:** Designed to handle high stress and extreme environments.

**Applications:**

Securing shafts in industrial machinery and equipment

Automotive transmissions, engines, and braking systems

Mechanical assemblies requiring precise shaft alignment

Robotics, aerospace, and manufacturing applications

General-purpose use in DIY and repair projects

**Package Includes:**

Stainless Steel Shaft Retaining Washers (quantity as selected)

#### Customization Options:

We offer customized sizing and thickness to meet your unique project requirements. Contact us for more information on custom orders.

#### Order Now and Enhance Your Assemblies!

Upgrade your mechanical and industrial projects with our high-performance Stainless Steel Shaft Retaining Washers. Designed for professionals and DIY enthusiasts, these washers deliver unmatched reliability and durability. Add to cart today and enjoy fast shipping, competitive pricing, and exceptional customer service!

**FINEX | Fine and Express**  
**FASTENERS**    

[Click Here To Start Customizing](#)  
**Customizable Hole Shape**



**Pozi**



**Phillips**



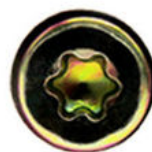
**Anti-theft  
Triangle**



**Slotted**



**Hex Socket**



**Torx**



**Torx-internal  
Tamber proof pin**



**H type  
anti theft**



**Tri-wing**



**Two-Hole  
Tamber proof**



**One way  
anti theft**



**Square Slot  
Combination**



**Phillips Slot  
Combination**



**Slot 6 Lobe  
Combination**



**Tri-wing internal  
Tamber proof pin**







**FINEX | Fine and Express**  
**FASTENERS**    

**OEM** **ODM**  
ORIGINAL ORIGINAL  
EQUIPMENT DESIGN  
MANUFACTURER MANUFACTURER

**What We Produce is Not Just a Screw. We Provide a Guarantee of Secure Fastening**



## Specification

### More Detail Informations

Available Material

- 1.Stainless Steel: SS303, SS304, SS316, SS410, SS420;
  - 2.Carbon steel: C1006,C1010,C1018,C1022,C1035K,C1045;
  - 3.Brass: C3602,C3604,Hpb59,Hpb62,Hpb65,Hpb58,Hpb70 ;
  - 4.Aluminum: Al6061, Al6063 etc
- or as your requirements

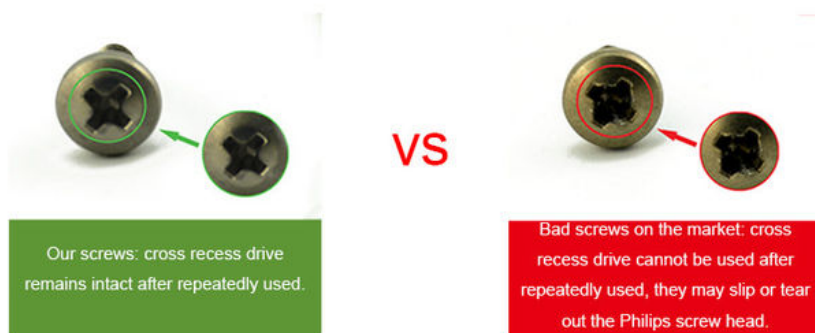
Head type

CSK Head,Pan Head,Truss Head,Hexagon Head,Round Head,Oval Head,Button Head,Cap Head,Cheese Head,etc.

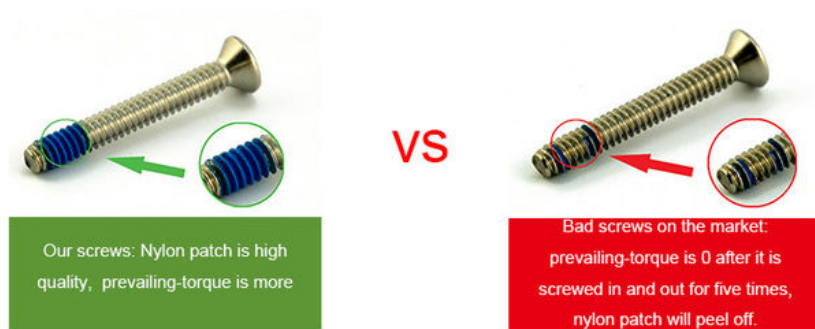
|                   |   |
|-------------------|---|
| Hardness          | Carbon Steel:HRC:28~35 ,HV450~700<br>Alloy Steel:HRC:32~39(grade10.9) HRC:39~44(grade12.9)  |
| Finish            | Zinc plated, Nickel plated, Bronze, Copper,Phosphate,<br>Oxidation black, Passivation, Tin, Dacromet, Gold, Chrome,<br>Silver,<br>Phosphorization,Zinc-nickel alloy plated etc. |
| Sample Available  | The sample is free of charge if we have the existing<br>tooling,you only need to pay for the freight cost   |
| Delivery time     | Samples time 3-5 working days, Lead time 20-25 working<br>days  |
| Pricing Term      | EXW Dongguan(FCA),FOB, CIF, CNF, DDU,etc.   |
| Packing           | Bulk in PE bag or Small boxes.then in carton .pallet  |
| Payment term      | TT (30% in advance as deposit, balance before delivery) ,<br>L/C, Western Union,PayPal etc  |
| Management system | ISO9001:2015  |
| Certificate       | ISO,ROHS  |

## Why Choose Us

### NO1.Drive compariason



### NO2.Torque comparison





### NO3.Screw Plating Comparison



Our screws: good finish, clear thread, even coating, bright appearance.

VS



Bad screws on the market: bad finish, uneven coating, thread is oxidized, the finish is blacked.

### NO4.Screw Material Comparison



Our screws: we use quality carbon steel material, Chemical Element content in Steel meets the requirement of ISO standard, they won't be broken after 90° bent, high strength, good toughness requirement of ISO

VS



Bad screws on the market: bad carbon steel material, Chemical Element content in Steel doesn't meet the requirement of ISO standard, they will be easily broken after 90° bent, high strength and bad toughness.

### NO5.Mechanical Properties comparison



Our self tapping screws: our screws have high strength, enough hardness, good toughness after heat treated, they won't be broken after bent.

VS



Bad screws on the market: they have high strength and bad toughness, thread will easily be broken, because the screws are not tempered.

### NO6. Corrosion Resistance Comparison of SUS304



Our SUS304 screws: nickel chemical element content won't be less than 8, meets ISO requirement. The finish won't be oxidized, rusted and has good anti-corrosion capacity standard, they won't be broken after 90° bent, high strength, good toughness.

VS



SUS304 screws on the market: nickel chemical element content will be less than 8, even doesn't have nickel plated, which doesn't meet ISO requirement. The finish will be oxidized, rusted and lose anti-corrosion capacity.

# FINEX

## — 20 YEARS

### Non-standard Fasteners Customization Experience

+86-13527934468

alianchen@finexfastener.com

#### Contact us



## Partners and Exhibitions







## FAQ

**Q1: What is your main products and material supply?**

**A1:** Our main products are Electronic screws, Sems screws, Tapping screws, Chicago screws, Shoulder screws etc. Special Non-standard studs, Turning parts and High-end precision complex CNC Machining parts etc.

**A2:** Carbon Steel, Alloy Steel, Aluminum alloy, Stainless Steel, Brass, Copper, Titanium alloy or according to your requirement.

**Q2: When can I get the price?**

**A:** We usually offer you a quotation within 12 hours, and the special offer is not more than 24 hours. Any urgent cases, please contact us directly by phone or send email to us.

**Q3: What about the transportation and delivery date?**

**A:** If the weight of goods more than 80kg, Normally we use shipment to transport the orders. It is about 20-30 days. If the weight of goods less than 80kg, or there are urgent, we can send the goods via air express, It is 3-5 days.

**Q4: What's your packing? What to do in case of damaged goods during transport?**

**A1:** Our Normal packing is bulking in Cartons, less than 20 kgs/carton, 48 cartons / pallet. We also can pack products according to your requirement.

**A2:** To avoid any subsequent trouble regarding quality issue, we suggest you check the goods once you receive them. If there is any transport damaged or quality issue, don't forget take the detail pictures and contact us as soon as possible, we will properly handle it to make sure your loss to reduce to the smallest.

**Q5: Can I get discounts?**

**A:** Yes, for big order, frequent customers, we give reasonable discounts.

Q6: Do you have enough capacity?

A: Our production equipment is a new imported equipment. We have a group of skilled workers who have been working for more than 10 years. Their production experience is very rich and their skills are very skilled. The screws can be 30 million pcs/month. We have sufficient funds to ensure the normal operation of the factory.



**Finexpress Precision Manufacturing (dongguan) Co., Ltd**



+86-13527934468



alianchen@finexfastener.com



metalscrewfastener.com

Building 2, No. 129 Xinmalian Xinma Road, Dalang Town, Dongguan, Guangdong, China