

## Cylindrical Head Half Threads Hexagon Socket Head Screws Black Zinc

### Our Product Introduction

#### Basic Information

- Place of Origin: Guangdong, China
- Brand Name: FinExpress
- Model Number: Hex Socket Head Cap Screws
- Minimum Order Quantity: 30000
- Price: \$0.05/pieces 1000-29999 pieces
- Packaging Details: 1.1000pcs / plastic bag,20kgs/ carton ,then put on the wood pallet ,  
2.Carton size:28cm\*18cm\*13cm,  
3.Wood pallet size:118cm\*113cm,Weight:700~800Kg  
Bulk:0.8 cubic  
4.The weight of 20 FT Container:20~25 Tons  
5,As your requirements
- Delivery Time: 7~15 Working Day
- Payment Terms: T/T, L/C
- Supply Ability: 500000000 Piece/Pieces per Week



#### Product Specification

- Finish: Plain, Black Oxide, ZINC PLATED
- Material: Stainless Steel, Steel
- Measurement System: INCH, Metric
- Head Style: Pan, Truss, Flat, HEX
- Standard: DIN, Non-standard
- Product Name: Hex Socket Head Cap Screws
- MOQ: 1 Piece In Stock, 30,000 Pcs Customized
- Package: Small Packing+Carton Packing+Pallet
- Delivery Time: In Stock 5~7 Working Days, Customized 15~25 Working Days
- Service: OEM ODM Custom Service
- Length: 1mm~500mm
- Certificate: ISO9001:2015, RoHs
- Highlight: Cylindrical Head Hexagon Socket Head Screws,  
Black Zinc Hexagon Socket Head Screws,  
Half Threads Hexagon Socket Screw



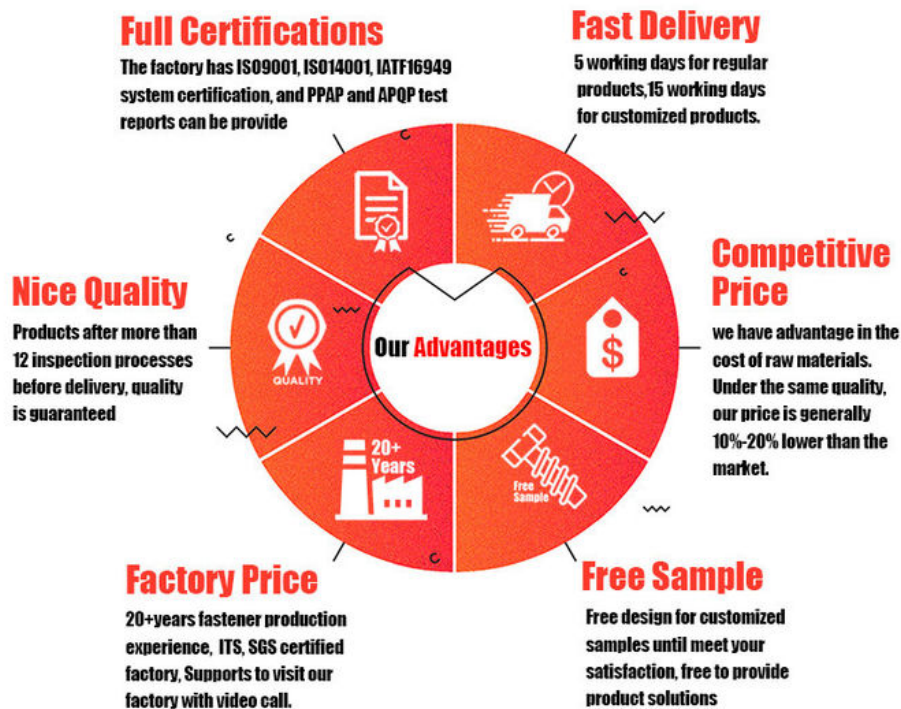
#### More Images



## Product Description

Cylindrical Head Half Threads Hexagon Socket Head Screws Black Zinc

### FINEX | Fine and Express FASTENERS



Our Cylindrical Head Half Threads Hexagon Socket Head Screws with black zinc finish feature a unique cylindrical head. This design offers a larger bearing surface compared to some other head types. When tightened, the cylindrical head distributes the load more evenly across the fastened material, reducing the risk of surface damage or deformation. It also provides a more aesthetically pleasing and streamlined appearance, making it suitable for applications where both functionality and visual appeal are important, such as in high - end furniture, electronics, and precision machinery.

## Strategic Half - Thread Configuration

The half - thread design of these screws is a well - thought - out feature. The threaded portion is precisely engineered to provide optimal grip and holding power where it's needed most. In applications where the screw needs to be inserted into a pre - drilled hole and then secure two or more components together, the half - thread allows for easy insertion and efficient engagement. The unthreaded shank portion, on the other hand, can help with alignment and provides additional stability to the connection. This configuration is especially useful in situations where the screw needs to pass through a clearance hole in one component before threading into another, ensuring a snug and secure fit.

## Ergonomic Hexagon Socket

The hexagon socket of these screws is designed for easy and precise operation. It provides a secure fit for hex - key tools, enabling users to apply torque accurately. This precision is crucial for preventing over - tightening or under - tightening, which can lead to component failure or loosening over time. Whether you're using a manual hex - key or a power - driven hex - bit, the socket design ensures a reliable connection between the tool and the screw. The hexagonal shape also allows for a more compact and efficient installation, especially in tight spaces where access might be limited.



## Durable Black Zinc Finish

The black zinc finish not only adds an attractive, sleek look to the screws but also offers enhanced protection. Zinc is known for its corrosion-resistant properties, and the black zinc coating provides an extra layer of defense against rust and oxidation. This makes the screws suitable for a variety of environments, from indoor applications where a certain level of moisture might be present to outdoor use in less-demanding weather conditions. The black color can also be beneficial in applications where a more discreet or aesthetically-matching appearance is desired, such as in black-finished metal structures or in some consumer products.

## High - Quality Manufacturing

Our screws are manufactured to the highest standards. We use premium-grade materials to ensure that the screws have the necessary strength and durability. The manufacturing process is carefully monitored to guarantee precise thread cutting, accurate head dimensions, and a consistent black zinc finish. Every screw undergoes rigorous quality control checks to ensure that it meets our strict specifications. This includes inspecting for any defects in the threading, head shape, or finish, as well as testing the mechanical properties of the screw to ensure it can withstand the intended loads.

## Versatile Applications

These screws are highly versatile and find applications in numerous industries. In the automotive industry, they can be used to fasten interior components, such as dashboard panels or seat frames, where the combination of a secure fit, aesthetic appearance, and corrosion resistance is important. In the electronics industry, they are suitable for assembling cases and securing circuit boards, thanks to their precision and the ability to provide a stable connection. In the construction of metal furniture, they offer a reliable fastening solution that can withstand the stresses of daily use while maintaining an attractive look. Additionally, they can be used in DIY projects, where their unique features make them a popular choice for creating custom-made fixtures and structures.

## Exceptional Customer Support

Our dedicated customer service team is here to assist you. Whether you have questions about the product's dimensions, compatibility with specific materials, or need advice on installation, we're just a message or call away. We pride ourselves on providing prompt and detailed responses to all inquiries, ensuring that you have the information you need to make informed decisions. From the moment you consider purchasing our Cylindrical Head Half Threads Hexagon Socket Head Screws Black Zinc to after-sales support, we strive to make your experience with our products as smooth and satisfactory as possible.

Choose our Cylindrical Head Half Threads Hexagon Socket Head Screws Black Zinc for your next fastening project and experience the perfect blend of functionality, durability, and style.



**Pozi**



**Phillips**



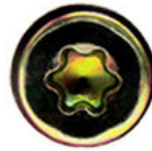
**Anti-theft  
Triangle**



**Slotted**



**Hex Socket**



**Torx**



**Torx-internal  
Tamber proof pin**



**H type  
anti theft**



**Tri-wing**



**Two-Hole  
Tamber proof**



**One way  
anti theft**



**Square Slot  
Combination**



**Phillips Slot  
Combination**



**Slot 6 Lobe  
Combination**



**Tri-wing internal  
Tamber proof pin**



**Blue Zinc**



**Yellow Zinc**



**White Zinc**



**Black Zinc**



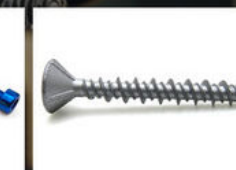
**Nickel Plated**



**Black Oxide**



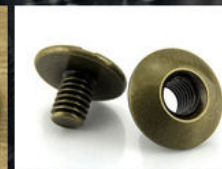
**Anodizing**



**Dacromet**



**Black  
Electrophoresis**



**Antique Bronze**



**Green**



**Baking Finish**





**What We Produce is Not Just a Screw. We Provide a Guarantee of Secure Fastening**

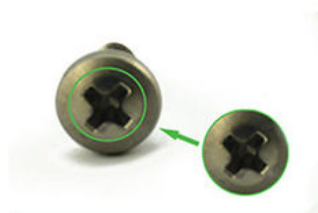


## Specification

	More Detail Informations
Available Material	1.Stainless Steel: SS303, SS304, SS316, SS410, SS420; 2. Carbon steel: C1006,C1010,C1018,C1022,C1035K,C1045; 3. Brass: C3602,C3604,Hpb59,Hpb62,Hpb65,Hpb58,Hpb70 ; 4. Aluminum: Al6061, Al6063 etc or as your requirements
Head type	CSK Head,Pan Head,Truss Head,Hexagon Head,Round Head,Oval Head,Button Head,Cap Head,Cheese Head,etc.
Hardness	Carbon Steel:HRC:28~35 ,HV450~700 Alloy Steel:HRC:32~39(grade10.9) HRC:39~44(grade12.9)
Finish	Zinc plated, Nickel plated, Bronze, Copper,Phosphate, Oxidation black, Passivation, Tin, Dacromet, Gold, Chrome, Silver, Phosphorization,Zinc-nickel alloy plated etc.
Sample Available	The sample is free of charge if we have the existing tooling,you only need to pay for the freight cost
Delivery time	Samples time 3-5 working days, Lead time 20-25 working days
Pricing Term	EXW Dongguan(FCA),FOB, CIF, CNF, DDU,etc.
Packing	Bulk in PE bag or Small boxes.then in carton .pallet
Payment term	TT (30% in advance as deposit, balance before delivery) , L/C, Western Union,PayPal etc
Management system	ISO9001:2015
Certificate	ISO,ROHS

## Why Choose Us

### NO1.Drive compariason



Our screws: cross recess drive remains intact after repeatedly used.

VS



Bad screws on the market: cross recess drive cannot be used after repeatedly used, they may slip or tear out the Philips screw head.

### NO2.Torque comparison



Our screws: Nylon patch is high quality, prevailing-torque is more

VS



Bad screws on the market: prevailing-torque is 0 after it is screwed in and out for five times, nylon patch will peel off.

### NO3.Screw Plating Comparison



Our screws: good finish, clear thread, even coating, bright appearance.

VS



Bad screws on the market: bad finish, uneven coating, thread is oxidized, the finish is blacked.

### NO4.Screw Material Comparison



Our screws: we use quality carbon steel material, Chemical Element content in Steel meets the requirement of ISO standard, they won't be broken after 90° bent, high strength, good toughness.requirement of ISO

VS



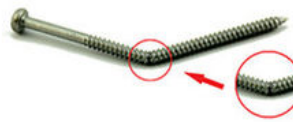
Bad screws on the market: bad carbon steel material, Chemical Element content in Steel doesn't meet the requirement of ISO standard, they will be easily broken after 90° bent, high strength and bad toughness.



## NO5.Mechanical Properties comparison



VS



Our self tapping screws: our screws have high strength, enough hardness, good toughness after heat treated, they won't be broken after bent.

Bad screws on the market: they have high strength and bad toughness, thread will easily be broken, because the screws are not tempered.

## NO6. Corrosion Resistance Comparison of SUS304



VS



Our SUS304 screws: nickel chemical element content won't be less than 8, meets ISO requirement. The finish won't be oxidized, rusted and has good anti-corrosion capacity. standard, they won't be broken after 90° bent, high strength, good toughness.

SUS304 screws on the market: nickel chemical element content will be less than 8, even doesn't have nickel plated, which doesn't meet ISO requirement. The finish will be oxidized, rusted and lose anti-corrosion capacity.

## Company Profile

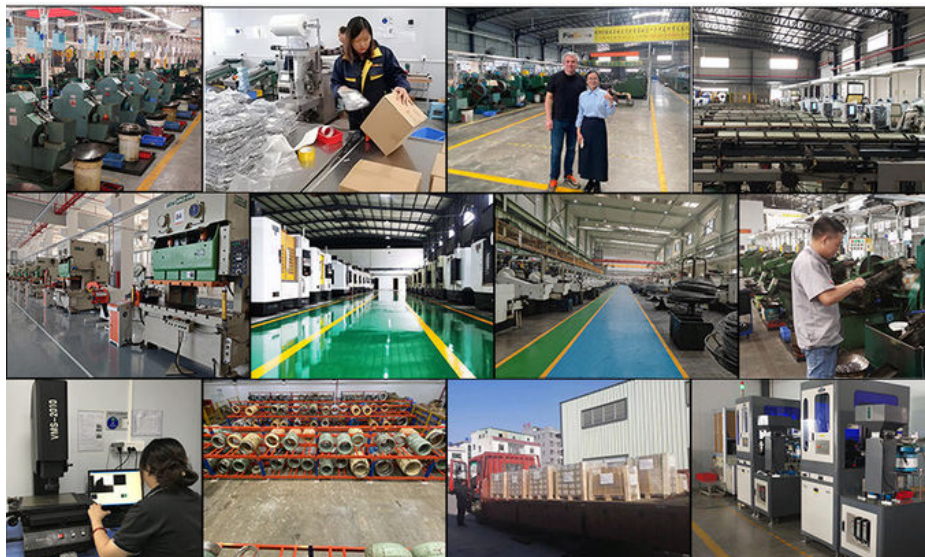
# FINEX

**20 YEARS**  
**Non-standard Fasteners**  
**Customization Experience**

+86-13527934468

alianchen@finexfastener.com

**Contact us**





## Partners and Exhibitions



**Raw Material (IQC)**



**Head Size (IPQC)**



**Thread Size (IPQC)**



**Spot check on surface treatment**



**Image Measuring Instrument**



**Hardness Test**



**ROHS Test**



**Salt Spray Test**



**Tensile Force Test**



**Touque Test**



**Screw Optical Screener**



**FQC by Manual Selection**

## FAQ

**Q1: What is your main products and material supply?**

**A1:** Our main products are Electronic screws, Sems screws, Tapping screws, Chicago screws, Shoulder screws etc. Special Non-standard studs, Turning parts and High-end precision complex CNC Machining parts etc.

A2: Carbon Steel, Alloy Steel, Aluminum alloy,Stainless Steel, Brass, Copper ,Titanium alloy or according to your requirement.

Q2: When can I get the price?

A: We usually offer you a quotation within 12 hours, and the special offer is not more than 24 hours.Any urgent cases, please contact us directly by phone or send email to us.

Q3: What about the transportation and delivery date?

A: If the weight of goods more than 80kg,Normally we use shipment to transprot the orders. It is about 20-30days . If the weight of goods less than 80kg,or there are urgent, we can send the goods via air express,It is 3~5 days.

Q4: What's your packing?What to do in case of damaged goods during transport?

A1: Our Normal packing is bulking in Cartons, less than 20 kgs/carton, 48 cartons / pallet. We also can pack products according to your requirement.

A2: To avoid any subsequent trouble regarding quality issue, we suggest you check the goods once you receive them. If there is any transport damaged or quality issue, don't forget take the detail pictures and contact us as soon as possible, we will properly handle it to make sure your loss to reduce to the smallest.

Q5: Can I get discounts?

A: Yes, for big order, frequent customers, we give reasonable discounts.

Q6: Do you have enough capacity?

A: Our production equipment is a new imported equipment. We have a group of skilled workers who have been working for more than 10 years. Their production experience is very rich and their skills are very skilled. The screws can be 30 million pcs/month. We have sufficient funds to ensure the normal operation of the factory.



**Finexpress Precision Manufacturing (dongguan) Co., Ltd**



+86-13527934468



alianchen@finexfastener.com



metalscrewfastener.com

Building 2, No. 129 Xinmalian Xinma Road, Dalang Town, Dongguan, Guangdong, China