

## Stainless Steel Hex Socket Head Cap Screw with Mechanical Dimensions Reliability Test

### Our Product Introduction

#### Basic Information

- Place of Origin: Guangdong, China, Guangdong, China (Mainland)
- Brand Name: FineExpress
- Model Number: SEMS Screw
- Minimum Order Quantity: 30000
- Price: \$0.10/pieces 1000-29999 pieces
- Packaging Details: 1.1000pcs / plastic bag,20kgs/ carton ,then put on the wood pallet ,  
2.Carton size:28cm\*18cm\*13cm,  
3.Wood pallet size:118cm\*113cm,Weight:700~800Kg  
Bulk:0.8 cubic  
4.The weight of 20 FT Container:20~25 Tons  
5,As your requirements
- Delivery Time: 7~15 Working Day
- Payment Terms: T/T, L/C, D/A, D/P
- Supply Ability: 500000000 Piece/Pieces per Week

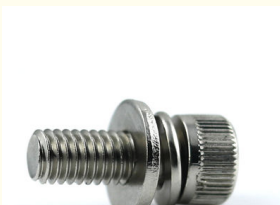


#### Product Specification

- Finish: Plain, Black Oxide, ZINC PLATED, Custom
- Material: Stainless Steel, Steel, Titanium
- Measurement System: INCH
- Head Style: HEX
- Standard: DIN
- Hardness: HV250~350
- Heat Treatment: No Hardening
- Function: Connection, Fastening
- Range Of Application: Cabinet, Sheet Metal, Motors. Building Decoration Etc.
- Sample: Available Free Within 7days
- Bulk Lead Time: In Stock 5~7 Working Days, Customized 15~25 Working Days
- Reliability Test: Mechanical Dimensions, Hardness Test. Salt Spray Endurance Test
- MOQ: 1 Piece In Stock, 30,000 Pcs Customized



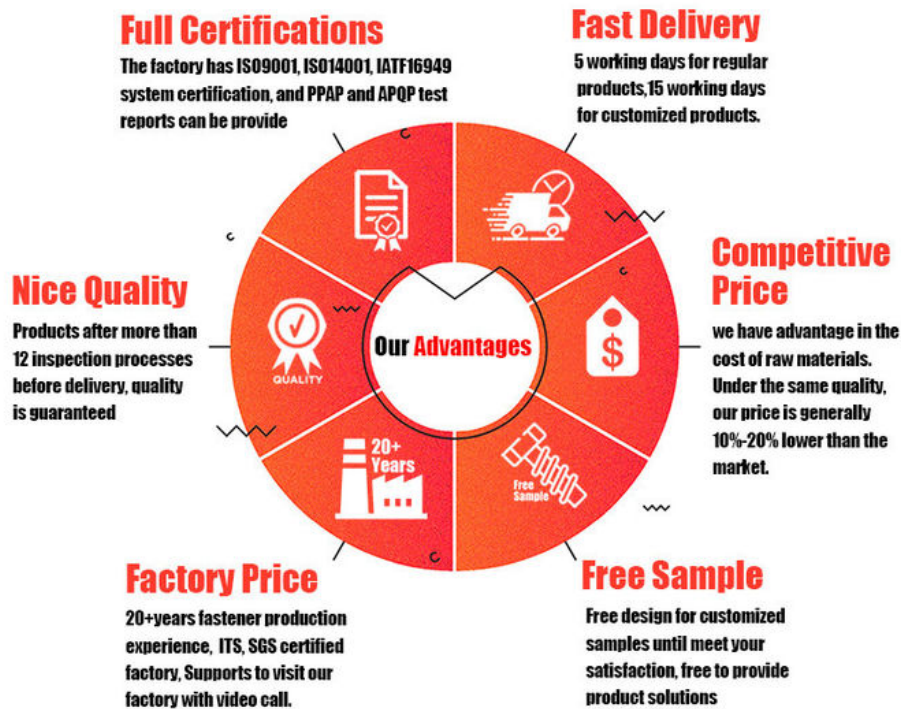
#### More Images



## Product Description

Stainless Steel Hex Socket Head Cap Screw with Mechanical Dimensions Reliability Test

**FINEX | Fine and Express  
FASTENERS**




Our Stainless Steel Hex Socket Head Cap Screws are crafted from top - notch stainless steel, renowned for its exceptional properties. Stainless steel offers remarkable corrosion resistance, making these screws suitable for a diverse range of environments. Whether used in humid industrial settings, outdoor structures exposed to the elements, or in applications where chemical resistance is crucial, the stainless - steel build ensures long - lasting durability. This corrosion resistance not only protects the screw from rust and degradation but also maintains the integrity of the fastened components, reducing the need for frequent replacements. Additionally, stainless steel provides high strength, enabling the screws to withstand substantial loads without deformation or breakage, making them reliable for various applications.

## Ergonomic Hex Socket Head Design

The hex socket head design of our cap screws is a key feature that combines functionality and ease - of - use. The hexagonal socket provides a secure fit for hex - key tools, allowing for precise torque application. This ensures that the screw can be tightened or loosened with accuracy, minimizing the risk of over - tightening or under - tightening, which can lead to component failure or loosening over time. The socket head also allows for a more compact and streamlined installation, making it ideal for applications where space is limited. The flat, cylindrical head of the cap screw provides a large bearing surface, distributing the load evenly when tightened, enhancing the stability of the connection.

## Mechanical Dimensions Precision

Precision in mechanical dimensions is a hallmark of our Stainless Steel Hex Socket Head Cap Screws. Every screw is manufactured to exacting standards, ensuring consistent thread pitch, diameter, and head dimensions. This precision is crucial for ensuring compatibility with other components. Whether used in machinery assembly, automotive applications, or construction projects, the accurate mechanical dimensions guarantee a seamless fit. The precise threading allows for smooth engagement, reducing the effort required for installation and



ensuring a tight, vibration - resistant connection. The consistency in head dimensions ensures that the screws can be easily identified and selected for specific applications, streamlining the assembly process.

## **Rigorous Mechanical Dimensions Reliability Test**

To ensure the highest level of performance, our hex socket head cap screws undergo a rigorous mechanical dimensions reliability test. This test assesses the durability and performance of the screw under various conditions. We subject the screws to simulated real - world stresses, including tensile forces, torque, and vibration. By conducting these tests, we can verify that the mechanical dimensions of the screws remain stable over time, even under extreme loads. This reliability testing ensures that our screws meet or exceed industry standards, providing you with the confidence that they will perform flawlessly in your applications. Only screws that pass these stringent tests are approved for sale, guaranteeing the quality and reliability of our products.

## **Versatile Applications**

These screws find extensive use across a wide range of industries. In the automotive industry, they are used to fasten engine components, transmission parts, and body panels, providing a secure and long - lasting connection. In the machinery manufacturing sector, they are essential for assembling complex machinery, ensuring the precise alignment and stability of components. In the construction industry, they are used to secure structural elements, such as beams and columns, providing the necessary strength and reliability. They are also popular in the electronics industry, where their corrosion resistance and precise dimensions make them suitable for securing circuit boards and enclosures.

## **Exceptional Quality Assurance**

Quality is at the heart of our manufacturing process. We source the highest - quality stainless - steel raw materials, ensuring they meet strict quality standards. The manufacturing process is closely monitored to ensure that each screw is produced with precision and consistency. In addition to the mechanical dimensions reliability test, we conduct thorough inspections at every stage of production to check for any defects, such as burrs, incorrect threading, or dimensional variations. This comprehensive quality assurance process ensures that you receive a product that is of the highest quality and will perform reliably in your applications.

## **Outstanding Customer Support**

Our dedicated customer service team is here to assist you at every step. Whether you have questions about the product's specifications, compatibility with specific components, or need advice on installation, we're just a message or call away. We pride ourselves on providing prompt and detailed responses to all inquiries, ensuring that you have the information you need to make informed decisions. From the moment you consider purchasing our screws to after - sales support, we strive to make your experience with our Stainless Steel Hex Socket Head Cap Screws as smooth and satisfactory as possible.

Choose our Stainless Steel Hex Socket Head Cap Screw with Mechanical Dimensions Reliability Test for your next project and experience the perfect blend of quality, reliability, and precision.



**Pozi**



**Phillips**



**Anti-theft  
Triangle**



**Slotted**



**Hex Socket**



**Torx**



**Torx-internal  
Tamber proof pin**



**H type  
anti theft**



**Tri-wing**



**Two-Hole  
Tamber proof**



**One way  
anti theft**



**Square Slot  
Combination**



**Phillips Slot  
Combination**



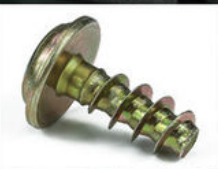
**Slot 6 Lobe  
Combination**



**Tri-wing internal  
Tamber proof pin**



**Blue Zinc**



**Yellow Zinc**



**White Zinc**



**Black Zinc**



**Nickel Plated**



**Black Oxide**



**Anodizing**



**Dacromet**



**Black  
Electrophoresis**



**Antique Bronze**



**Green**



**Baking Finish**





**What We Produce is Not Just a Screw. We Provide a Guarantee of Secure Fastening**

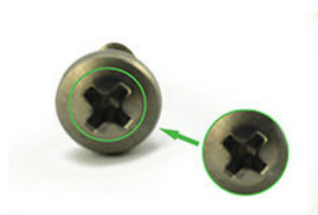


## Specification

	More Detail Informations
Available Material	1.Stainless Steel: SS303, SS304, SS316, SS410, SS420; 2.Carbon steel: C1006,C1010,C1018,C1022,C1035K,C1045; 3.Brass: C3602,C3604,Hpb59,Hpb62,Hpb65,Hpb58,Hpb70 ; 4.Aluminum: Al6061, Al6063 etc or as your requirements
Head type	CSK Head,Pan Head,Truss Head,Hexagon Head,Round Head,Oval Head,Button Head,Cap Head,Cheese Head,etc.
Hardness	Carbon Steel:HRC:28~35 ,HV450~700 Alloy Steel:HRC:32~39(grade10.9) HRC:39~44(grade12.9)
Finish	Zinc plated, Nickel plated, Bronze, Copper,Phosphate, Oxidation black, Passivation, Tin, Dacromet, Gold, Chrome, Silver, Phosphorization,Zinc-nickel alloy plated etc.
Sample Available	The sample is free of charge if we have the existing tooling,you only need to pay for the freight cost
Delivery time	Samples time 3-5 working days, Lead time 20-25 working days
Pricing Term	EXW Dongguan(FCA),FOB, CIF, CNF, DDU,etc.
Packing	Bulk in PE bag or Small boxes.then in carton .pallet
Payment term	TT (30% in advance as deposit, balance before delivery) , L/C, Western Union,PayPal etc
Management system	ISO9001:2015
Certificate	ISO,ROHS

## Why Choose Us

### NO1.Drive compariason



Our screws: cross recess drive remains intact after repeatedly used.

VS



Bad screws on the market: cross recess drive cannot be used after repeatedly used, they may slip or tear out the Philips screw head.

### NO2.Torque comparison



Our screws: Nylon patch is high quality, prevailing-torque is more

VS



Bad screws on the market: prevailing-torque is 0 after it is screwed in and out for five times, nylon patch will peel off.

### NO3.Screw Plating Comparison



Our screws: good finish, clear thread, even coating, bright appearance.

VS



Bad screws on the market: bad finish, uneven coating, thread is oxidized, the finish is blacked.

### NO4.Screw Material Comparison



Our screws: we use quality carbon steel material, Chemical Element content in Steel meets the requirement of ISO standard, they won't be broken after 90° bent, high strength, good toughness.requirement of ISO

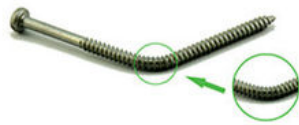
VS



Bad screws on the market: bad carbon steel material, Chemical Element content in Steel doesn't meet the requirement of ISO standard, they will be easily broken after 90° bent, high strength and bad toughness.



## NO5.Mechanical Properties comparison



Our self tapping screws: our screws have high strength, enough hardness, good toughness after heat treated, they won't be broken after bent.

VS



Bad screws on the market: they have high strength and bad toughness, thread will easily be broken, because the screws are not tempered.

## NO6. Corrosion Resistance Comparison of SUS304



Our SUS304 screws: nickel chemical element content won't be less than 8, meets ISO requirement. The finish won't be oxidized, rusted and has good anti-corrosion capacity. standard, they won't be broken after 90° bent, high strength, good toughness.

VS



SUS304 screws on the market: nickel chemical element content will be less than 8, even doesn't have nickel plated, which doesn't meet ISO requirement. The finish will be oxidized, rusted and lose anti-corrosion capacity.

## Company Profile

# FINEX

**20 YEARS**  
**Non-standard Fasteners**  
**Customization Experience**

+86-13527934468

alianchen@finexfastener.com

**Contact us**





## Partners and Exhibitions



**Raw Material (IQC)**



**Head Size (IPQC)**



**Thread Size (IPQC)**



**Spot check on surface treatment**



**Image Measuring Instrument**



**Hardness Test**



**ROHS Test**



**Salt Spray Test**



**Tensile Force Test**



**Touque Test**



**Screw Optical Screener**



**FQC by Manual Selection**

## FAQ

**Q1: What is your main products and material supply?**

**A1:** Our main products are Electronic screws, Sems screws, Tapping screws, Chicago screws, Shoulder screws etc. Special Non-standard studs, Turning parts and High-end precision complex CNC Machining parts etc.

A2: Carbon Steel, Alloy Steel, Aluminum alloy,Stainless Steel, Brass, Copper ,Titanium alloy or according to your requirement.

Q2: When can I get the price?

A: We usually offer you a quotation within 12 hours, and the special offer is not more than 24 hours.Any urgent cases, please contact us directly by phone or send email to us.

Q3: What about the transportation and delivery date?

A: If the weight of goods more than 80kg,Normally we use shipment to transprot the orders. It is about 20-30days . If the weight of goods less than 80kg,or there are urgent, we can send the goods via air express,It is 3~5 days.

Q4: What's your packing?What to do in case of damaged goods during transport?

A1: Our Normal packing is bulking in Cartons, less than 20 kgs/carton, 48 cartons / pallet. We also can pack products according to your requirement.

A2: To avoid any subsequent trouble regarding quality issue, we suggest you check the goods once you receive them. If there is any transport damaged or quality issue, don't forget take the detail pictures and contact us as soon as possible, we will properly handle it to make sure your loss to reduce to the smallest.

Q5: Can I get discounts?

A: Yes, for big order, frequent customers, we give reasonable discounts.

Q6: Do you have enough capacity?

A: Our production equipment is a new imported equipment. We have a group of skilled workers who have been working for more than 10 years. Their production experience is very rich and their skills are very skilled. The screws can be 30 million pcs/month. We have sufficient funds to ensure the normal operation of the factory.



**Finexpress Precision Manufacturing (dongguan) Co., Ltd**



+86-13527934468



alianchen@finexfastener.com



metalscrewfastener.com

Building 2, No. 129 Xinmalian Xinma Road, Dalang Town, Dongguan, Guangdong, China