

## White Zinc Plated Coated Head Blue Finish Countersunk Wood Lag Screws Confirmate Screw

### Our Product Introduction

#### Basic Information

- Place of Origin: Guangdong, China
- Brand Name: FinExpress
- Model Number: FinExpress Screw 0033
- Minimum Order Quantity: 30000
- Price: \$0.02/pieces >=500000 pieces
- Packaging Details: 1.1000pcs / plastic bag,20kgs/ carton ,then put on the wood pallet ,  
2.Carton size:28cm\*18cm\*13cm,  
3.Wood pallet size:118cm\*113cm,Weight:700~800Kg  
Bulk:0.8 cubic  
4.The weight of 20 FT Container:20~25 Tons  
5,As your requirements
- Delivery Time: 7~15 Working Day
- Payment Terms: T/T, L/C, D/A, D/P
- Supply Ability: 500000000 Piece/Pieces per Week

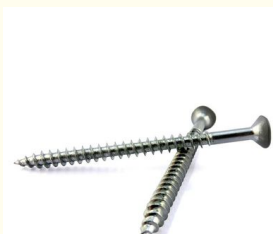


#### Product Specification

- Finish: Plain, ZINC PLATED, Custom
- Material: Stainless Steel, Steel
- Measurement System: INCH, Imperial (Inch)
- Head Style: Flat, Custom
- Standard: DIN
- Drive Type: Phillips/Pozi Drive/Torx
- Length: 16mm~180mm
- Delivery Time: In Stock 5~7 Working Days, Customized 15~25 Working Days
- Service: All Issues Will Be Noted Within 24hours
- Advantages: 12 Years Experience In Fastener Export
- Customized Support: OEM
- Application: Furniture/ Wood/Construction
- Color: Yellow/ White Blue
- Highlight: zinc plated self tapping screw ,



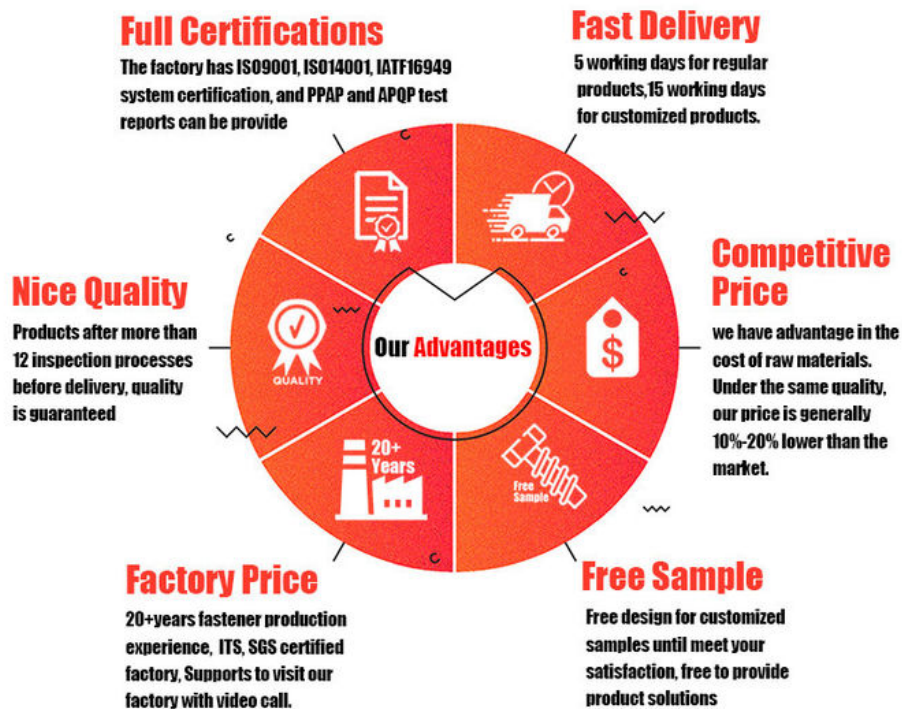
#### More Images



## Product Description

White Zinc Plated Coated Head Blue Finish Countersunk Wood Lag Screws Confirmate Screw

### FINEX | Fine and Express FASTENERS



## Product Overview

Elevate your woodworking projects with our White Zinc Plated & Blue Finish Countersunk Wood Lag Screws, combining industrial-grade durability with a distinctive aesthetic. Designed for heavy-duty furniture assembly, cabinetry, and structural wood connections, these screws feature a dual-layer white zinc and blue finish for corrosion resistance and visual appeal. The countersunk head ensures a flush finish, while the lag screw design provides superior grip and load-bearing capacity in hardwoods, softwoods, and engineered materials.

## Key Features

Dual-Layer Protective Coating

White Zinc Base Layer: Provides foundational rust resistance for indoor and humid environments.

Blue Finish Overlay: Adds a vibrant, UV-resistant topcoat for aesthetic customization (RAL/Pantone color matching available).

Countersunk Head Design

Flush Installation: Sits seamlessly with wood surfaces for a professional, splinter-free finish.

Wide Bearing Surface: Distributes pressure to prevent material splitting.

Lag Screw Performance

Self-Tapping Tip (Type 17): Sharp, winged drill point eliminates pre-drilling in most woods.

Coarse Threads: Deep, aggressive grip for high pull-out strength in structural joints.

Confirmat-Style Compatibility

Furniture Assembly: Optimized for European-style cabinet connectors and flat-pack furniture systems.

Hex Drive (6mm–10mm): Compatible with standard hex keys or impact drivers for high torque.

Certified Durability

ROHS, REACH, DIN 571: Compliant with international safety and performance standards.

Salt-Spray Tested: 500+ hours (ASTM B117) for coastal or humid environments.

**FINEX** | Fine and Express  
**FASTENERS**



[Click Here To Start Customizing](#)  
**Customizable Hole Shape**

				
<b>Pozi</b>	<b>Phillips</b>	<b>Anti-theft Triangle</b>	<b>Slotted</b>	<b>Hex Socket</b>
				
<b>Torx</b>	<b>Torx-internal Tamper proof pin</b>	<b>H type anti theft</b>	<b>Tri-wing</b>	<b>Two-Hole Tamper proof</b>
				
<b>One way anti theft</b>	<b>Square Slot Combination</b>	<b>Phillips Slot Combination</b>	<b>Slot 6 Lobe Combination</b>	<b>Tri-wing internal Tamper proof pin</b>







**FINEX | Fine and Express**  
**FASTENERS**    

**OEM** **ODM**  
ORIGINAL ORIGINAL  
EQUIPMENT DESIGN  
MANUFACTURER MANUFACTURER

**What We Produce is Not Just a Screw. We Provide a Guarantee of Secure Fastening**



## Specification

### More Detail Informations

#### Available Material

- 1.Stainless Steel: SS303, SS304, SS316, SS410, SS420;
- 2.Carbon steel: C1006,C1010,C1018,C1022,C1035K,C1045;
- 3.Brass: C3602,C3604,Hpb59,Hpb62,Hpb65,Hpb58,Hpb70 ;
- 4.Aluminum: Al6061, Al6063 etc  
or as your requirements

Head type	CSK Head,Pan Head,Truss Head,Hexagon Head,Round Head,Oval Head,Button Head,Cap Head,Cheese Head,etc.
Hardness	Carbon Steel:HRC:28~35 ,HV450~700 Alloy Steel:HRC:32~39(grade10.9) HRC:39~44(grade12.9)
Finish	Zinc plated, Nickel plated, Bronze, Copper,Phosphate, Oxidation black, Passivation, Tin, Dacromet, Gold, Chrome, Silver, Phosphorization,Zinc-nickel alloy plated etc.
Sample Available	The sample is free of charge if we have the existing tooling,you only need to pay for the freight cost
Delivery time	Samples time 3-5 working days, Lead time 20-25 working days
Pricing Term	EXW Dongguan(FCA),FOB, CIF, CNF, DDU,etc.
Packing	Bulk in PE bag or Small boxes.then in carton .pallet
Payment term	TT (30% in advance as deposit, balance before delivery) , L/C, Western Union,PayPal etc
Management system	ISO9001:2015
Certificate	ISO,ROHS

## Why Choose Us

### Why Choose Us?

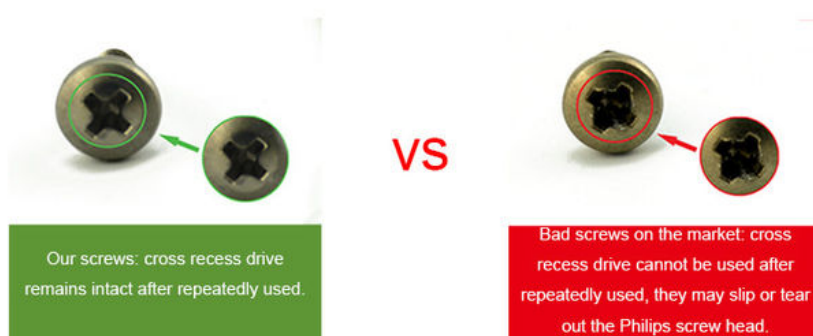
**OEM/ODM Support:** Full custom packaging, branding, and documentation.

**Quality Assurance:** ISO 9001-certified with full material traceability and testing (salt-spray, torque, tensile).

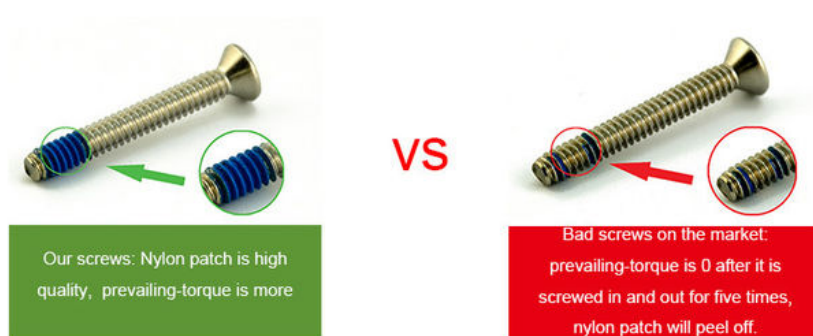
**Flexible MOQs:** Prototype batches to large-scale production.

**Fast Turnaround:** 10–15 days for standard orders; expedited options available.

#### NO1.Drive compariason



#### NO2.Torque comparison





### NO3.Screw Plating Comparison



Our screws: good finish, clear thread, even coating, bright appearance.

VS



Bad screws on the market: bad finish, uneven coating, thread is oxidized, the finish is blacked.

### NO4.Screw Material Comparison



Our screws: we use quality carbon steel material, Chemical Element content in Steel meets the requirement of ISO standard, they won't be broken after 90° bent, high strength, good toughness requirement of ISO

VS



Bad screws on the market: bad carbon steel material, Chemical Element content in Steel doesn't meet the requirement of ISO standard, they will be easily broken after 90° bent, high strength and bad toughness.

### NO5.Mechanical Properties comparison



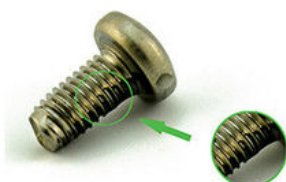
Our self tapping screws: our screws have high strength, enough hardness, good toughness after heat treated, they won't be broken after bent.

VS



Bad screws on the market: they have high strength and bad toughness, thread will easily be broken, because the screws are not tempered.

### NO6. Corrosion Resistance Comparison of SUS304



Our SUS304 screws: nickel chemical element content won't be less than 8, meets ISO requirement. The finish won't be oxidized, rusted and has good anti-corrosion capacity standard, they won't be broken after 90° bent, high strength, good toughness.

VS



SUS304 screws on the market: nickel chemical element content will be less than 8, even doesn't have nickel plated, which doesn't meet ISO requirement. The finish will be oxidized, rusted and lose anti-corrosion capacity.

# FINEX

## — 20 YEARS

### Non-standard Fasteners Customization Experience

+86-13527934468

alianchen@finexfastener.com

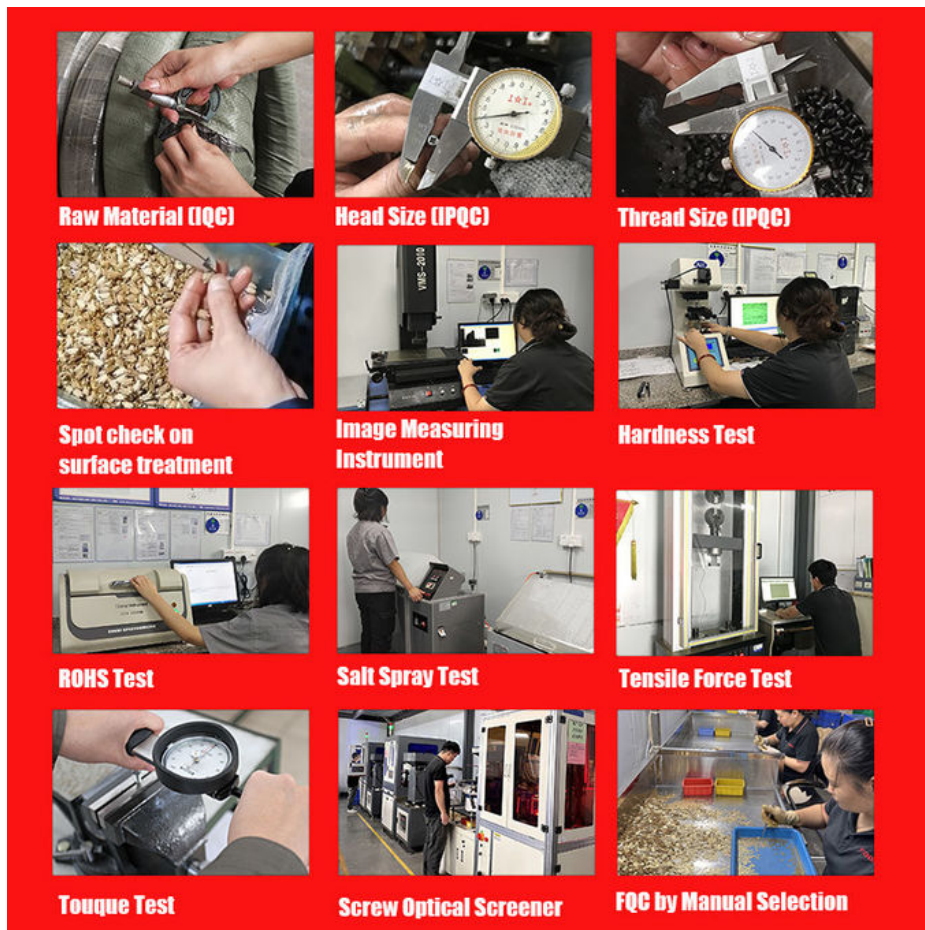
#### Contact us



### Partners and Exhibitions







## FAQ

**Q1: What is your main products and material supply?**

**A1:** Our main products are Electronic screws, Sems screws, Tapping screws, Chicago screws, Shoulder screws etc. Special Non-standard studs, Turning parts and High-end precision complex CNC Machining parts etc.

**A2:** Carbon Steel, Alloy Steel, Aluminum alloy, Stainless Steel, Brass, Copper, Titanium alloy or according to your requirement.

**Q2: When can I get the price?**

**A:** We usually offer you a quotation within 12 hours, and the special offer is not more than 24 hours. Any urgent cases, please contact us directly by phone or send email to us.

**Q3: What about the transportation and delivery date?**

**A:** If the weight of goods more than 80kg, Normally we use shipment to transport the orders. It is about 20-30 days. If the weight of goods less than 80kg, or there are urgent, we can send the goods via air express, It is 3~5 days.

**Q4: What's your packing? What to do in case of damaged goods during transport?**

**A1:** Our Normal packing is bulking in Cartons, less than 20 kgs/carton, 48 cartons / pallet. We also can pack products according to your requirement.

**A2:** To avoid any subsequent trouble regarding quality issue, we suggest you check the goods once you receive them. If there is any transport damaged or quality issue, don't forget take the detail pictures and contact us as soon as possible, we will properly handle it to make sure your loss to reduce to the smallest.

**Q5: Can I get discounts?**

**A:** Yes, for big order, frequent customers, we give reasonable discounts.

Q6: Do you have enough capacity?

A: Our production equipment is a new imported equipment. We have a group of skilled workers who have been working for more than 10 years. Their production experience is very rich and their skills are very skilled. The screws can be 30 million pcs/month. We have sufficient funds to ensure the normal operation of the factory.



**Finexpress Precision Manufacturing (dongguan) Co., Ltd**



+86-13527934468



alianchen@finexfastener.com



metalscrewfastener.com

Building 2, No. 129 Xinmalian Xinma Road, Dalang Town, Dongguan, Guangdong, China