

Customizable Blind Threaded Self Locking Insert For Plastic Furniture

Our Product Introduction

for more products please visit us on metalscrewfastener.com

Basic Information

- Place of Origin: Guangdong, China
- Brand Name: FinExpress
- Model Number: Brass insert nut
- Minimum Order Quantity: 50000
- Price: \$0.05/pieces 1000-9999 pieces
- Packaging Details: 1.1000pcs / plastic bag,20kgs/ carton ,then put on the wood pallet ,
2.Carton size:28cm*18cm*13cm,
3.Wood pallet size:118cm*113cm,Weight:700~800Kg
Bulk:0.8 cubic
4.The weight of 20 FT Container:20~25 Tons
5,As your requirements
- Supply Ability: 500000000 Piece/Pieces per Week



Product Specification

- Finish: Custom
- Measurement System: Metric
- Application: Plastic
- Standard: Non-standard
- Product Name: Brass Thread Inserts Nut For Plastic
- MOQ: 1 Piece In Stock, 30,000 Pcs Customized
- Package: Small Packing+Carton Packing+Pallet
- Delivery Time: In Stock 5~7 Working Days, Customized 15~25 Working Days
- Service: OEM ODM Custom Service
- Certificate: ISO9001:2015, RoHs
- Port: Shenzhen, Guangzhou
- Highlight: Customizable Self Locking Thread Inserts ,
Blind Threaded Self Locking Inserts ,
Customizable Blind Threaded Insert

FinEx®



More Images

FinEx®



FinEx®



FinEx®



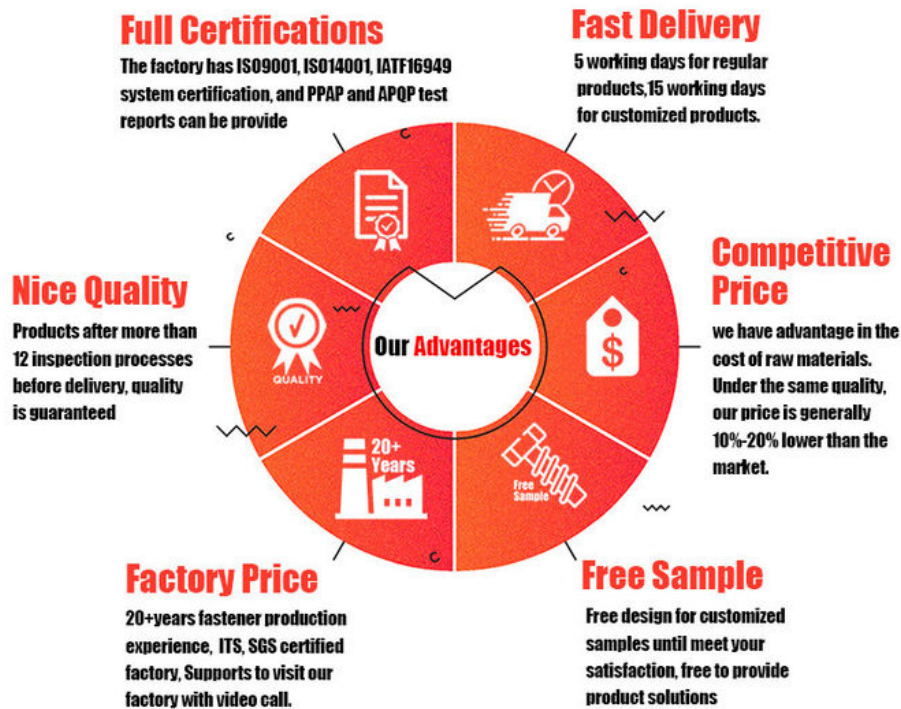
FinEx®



Product Description

Customizable Blind Threaded Self Locking Insert For Plastic Furniture

FINEX | Fine and Express FASTENERS



Product Overview

Transform your plastic furniture assembly with our **Customizable Blind Threaded Self-Locking Inserts**, engineered to create permanent, high-strength threads in plastic materials. Designed for one-sided installation, these inserts feature a self-locking mechanism to prevent loosening under vibration, ensuring reliable performance in modular furniture, outdoor settings, and industrial applications. Crafted from corrosion-resistant materials and fully customizable, they provide a reusable, stripped-proof solution for demanding environments.

Key Features

Self-Locking Design

Integrated locking ribs or knurled exterior grip the plastic material securely, resisting rotation and pull-out even under dynamic loads.

Blind Installation

Install from one side without backside access—ideal for hollow or capped plastic furniture components.

Corrosion-Resistant Materials

Choose from brass, stainless steel, or nylon inserts to match environmental needs (indoor, outdoor, marine).

Customizable Specifications

Tailor inserts to your project:

Thread Size: M4–M12 (metric) or UNC/UNF imperial.

Length: 8mm–40mm (custom lengths up to 60mm).

Head Style: Flush, countersunk, or flanged.

Easy Installation

Heat-setting (for thermoplastics) or press-fit installation with standard tools—no adhesives required.

ROHS & REACH Compliance

Safe for consumer products and compliant with global environmental standards.

Technical Specifications

Material: Brass (C36000), Stainless Steel (304/316), or Glass-Filled Nylon

Thread Standards: ISO, DIN, ANSI (Custom Threads Available)

Installation Method: Heat-Set (Plastic), Press-Fit, or Ultrasonic

Temperature Resistance:

Brass/Stainless Steel: -40°F to 600°F (-40°C to 316°C)

Nylon: -40°F to 250°F (-40°C to 121°C)

Torque Capacity: Up to 15 Nm (Material-Dependent)

Certifications: ROHS, ISO 9001, ASTM D4101



Pozi



Phillips



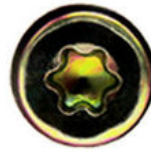
**Anti-theft
Triangle**



Slotted



Hex Socket



Torx



**Torx-internal
Tamper proof pin**



**H type
anti theft**



Tri-wing



**Two-Hole
Tamper proof**



**One way
anti theft**



**Square Slot
Combination**



**Phillips Slot
Combination**



**Slot 6 Lobe
Combination**



**Tri-wing internal
Tamper proof pin**



Blue Zinc



Yellow Zinc



White Zinc



Black Zinc



Nickel Plated



Black Oxide



Anodizing



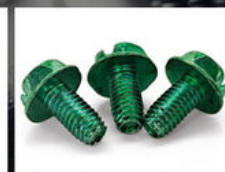
Dacromet



**Black
Electrophoresis**



Antique Bronze



Green



Baking Finish



What We Produce is Not Just a Screw. We Provide a Guarantee of Secure Fastening

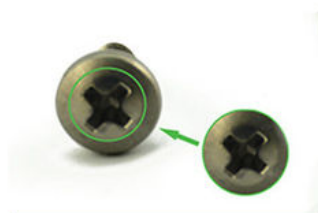


Specification

	More Detail Informations
Available Material	1.Stainless Steel: SS303, SS304, SS316, SS410, SS420; 2.Carbon steel: C1006,C1010,C1018,C1022,C1035K,C1045; 3.Brass: C3602,C3604,Hpb59,Hpb62,Hpb65,Hpb58,Hpb70 ; 4.Aluminum: Al6061, Al6063 etc or as your requirements
Head type	CSK Head,Pan Head,Truss Head,Hexagon Head,Round Head,Oval Head,Button Head,Cap Head,Cheese Head,etc.
Hardness	Carbon Steel:HRC:28~35 ,HV450~700 Alloy Steel:HRC:32~39(grade10.9) HRC:39~44(grade12.9)
Finish	Zinc plated, Nickel plated, Bronze, Copper,Phosphate, Oxidation black, Passivation, Tin, Dacromet, Gold, Chrome, Silver, Phosphorization,Zinc-nickel alloy plated etc.
Sample Available	The sample is free of charge if we have the existing tooling,you only need to pay for the freight cost
Delivery time	Samples time 3-5 working days, Lead time 20-25 working days
Pricing Term	EXW Dongguan(FCA),FOB, CIF, CNF, DDU,etc.
Packing	Bulk in PE bag or Small boxes.then in carton .pallet
Payment term	TT (30% in advance as deposit, balance before delivery) , L/C, Western Union,PayPal etc
Management system	ISO9001:2015
Certificate	ISO,ROHS

Why Choose Us

NO1.Drive compariason



Our screws: cross recess drive remains intact after repeatedly used.

VS



Bad screws on the market: cross recess drive cannot be used after repeatedly used, they may slip or tear out the Philips screw head.

NO2.Torque comparison



Our screws: Nylon patch is high quality, prevailing-torque is more

VS



Bad screws on the market: prevailing-torque is 0 after it is screwed in and out for five times, nylon patch will peel off.

NO3.Screw Plating Comparison



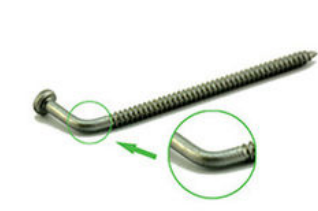
Our screws: good finish, clear thread, even coating, bright appearance.

VS



Bad screws on the market: bad finish, uneven coating, thread is oxidized, the finish is blacked.

NO4.Screw Material Comparison



Our screws: we use quality carbon steel material, Chemical Element content in Steel meets the requirement of ISO standard, they won't be broken after 90° bent, high strength, good toughness.requirement of ISO

VS



Bad screws on the market: bad carbon steel material, Chemical Element content in Steel doesn't meet the requirement of ISO standard, they will be easily broken after 90° bent, high strength and bad toughness.

NO5.Mechanical Properties comparison



Our self tapping screws: our screws have high strength, enough hardness, good toughness after heat treated, they won't be broken after bent.

VS



Bad screws on the market: they have high strength and bad toughness, thread will easily be broken, because the screws are not tempered.

NO6. Corrosion Resistance Comparison of SUS304



Our SUS304 screws: nickel chemical element content won't be less than 8, meets ISO requirement. The finish won't be oxidized, rusted and has good anti-corrosion capacity. standard, they won't be broken after 90° bent, high strength, good toughness.

VS



SUS304 screws on the market: nickel chemical element content will be less than 8, even doesn't have nickel plated, which doesn't meet ISO requirement. The finish will be oxidized, rusted and lose anti-corrosion capacity.

Company Profile

FINEX

20 YEARS
Non-standard Fasteners
Customization Experience

+86-13527934468

alianchen@finexfastener.com

Contact us



Partners and Exhibitions



Raw Material (IQC)



Head Size (IPQC)



Thread Size (IPQC)



Spot check on surface treatment



Image Measuring Instrument



Hardness Test



ROHS Test



Salt Spray Test



Tensile Force Test



Touque Test



Screw Optical Screener



FQC by Manual Selection

FAQ

Q1: What is your main products and material supply?

A1: Our main products are Electronic screws, Sems screws, Tapping screws, Chicago screws, Shoulder screws etc. Special Non-standard studs, Turning parts and High-end precision complex CNC Machining parts etc.

A2: Carbon Steel, Alloy Steel, Aluminum alloy,Stainless Steel, Brass, Copper ,Titanium alloy or according to your requirement.

Q2: When can I get the price?

A: We usually offer you a quotation within 12 hours, and the special offer is not more than 24 hours.Any urgent cases, please contact us directly by phone or send email to us.

Q3: What about the transportation and delivery date?

A: If the weight of goods more than 80kg,Normally we use shipment to transprot the orders. It is about 20-30days . If the weight of goods less than 80kg,or there are urgent, we can send the goods via air express,It is 3~5 days.

Q4: What's your packing?What to do in case of damaged goods during transport?

A1: Our Normal packing is bulking in Cartons, less than 20 kgs/carton, 48 cartons / pallet. We also can pack products according to your requirement.

A2: To avoid any subsequent trouble regarding quality issue, we suggest you check the goods once you receive them. If there is any transport damaged or quality issue, don't forget take the detail pictures and contact us as soon as possible, we will properly handle it to make sure your loss to reduce to the smallest.

Q5: Can I get discounts?

A: Yes, for big order, frequent customers, we give reasonable discounts.

Q6: Do you have enough capacity?

A: Our production equipment is a new imported equipment. We have a group of skilled workers who have been working for more than 10 years. Their production experience is very rich and their skills are very skilled. The screws can be 30 million pcs/month. We have sufficient funds to ensure the normal operation of the factory.



Finexpress Precision Manufacturing (dongguan) Co., Ltd



+86-13527934468



alianchen@finexfastener.com



metalscrewfastener.com

Building 2, No. 129 Xinmalian Xinma Road, Dalang Town, Dongguan, Guangdong, China