

## Double Straight Knurled Brass Threaded Insert High Accuracy Brass Screw Inserts

### Our Product Introduction

#### Basic Information

- Place of Origin: Guangdong, China
- Brand Name: FinExpress
- Model Number: Brass insert nut
- Minimum Order Quantity: 50000
- Price: \$0.05/pieces 1000-9999 pieces
- Packaging Details: 1.1000pcs / plastic bag,20kgs/ carton ,then put on the wood pallet ,  
2.Carton size:28cm\*18cm\*13cm,  
3.Wood pallet size:118cm\*113cm,Weight:700~800Kg  
Bulk:0.8 cubic  
4.The weight of 20 FT Container:20~25 Tons  
5,As your requirements
- Delivery Time: 7~15 Working Day
- Payment Terms: T/T, L/C, D/A, D/P
- Supply Ability: 500000000 Piece/Pieces per Week

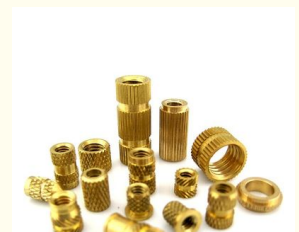


#### Product Specification

- Finish: Custom
- Measurement System: Metric, Imperial (Inch)
- Application: Plastic
- Standard: Non-standard
- Product Name: Brass Thread Inserts Nut For Plastic
- MOQ: 1 Piece In Stock, 30,000 Pcs Customized
- Package: Small Packing+Carton Packing+Pallet
- Delivery Time: In Stock 5~7 Working Days, Customized 15~25 Working Days
- Service: OEM ODM Custom Service
- Certificate: ISO9001:2015, RoHs
- Highlight: **Double Straight Knurled Brass Threaded Insert, High Accuracy Brass Screw Inserts, High Accuracy Brass Inserts For Plastic**



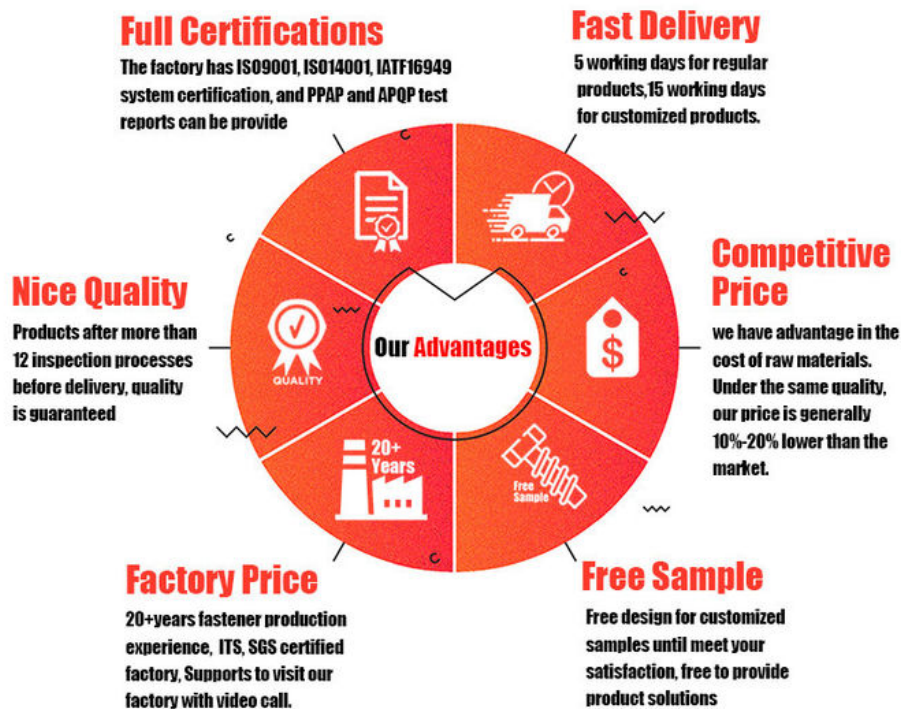
#### More Images



## Product Description

Double Straight Knurled Brass Threaded Insert High Accuracy Brass Screw Inserts

### FINEX | Fine and Express FASTENERS



## Product Overview

Our Double Straight Knurled Brass Threaded Inserts are engineered for applications demanding precision, durability, and secure fastening. Featuring dual straight knurling for superior grip, high-quality brass construction, and CNC-machined accuracy, these inserts provide reliable threaded connections in plastics, composites, and soft metals. Ideal for industries requiring repeatable assembly/disassembly without thread wear, such as aerospace, automotive, and electronics.

## Key Features

Double Straight Knurled Design

360° Grip: Dual knurling bands maximize surface contact for anti-rotation and anti-pullout performance.

Material Compatibility: Securely embeds into plastics (ABS, Nylon, POM), wood, and soft alloys.

High-Accuracy Brass Construction

Material: C36000 Free-Cutting Brass (RoHS/REACH compliant).

Precision Threads: CNC-machined internal threads (Class 6G tolerance) ensure smooth screw engagement.

#### Customizable Specifications

Thread Sizes: Metric (M3–M12) or imperial (#4-40 to ½"-13 UNC).

Length & Diameter: 6mm–30mm length, 5mm–15mm outer diameter (custom sizes available).

Finishes: Natural brass, nickel plating, or passivated for corrosion resistance.

#### Certified Performance

ISO 9001 & AS9100 (aerospace) compliance for quality assurance.

Salt-Spray Tested: 500+ hours (ASTM B117) for corrosion resistance.

**FINEX | Fine and Express**  
**FASTENERS**    

[Click Here To Start Customizing](#)  
**Customizable Hole Shape**



**Pozi**



**Phillips**



**Anti-theft  
Triangle**



**Slotted**



**Hex Socket**



**Torx**



**Torx-Internal  
Tamber proof pin**



**H type  
anti theft**



**Tri-wing**



**Two-Hole  
Tamber proof**



**One way  
anti theft**



**Square Slot  
Combination**



**Phillips Slot  
Combination**



**Slot 6 Lobe  
Combination**



**Tri-wing internal  
Tamber proof pin**





**FINEX | Fine and Express**  
**FASTENERS**    

**OEM** **ODM**  
ORIGINAL ORIGINAL  
EQUIPMENT DESIGN  
MANUFACTURER MANUFACTURER

**What We Produce is Not Just a Screw. We Provide a Guarantee of Secure Fastening**



## Specification

### More Detail Informations

#### Available Material

- 1.Stainless Steel: SS303, SS304, SS316, SS410, SS420;
- 2.Carbon steel: C1006,C1010,C1018,C1022,C1035K,C1045;
- 3.Brass: C3602,C3604,Hpb59,Hpb62,Hpb65,Hpb58,Hpb70 ;
- 4.Aluminum: Al6061, Al6063 etc  
or as your requirements

Head type	CSK Head,Pan Head,Truss Head,Hexagon Head,Round Head,Oval Head,Button Head,Cap Head,Cheese Head,etc.
Hardness	Carbon Steel:HRC:28~35 ,HV450~700 Alloy Steel:HRC:32~39(grade10.9) HRC:39~44(grade12.9)
Finish	Zinc plated, Nickel plated, Bronze, Copper,Phosphate, Oxidation black, Passivation, Tin, Dacromet, Gold, Chrome, Silver, Phosphorization,Zinc-nickel alloy plated etc.
Sample Available	The sample is free of charge if we have the existing tooling,you only need to pay for the freight cost
Delivery time	Samples time 3-5 working days, Lead time 20-25 working days
Pricing Term	EXW Dongguan(FCA),FOB, CIF, CNF, DDU,etc.
Packing	Bulk in PE bag or Small boxes.then in carton .pallet
Payment term	TT (30% in advance as deposit, balance before delivery) , L/C, Western Union,PayPal etc
Management system	ISO9001:2015
Certificate	ISO,ROHS

## Why Choose Us

### Why Choose Us?

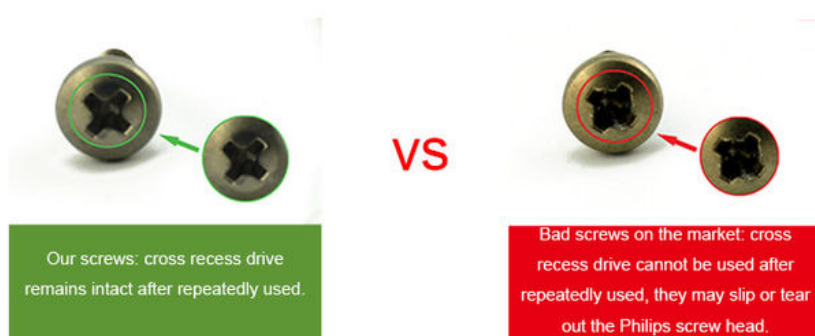
**OEM/ODM Support:** Full custom packaging, branding, and documentation.

**Quality Assurance:** ISO 9001-certified with full material traceability and testing (salt-spray, torque, tensile).

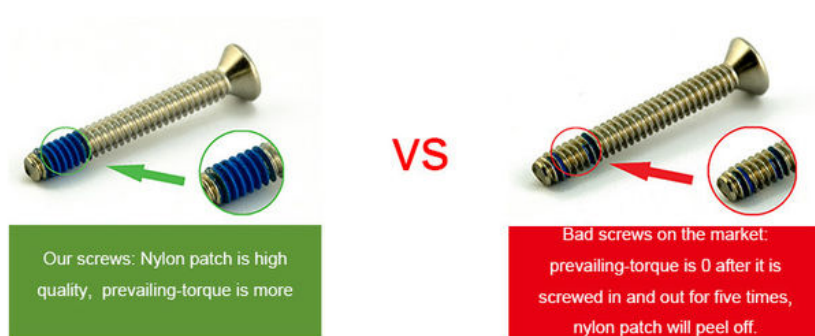
**Flexible MOQs:** Prototype batches to large-scale production.

**Fast Turnaround:** 10–15 days for standard orders; expedited options available.

#### NO1.Drive compariason



#### NO2.Torque comparison



### NO3.Screw Plating Comparison



Our screws: good finish, clear thread, even coating, bright appearance.

VS



Bad screws on the market: bad finish, uneven coating, thread is oxidized, the finish is blacked.

### NO4.Screw Material Comparison



Our screws: we use quality carbon steel material, Chemical Element content in Steel meets the requirement of ISO standard, they won't be broken after 90° bent, high strength, good toughness requirement of ISO

VS



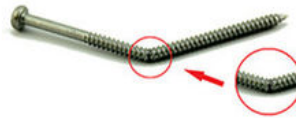
Bad screws on the market: bad carbon steel material, Chemical Element content in Steel doesn't meet the requirement of ISO standard, they will be easily broken after 90° bent, high strength and bad toughness.

### NO5.Mechanical Properties comparison



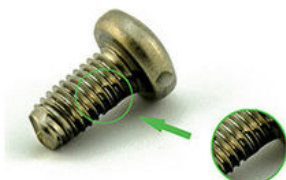
Our self tapping screws: our screws have high strength, enough hardness, good toughness after heat treated, they won't be broken after bent.

VS



Bad screws on the market: they have high strength and bad toughness, thread will easily be broken, because the screws are not tempered.

### NO6. Corrosion Resistance Comparison of SUS304



Our SUS304 screws: nickel chemical element content won't be less than 8, meets ISO requirement. The finish won't be oxidized, rusted and has good anti-corrosion capacity standard, they won't be broken after 90° bent, high strength, good toughness.

VS



SUS304 screws on the market: nickel chemical element content will be less than 8, even doesn't have nickel plated, which doesn't meet ISO requirement. The finish will be oxidized, rusted and lose anti-corrosion capacity.

# FINEX

## — 20 YEARS

### Non-standard Fasteners Customization Experience

+86-13527934468

alianchen@finexfastener.com

### Contact us



## Partners and Exhibitions





## FAQ

**Q1: What is your main products and material supply?**

**A1:** Our main products are Electronic screws, Sems screws, Tapping screws, Chicago screws, Shoulder screws etc. Special Non-standard studs, Turning parts and High-end precision complex CNC Machining parts etc.

**A2:** Carbon Steel, Alloy Steel, Aluminum alloy, Stainless Steel, Brass, Copper, Titanium alloy or according to your requirement.

**Q2: When can I get the price?**

**A:** We usually offer you a quotation within 12 hours, and the special offer is not more than 24 hours. Any urgent cases, please contact us directly by phone or send email to us.

**Q3: What about the transportation and delivery date?**

**A:** If the weight of goods more than 80kg, Normally we use shipment to transport the orders. It is about 20-30 days. If the weight of goods less than 80kg, or there are urgent, we can send the goods via air express, It is 3~5 days.

**Q4: What's your packing? What to do in case of damaged goods during transport?**

**A1:** Our Normal packing is bulking in Cartons, less than 20 kgs/carton, 48 cartons / pallet. We also can pack products according to your requirement.

**A2:** To avoid any subsequent trouble regarding quality issue, we suggest you check the goods once you receive them. If there is any transport damaged or quality issue, don't forget take the detail pictures and contact us as soon as possible, we will properly handle it to make sure your loss to reduce to the smallest.

**Q5: Can I get discounts?**

**A:** Yes, for big order, frequent customers, we give reasonable discounts.

Q6: Do you have enough capacity?

A: Our production equipment is a new imported equipment. We have a group of skilled workers who have been working for more than 10 years. Their production experience is very rich and their skills are very skilled. The screws can be 30 million pcs/month. We have sufficient funds to ensure the normal operation of the factory.



**Finexpress Precision Manufacturing (dongguan) Co., Ltd**



+86-13527934468



alianchen@finexfastener.com



metalscrewfastener.com

Building 2, No. 129 Xinmalian Xinma Road, Dalang Town, Dongguan, Guangdong, China