

## 304 Stainless Steel Round Head Self Drilling Wood Screws Metric Tapping Screws

### Our Product Introduction

#### Basic Information

- Place of Origin: Guangdong, China
- Brand Name: FinExpress
- Model Number: FinExpress Screw
- Minimum Order Quantity: 30000
- Price: \$0.10/pieces 30000-99999 pieces
- Packaging Details: 1.1000pcs / plastic bag,20kgs/ carton ,then put on the wood pallet ,  
2.Carton size:28cm\*18cm\*13cm,  
3.Wood pallet size:118cm\*113cm,Weight:700~800Kg  
Bulk:0.8 cubic  
4.The weight of 20 FT Container:20~25 Tons  
5,As your requirements
- Delivery Time: 7~15 Working Day
- Payment Terms: T/T,L/C,D/A,D/P
- Supply Ability: 500000000 Piece/Pieces per Week

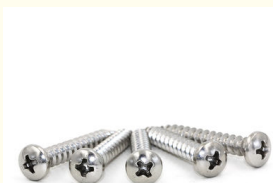


#### Product Specification

- Finish: Plain, ZINC PLATED
- Material: Stainless Steel, Steel
- Measurement System: INCH, Metric, Imperial (Inch)
- Head Style: Round, Custom
- Standard: DIN
- Length: 16mm~180mm
- Delivery Time: In Stock 5~7 Working Days, Customized 15~25 Working Days
- Service: All Issues Will Be Noted Within 24hours
- Advantages: 12 Years Experience In Fastener Export
- Tapping Screws Type: Drywall Screws Drywall To Drywall
- Customized Support: OEM
- Application: Furniture/ Wood/Construction
- Highlight: **Stainless Steel Self Drilling Wood Screws, Round Head Metric Tapping Screws, Round Head Stainless Self Drilling Screws**



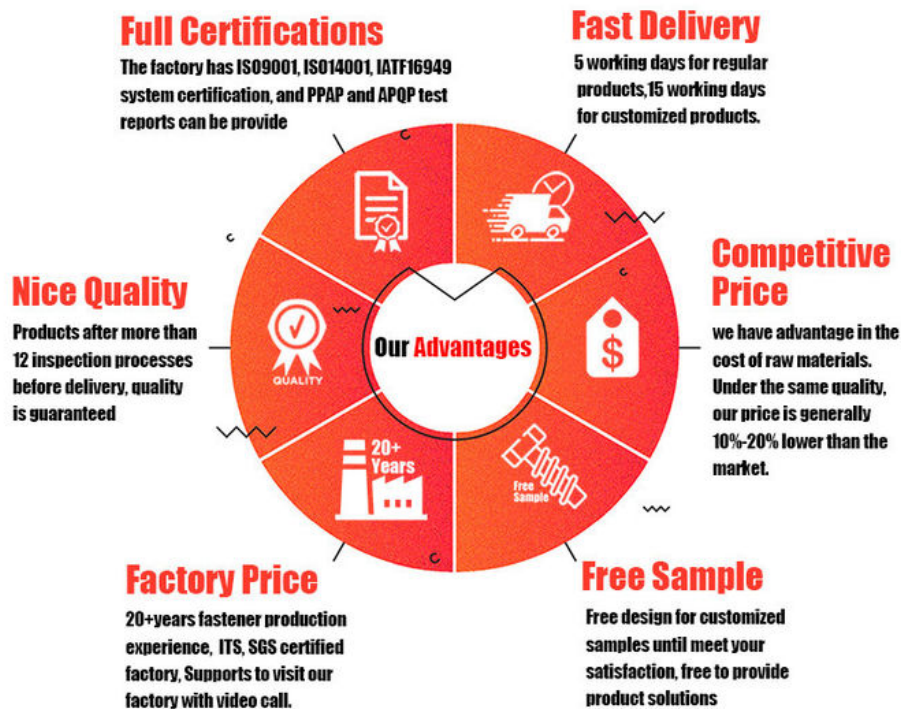
#### More Images



## Product Description

304 Stainless Steel Round Head Self Drilling Wood Screws Metric Tapping Screws

### FINEX | Fine and Express FASTENERS



## Premium 304 Stainless Steel Construction

Our 304 Stainless Steel Round Head Self Drilling Wood Screws are crafted from top-grade stainless steel, renowned for its outstanding corrosion resistance. This means they can withstand exposure to moisture, humidity, and even outdoor elements without succumbing to rust or degradation. Whether you're working on a wooden deck in a coastal area, a garden pergola, or indoor furniture that might come into contact with spills or condensation, these screws will maintain their integrity and appearance over time, ensuring the longevity of your woodworking projects.

## Self-Drilling Efficiency

Engineered with a sharp, self-drilling tip, these screws are designed to penetrate wood effortlessly. Gone are the days of pre-drilling holes, as these innovative screws can create their own pilot holes while being driven in. This not only saves you significant time and labor but also reduces the risk of splitting the wood, especially in softer or more delicate timber varieties. The self-drilling feature makes them a favorite among DIY hobbyists and professional carpenters alike, streamlining the assembly process and allowing for quicker project completion.

## Metric Tapping Precision

With metric threading, these screws offer precise and reliable fastening. The carefully calibrated thread pitch and diameter ensure a snug fit into the wood, providing maximum holding power. This precision is crucial when it comes to constructing joints that need to bear weight or withstand stress, such as in cabinetry, bookshelves, or structural wooden frameworks. You can trust that these screws will lock firmly in place, preventing

loosening over time and maintaining the stability of your creations.

## Round Head Aesthetic and Functionality

The round head design serves both practical and aesthetic purposes. Functionally, it provides a larger surface area for the screw to grip the wood, enhancing its load-bearing capacity. Aesthetically, it gives a clean, finished look to your projects. Whether you're leaving the screws exposed as a decorative element or simply want a smooth, professional appearance, the round head blends in seamlessly with wooden surfaces, adding a touch of elegance to your craftsmanship.

## Versatile Applications

These screws are incredibly versatile and suitable for a vast array of woodworking projects. From small-scale DIY home decor items like picture frames and wooden ornaments to large-scale construction projects such as building fences, sheds, and timber-frame houses, they have you covered. Their compatibility with different types of wood, including hardwoods and softwoods, further expands their usability, making them an essential tool in any woodworker's arsenal.

## Customer Support You Can Count On

We understand the importance of a seamless woodworking experience. That's why our dedicated customer service team is always on standby to assist you with any questions or concerns regarding our 304 Stainless Steel Round Head Self Drilling Wood Screws. Whether you need advice on installation techniques, have a query about product compatibility, or require assistance with an order, we're here to ensure your project progresses without a hitch.

Choose our 304 Stainless Steel Round Head Self Drilling Wood Screws Metric Tapping Screws for your next woodworking endeavor and enjoy the benefits of durability, efficiency, and versatility. They are the go-to choice for bringing your wooden creations to life with confidence and precision.

**FINEX | Fine and Express**  
**FASTENERS**    

[Click Here To Start Customizing](#)  
**Customizable Hole Shape**



**Pozi**



**Phillips**



**Anti-theft  
Triangle**



**Slotted**



**Hex Socket**



**Torx**



**Torx-internal  
Tamber proof pin**



**H type  
anti theft**



**Tri-wing**



**Two-Hole  
Tamber proof**



**One way  
anti theft**



**Square Slot  
Combination**



**Phillips Slot  
Combination**



**Slot 6 Lobe  
Combination**



**Tri-wing internal  
Tamber proof pin**





**FINEX | Fine and Express**  
**FASTENERS**    

**OEM** **ODM**  
ORIGINAL ORIGINAL  
EQUIPMENT DESIGN  
MANUFACTURER MANUFACTURER

**What We Produce is Not Just a Screw. We Provide a Guarantee of Secure Fastening**



## Specification

### More Detail Informations

Available Material

- 1.Stainless Steel: SS303, SS304, SS316, SS410, SS420;
  - 2.Carbon steel: C1006,C1010,C1018,C1022,C1035K,C1045;
  - 3.Brass: C3602,C3604,Hpb59,Hpb62,Hpb65,Hpb58,Hpb70 ;
  - 4.Aluminum: Al6061, Al6063 etc
- or as your requirements

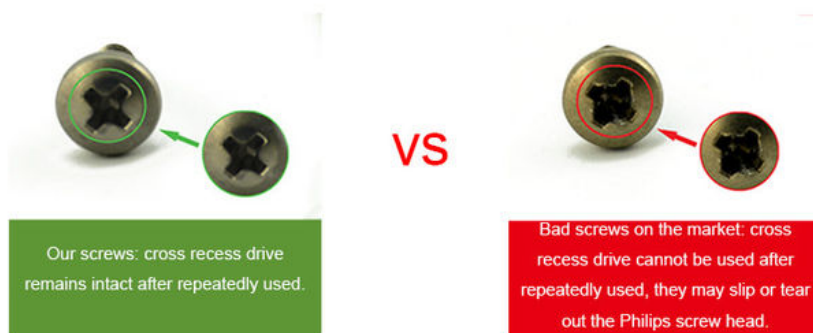
Head type

CSK Head,Pan Head,Truss Head,Hexagon Head,Round Head,Oval Head,Button Head,Cap Head,Cheese Head,etc.

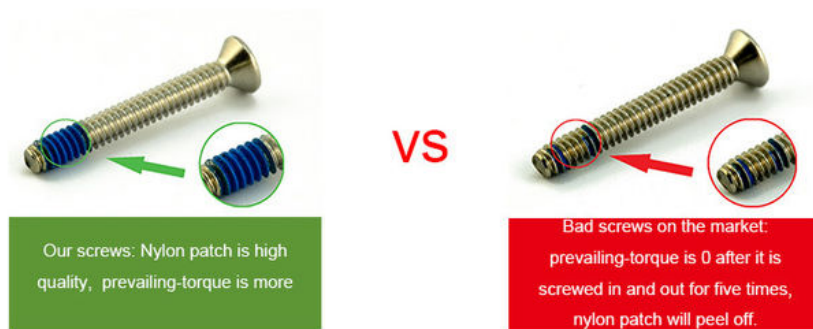
Hardness	Carbon Steel:HRC:28~35 ,HV450~700 Alloy Steel:HRC:32~39(grade10.9) HRC:39~44(grade12.9)
Finish	Zinc plated, Nickel plated, Bronze, Copper,Phosphate, Oxidation black, Passivation, Tin, Dacromet, Gold, Chrome, Silver, Phosphorization,Zinc-nickel alloy plated etc.
Sample Available	The sample is free of charge if we have the existing tooling,you only need to pay for the freight cost
Delivery time	Samples time 3-5 working days, Lead time 20-25 working days
Pricing Term	EXW Dongguan(FCA),FOB, CIF, CNF, DDU,etc.
Packing	Bulk in PE bag or Small boxes.then in carton .pallet
Payment term	TT (30% in advance as deposit, balance before delivery) , L/C, Western Union,PayPal etc
Management system	ISO9001:2015
Certificate	ISO,ROHS

## Why Choose Us

### NO1.Drive compariason



### NO2.Torque comparison



### NO3.Screw Plating Comparison



Our screws: good finish, clear thread, even coating, bright appearance.

VS



Bad screws on the market: bad finish, uneven coating, thread is oxidized, the finish is blacked.

### NO4.Screw Material Comparison



Our screws: we use quality carbon steel material, Chemical Element content in Steel meets the requirement of ISO standard, they won't be broken after 90° bent, high strength, good toughness requirement of ISO

VS



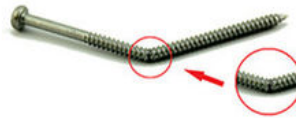
Bad screws on the market: bad carbon steel material, Chemical Element content in Steel doesn't meet the requirement of ISO standard, they will be easily broken after 90° bent, high strength and bad toughness.

### NO5.Mechanical Properties comparison



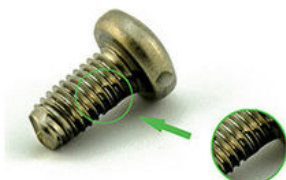
Our self tapping screws: our screws have high strength, enough hardness, good toughness after heat treated, they won't be broken after bent.

VS



Bad screws on the market: they have high strength and bad toughness, thread will easily be broken, because the screws are not tempered.

### NO6. Corrosion Resistance Comparison of SUS304



Our SUS304 screws: nickel chemical element content won't be less than 8, meets ISO requirement. The finish won't be oxidized, rusted and has good anti-corrosion capacity standard, they won't be broken after 90° bent, high strength, good toughness.

VS



SUS304 screws on the market: nickel chemical element content will be less than 8, even doesn't have nickel plated, which doesn't meet ISO requirement. The finish will be oxidized, rusted and lose anti-corrosion capacity.

# FINEX

## — 20 YEARS

### Non-standard Fasteners Customization Experience

+86-13527934468

alianchen@finexfastener.com

#### Contact us



## Partners and Exhibitions





## FAQ

**Q1: What is your main products and material supply?**

**A1:** Our main products are Electronic screws, Sems screws, Tapping screws, Chicago screws, Shoulder screws etc. Special Non-standard studs, Turning parts and High-end precision complex CNC Machining parts etc.

**A2:** Carbon Steel, Alloy Steel, Aluminum alloy, Stainless Steel, Brass, Copper, Titanium alloy or according to your requirement.

**Q2: When can I get the price?**

**A:** We usually offer you a quotation within 12 hours, and the special offer is not more than 24 hours. Any urgent cases, please contact us directly by phone or send email to us.

**Q3: What about the transportation and delivery date?**

**A:** If the weight of goods more than 80kg, Normally we use shipment to transport the orders. It is about 20-30 days. If the weight of goods less than 80kg, or there are urgent, we can send the goods via air express, It is 3~5 days.

**Q4: What's your packing? What to do in case of damaged goods during transport?**

**A1:** Our Normal packing is bulking in Cartons, less than 20 kgs/carton, 48 cartons / pallet. We also can pack products according to your requirement.

**A2:** To avoid any subsequent trouble regarding quality issue, we suggest you check the goods once you receive them. If there is any transport damaged or quality issue, don't forget take the detail pictures and contact us as soon as possible, we will properly handle it to make sure your loss to reduce to the smallest.

**Q5: Can I get discounts?**

**A:** Yes, for big order, frequent customers, we give reasonable discounts.

Q6: Do you have enough capacity?

A: Our production equipment is a new imported equipment. We have a group of skilled workers who have been working for more than 10 years. Their production experience is very rich and their skills are very skilled. The screws can be 30 million pcs/month. We have sufficient funds to ensure the normal operation of the factory.



**Finexpress Precision Manufacturing (dongguan) Co., Ltd**



+86-13527934468



alianchen@finexfastener.com



metalscrewfastener.com

Building 2, No. 129 Xinmalian Xinma Road, Dalang Town, Dongguan, Guangdong, China