

## Corrosion Resistant Star Sheet Metal Self Tapping Screw In Metric System

### Our Product Introduction

for more products please visit us on [metalscrewfastener.com](http://metalscrewfastener.com)

#### Basic Information

- Place of Origin: Guangdong, China
- Brand Name: FinExpress
- Model Number: FinExpress Screw
- Minimum Order Quantity: 30000
- Price: \$0.03/pieces 30000-99999 pieces
- Packaging Details: 1.1000pcs / plastic bag,20kgs/ carton ,then put on the wood pallet ,  
2.Carton size:28cm\*18cm\*13cm,  
3.Wood pallet size:118cm\*113cm,Weight:700~800Kg  
Bulk:0.8 cubic  
4.The weight of 20 FT Container:20~25 Tons  
5,As your requirements
- Delivery Time: 7~15 Working Day
- Payment Terms: T/T, L/C, D/A, D/P
- Supply Ability: 500000000 Piece/Pieces per Week

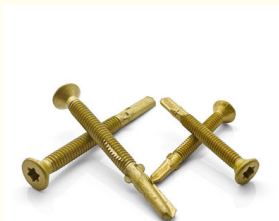


#### Product Specification

- Finish: Black, ZINC, Plain, Black Oxide, ZINC PLATED, BLUE DYED, Cadmium Plated, Zinc-aluminum Coated
- Material: Brass, Stainless Steel, Steel, Aluminium, Plastic, NICKEL
- Measurement System: INCH, Metric
- Head Style: Flat
- Standard: Non-standard
- MOQ: 1 Piece In Stock, 30,000 Pcs Customized
- Package: Small Packing+Carton Packing+Pallet
- Delivery Time: In Stock 5~7 Working Days, Customized 15~25 Working Days
- Service: OEM ODM Custom Service
- Length: 1mm~500mm
- Certificate: ISO9001:2015, SGS, RoHs
- Highlight: **Corrosion Resistant Self Tapping Screw, Sheet Metal Self Tapping Screw**



#### More Images



Factory Field  
Certification  
strictly certified  
by alibaba

Quality report  
our products have  
been tested by  
ISO9001  
IATF16949 SGS



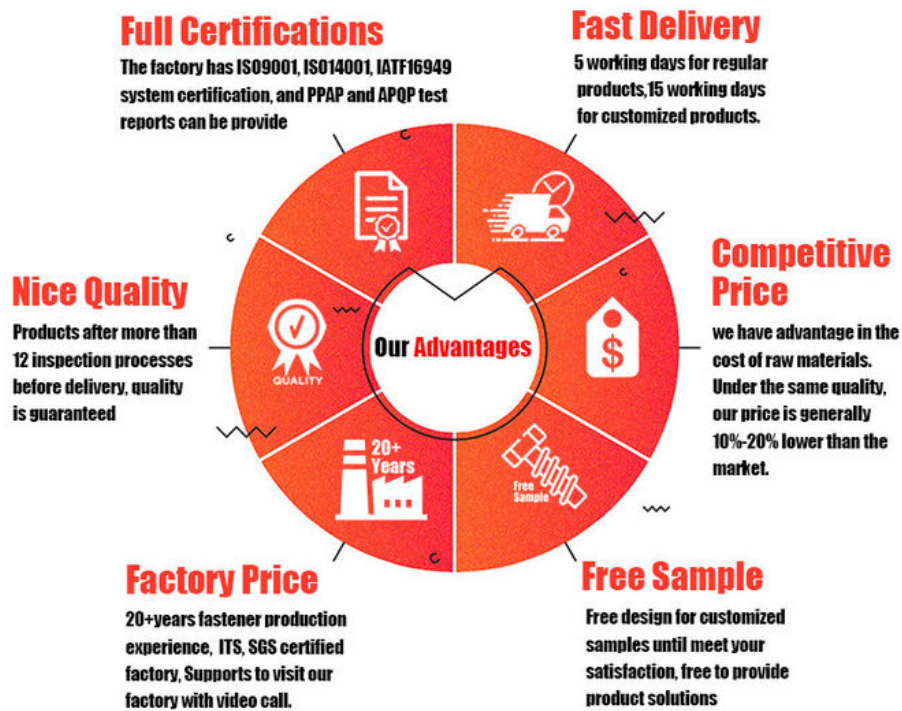
#### Factory



## Product Description

Corrosion Resistant Star Sheet Metal Self Tapping Screw In Metric System

### FINEX | Fine and Express FASTENERS



## Product Overview

Engineered for durability and precision in sheet metal applications, our Corrosion-Resistant Star Drive (Torx) Self-Tapping Screws combine a rust-proof design with metric sizing for global compatibility. Featuring a Torx drive for high-torque efficiency, a sharp self-tapping tip, and corrosion-resistant materials, these screws are ideal for HVAC systems, automotive panels, roofing, and industrial metal assemblies.

## Key Features


Corrosion Resistance

Material Options:

Stainless Steel 304/316: Ideal for harsh environments (marine, chemical, or coastal).

Zinc-Plated Carbon Steel: Electro-galvanized coating for indoor/mild outdoor use.

Salt-Spray Tested: 500+ hours (ASTM B117 compliant).



## Star Drive (Torx) Design

Torx T20/T25/T30: Reduces cam-out, ensures precise torque transfer, and extends tool life.

Tamper-Resistant Options: Torx TR variants available for security-critical applications.

## Self-Tapping Efficiency

Sharp, Winged Drill Point: Penetrates sheet metal (up to 2.5mm thickness) without pre-drilling.

Fine/Coarse Threads: Fine threads for thin metal; coarse threads for rapid installation.

## Metric Precision Sizing

Diameter: M3–M8 (metric standard).

Length: 12mm–50mm (custom lengths up to 100mm available).

## Certified Quality

DIN 7981/7500-K: Compliant with European fastener standards.

ISO 14583/ISO 3506: Ensures mechanical and corrosion performance.



**Pozi**



**Phillips**



**Anti-theft  
Triangle**



**Slotted**



**Hex Socket**



**Torx**



**Torx-internal  
Tamber proof pin**



**H type  
anti theft**



**Tri-wing**



**Two-Hole  
Tamber proof**



**One way  
anti theft**



**Square Slot  
Combination**



**Phillips Slot  
Combination**



**Slot 6 Lobe  
Combination**



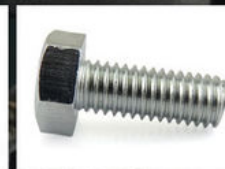
**Tri-wing internal  
Tamber proof pin**



**Blue Zinc**



**Yellow Zinc**



**White Zinc**



**Black Zinc**



**Nickel Plated**



**Black Oxide**



**Anodizing**



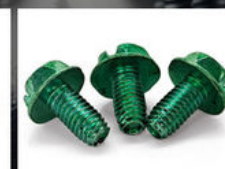
**Dacromet**



**Black  
Electrophoresis**



**Antique Bronze**



**Green**



**Baking Finish**





**What We Produce is Not Just a Screw. We Provide a Guarantee of Secure Fastening**



## Specification

	More Detail Informations
Available Material	1.Stainless Steel: SS303, SS304, SS316, SS410, SS420; 2. Carbon steel: C1006,C1010,C1018,C1022,C1035K,C1045; 3.Brass: C3602,C3604,Hpb59,Hpb62,Hpb65,Hpb58,Hpb70 ; 4.Aluminum: Al6061, Al6063 etc or as your requirements
Head type	CSK Head,Pan Head,Truss Head,Hexagon Head,Round Head,Oval Head,Button Head,Cap Head,Cheese Head,etc.
Hardness	Carbon Steel:HRC:28~35 ,HV450~700 Alloy Steel:HRC:32~39(grade10.9) HRC:39~44(grade12.9)
Finish	Zinc plated, Nickel plated, Bronze, Copper,Phosphate, Oxidation black, Passivation, Tin, Dacromet, Gold, Chrome, Silver, Phosphorization,Zinc-nickel alloy plated etc.
Sample Available	The sample is free of charge if we have the existing tooling,you only need to pay for the freight cost
Delivery time	Samples time 3-5 working days, Lead time 20-25 working days
Pricing Term	EXW Dongguan(FCA),FOB, CIF, CNF, DDU,etc.
Packing	Bulk in PE bag or Small boxes.then in carton .pallet
Payment term	TT (30% in advance as deposit, balance before delivery) , L/C, Western Union,PayPal etc
Management system	ISO9001:2015
Certificate	ISO,ROHS

## Why Choose Us

### Why Choose Us?

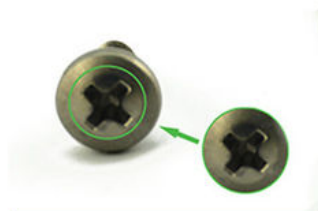
**OEM/ODM Support:** Full custom packaging, branding, and documentation.

**Quality Assurance:** ISO 9001-certified with full material traceability and testing (salt-spray, torque, tensile).

**Flexible MOQs:** Prototype batches to large-scale production.

**Fast Turnaround:** 10–15 days for standard orders; expedited options available.

### NO1.Drive compariason



Our screws: cross recess drive remains intact after repeatedly used.

VS



Bad screws on the market: cross recess drive cannot be used after repeatedly used, they may slip or tear out the Philips screw head.

### NO2.Torque comparison



Our screws: Nylon patch is high quality, prevailing-torque is more

VS



Bad screws on the market: prevailing-torque is 0 after it is screwed in and out for five times, nylon patch will peel off.

### NO3.Screw Plating Comparison



Our screws: good finish, clear thread, even coating, bright appearance.

VS



Bad screws on the market: bad finish, uneven coating, thread is oxidized, the finish is blacked.

### NO4.Screw Material Comparison



Our screws: we use quality carbon steel material, Chemical Element content in Steel meets the requirement of ISO standard, they won't be broken after 90° bent, high strength, good toughness.requirement of ISO

VS



Bad screws on the market: bad carbon steel material, Chemical Element content in Steel doesn't meet the requirement of ISO standard, they will be easily broken after 90° bent, high strength and bad toughness.



## NO5.Mechanical Properties comparison



VS



Our self tapping screws: our screws have high strength, enough hardness, good toughness after heat treated, they won't be broken after bent.

Bad screws on the market: they have high strength and bad toughness, thread will easily be broken, because the screws are not tempered.

## NO6. Corrosion Resistance Comparison of SUS304



VS



Our SUS304 screws: nickel chemical element content won't be less than 8, meets ISO requirement. The finish won't be oxidized, rusted and has good anti-corrosion capacity. standard, they won't be broken after 90° bent, high strength, good toughness.

SUS304 screws on the market: nickel chemical element content will be less than 8, even doesn't have nickel plated, which doesn't meet ISO requirement. The finish will be oxidized, rusted and lose anti-corrosion capacity.

## Company Profile

# FINEX

**— 20 YEARS**  
**Non-standard Fasteners**  
**Customization Experience**

+86-13527934468

alianchen@finexfastener.com

**Contact us**





## Partners and Exhibitions



**Raw Material (IQC)**



**Head Size (IPQC)**



**Thread Size (IPQC)**



**Spot check on surface treatment**



**Image Measuring Instrument**



**Hardness Test**



**ROHS Test**



**Salt Spray Test**



**Tensile Force Test**



**Touque Test**



**Screw Optical Screener**



**FQC by Manual Selection**

## FAQ

**Q1: What is your main products and material supply?**

**A1:** Our main products are Electronic screws, Sems screws, Tapping screws, Chicago screws, Shoulder screws etc. Special Non-standard studs, Turning parts and High-end precision complex CNC Machining parts etc.

A2: Carbon Steel, Alloy Steel, Aluminum alloy,Stainless Steel, Brass, Copper ,Titanium alloy or according to your requirement.

Q2: When can I get the price?

A: We usually offer you a quotation within 12 hours, and the special offer is not more than 24 hours.Any urgent cases, please contact us directly by phone or send email to us.

Q3: What about the transportation and delivery date?

A: If the weight of goods more than 80kg,Normally we use shipment to transprot the orders. It is about 20-30days . If the weight of goods less than 80kg,or there are urgent, we can send the goods via air express,It is 3~5 days.

Q4: What's your packing?What to do in case of damaged goods during transport?

A1: Our Normal packing is bulking in Cartons, less than 20 kgs/carton, 48 cartons / pallet. We also can pack products according to your requirement.

A2: To avoid any subsequent trouble regarding quality issue, we suggest you check the goods once you receive them. If there is any transport damaged or quality issue, don't forget take the detail pictures and contact us as soon as possible, we will properly handle it to make sure your loss to reduce to the smallest.

Q5: Can I get discounts?

A: Yes, for big order, frequent customers, we give reasonable discounts.

Q6: Do you have enough capacity?

A: Our production equipment is a new imported equipment. We have a group of skilled workers who have been working for more than 10 years. Their production experience is very rich and their skills are very skilled. The screws can be 30 million pcs/month. We have sufficient funds to ensure the normal operation of the factory.



**Finexpress Precision Manufacturing (dongguan) Co., Ltd**



+86-13527934468



alianchen@finexfastener.com



metalscrewfastener.com

Building 2, No. 129 Xinmalian Xinma Road, Dalang Town, Dongguan, Guangdong, China