

## Flange Head Self Tapping Concrete Screws One Slot Self Drilling Metal Screws

### Our Product Introduction

for more products please visit us on [metalscrewfastener.com](http://metalscrewfastener.com)

#### Basic Information

- Place of Origin: Guangdong, China
- Brand Name: FinExpress
- Model Number: Tapping Screws
- Minimum Order Quantity: 30000
- Price: \$0.03/pieces 10000-49999 pieces

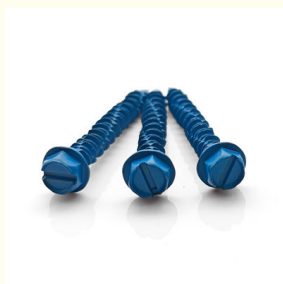


#### Product Specification

- Finish: Plain, Black Oxide, ZINC PLATED, Custom
- Material: Stainless Steel, Steel
- Measurement System: INCH, Metric, Imperial (Inch)
- Head Style: Flange Head
- Standard: DIN
- Delivery Time: In Stock 7~15 Working Days, Customized 20~25 Working Days
- Service: All Issues Will Be Noted Within 24hours
- Advantages: Competitive Price With High Quality & Good After-sales Service
- Customized Support: OEM
- MOQ: 1 Piece In Stock, 30,000 Pcs Customized
- Certificate: IATF16949/ISO9001:2015/ISO14001:2015
- Length: 13mm~180mm
- Highlight: **Flange Head Self Tapping Concrete Screws, One Slot Self Tapping Concrete Screws,**



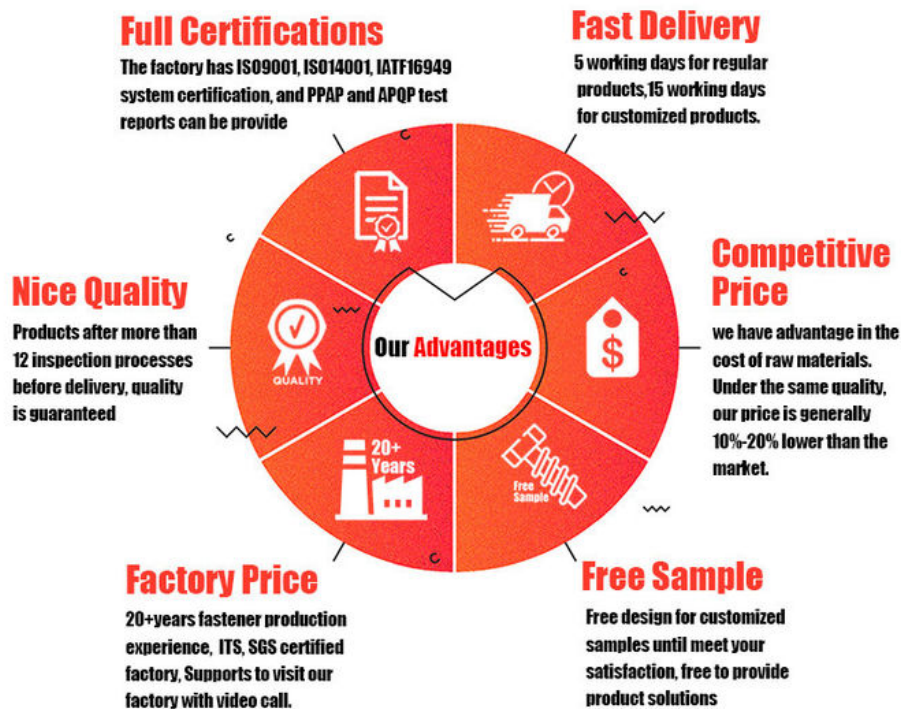
#### More Images



## Product Description

Flange Head Self Tapping Concrete Screws One Slot Self Drilling Metal Screws

### FINEX | Fine and Express FASTENERS



Upgrade your construction and DIY projects with our **Flange Head Self-Tapping Concrete Screws**. Designed for durability and ease of use, these screws are perfect for fastening materials to concrete, brick, metal, and other tough surfaces. Whether you're working on a professional job site or a home improvement task, these self-drilling screws deliver unmatched performance and reliability.

#### Key Features:

**Flange Head Design:** The wide flange head provides a secure grip and prevents over-tightening, ensuring a flush and stable finish. It also eliminates the need for additional washers, saving you time and effort.

**Self-Tapping & Self-Drilling:** Equipped with a sharp, hardened drill point, these screws can drill and tap their own holes, eliminating the need for pre-drilling. This feature significantly reduces installation time and effort.

**One Slot Drive:** The single slot design allows for easy and quick installation using standard screwdrivers or power tools. It

ensures a secure fit and minimizes the risk of stripping.

**Durable Construction:** Made from high-quality metal, these screws are resistant to corrosion, rust, and wear, making them suitable for both indoor and outdoor applications.

**Versatile Applications:** Ideal for use in concrete, masonry, metal, wood, and other hard materials. Perfect for securing fixtures, frames, brackets, and more.

#### Technical Specifications:

Material: High-strength steel

Surface Finish: Corrosion-resistant coating

Head Type: Flange head

Drive Type: One slot

Point Type: Self-drilling

Thread Type: Self-tapping

**Why Choose Our Flange Head Self-Tapping Concrete Screws?**

**Time-Saving:** No pre-drilling required, thanks to the self-drilling and self-tapping design.

**Strong Hold:** The flange head ensures a tight and secure connection.

**Long-Lasting:** Built to withstand harsh conditions and heavy-duty use.

**Easy to Use:** Compatible with most standard tools for hassle-free installation.

**Applications:**

Securing metal frames to concrete walls

Installing electrical boxes, conduits, and plumbing fixtures

Mounting shelves, cabinets, and brackets

General construction and renovation projects

**Package Includes:**

Flange Head Self-Tapping Concrete Screws (quantity as selected)

Order Now and Experience the Difference!

Enhance your projects with the strength and reliability of our Flange Head Self-Tapping Concrete Screws. Perfect for professionals and DIY enthusiasts alike, these screws are a must-have for any toolbox. Add to cart today and enjoy fast shipping and exceptional customer service!

**FINEX | Fine and Express**  
**FASTENERS**    

[Click Here To Start Customizing](#)  
**Customizable Hole Shape**



**Pozi**



**Phillips**



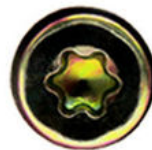
**Anti-theft  
Triangle**



**Slotted**



**Hex Socket**



**Torx**



**Torx-internal  
Tamper proof pin**



**H type  
anti theft**



**Tri-wing**



**Two-Hole  
Tamper proof**



**One way  
anti theft**



**Square Slot  
Combination**



**Phillips Slot  
Combination**



**Slot 6 Lobe  
Combination**



**Tri-wing internal  
Tamper proof pin**





**FINEX | Fine and Express**  
**FASTENERS**    

**OEM** **ODM**  
ORIGINAL ORIGINAL  
EQUIPMENT DESIGN  
MANUFACTURER MANUFACTURER

**What We Produce is Not Just a Screw. We Provide a Guarantee of Secure Fastening**



## Specification

### More Detail Informations

Available Material

- 1.Stainless Steel: SS303, SS304, SS316, SS410, SS420;
  - 2.Carbon steel: C1006,C1010,C1018,C1022,C1035K,C1045;
  - 3.Brass: C3602,C3604,Hpb59,Hpb62,Hpb65,Hpb58,Hpb70 ;
  - 4.Aluminum: Al6061, Al6063 etc
- or as your requirements

Head type

CSK Head,Pan Head,Truss Head,Hexagon Head,Round Head,Oval Head,Button Head,Cap Head,Cheese Head,etc.

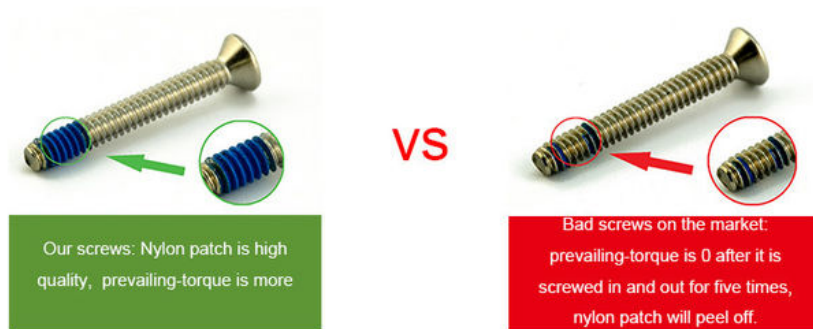
Hardness	Carbon Steel:HRC:28~35 ,HV450~700 Alloy Steel:HRC:32~39(grade10.9) HRC:39~44(grade12.9)
Finish	Zinc plated, Nickel plated, Bronze, Copper,Phosphate, Oxidation black, Passivation, Tin, Dacromet, Gold, Chrome, Silver, Phosphorization,Zinc-nickel alloy plated etc.
Sample Available	The sample is free of charge if we have the existing tooling,you only need to pay for the freight cost
Delivery time	Samples time 3-5 working days, Lead time 20-25 working days
Pricing Term	EXW Dongguan(FCA),FOB, CIF, CNF, DDU,etc.
Packing	Bulk in PE bag or Small boxes.then in carton .pallet
Payment term	TT (30% in advance as deposit, balance before delivery) , L/C, Western Union,PayPal etc
Management system	ISO9001:2015
Certificate	ISO,ROHS

## Why Choose Us

### NO1.Drive compariason



### NO2.Torque comparison



### NO3.Screw Plating Comparison



Our screws: good finish, clear thread, even coating, bright appearance.

VS



Bad screws on the market: bad finish, uneven coating, thread is oxidized, the finish is blacked.

### NO4.Screw Material Comparison



Our screws: we use quality carbon steel material, Chemical Element content in Steel meets the requirement of ISO standard, they won't be broken after 90° bent, high strength, good toughness requirement of ISO

VS



Bad screws on the market: bad carbon steel material, Chemical Element content in Steel doesn't meet the requirement of ISO standard, they will be easily broken after 90° bent, high strength and bad toughness.

### NO5.Mechanical Properties comparison



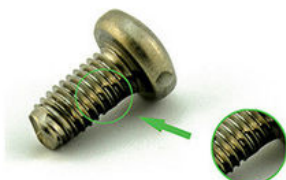
Our self tapping screws: our screws have high strength, enough hardness, good toughness after heat treated, they won't be broken after bent.

VS



Bad screws on the market: they have high strength and bad toughness, thread will easily be broken, because the screws are not tempered.

### NO6. Corrosion Resistance Comparison of SUS304



Our SUS304 screws: nickel chemical element content won't be less than 8, meets ISO requirement. The finish won't be oxidized, rusted and has good anti-corrosion capacity standard, they won't be broken after 90° bent, high strength, good toughness.

VS



SUS304 screws on the market: nickel chemical element content will be less than 8, even doesn't have nickel plated, which doesn't meet ISO requirement. The finish will be oxidized, rusted and lose anti-corrosion capacity.

# FINEX

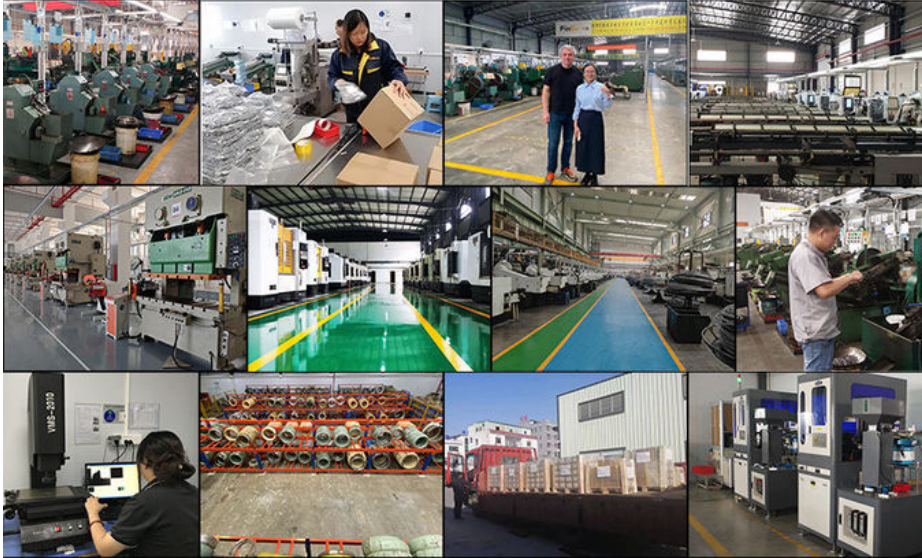
## — 20 YEARS

### Non-standard Fasteners Customization Experience

+86-13527934468

alianchen@finexfastener.com

### Contact us



## Partners and Exhibitions





## FAQ

**Q1: What is your main products and material supply?**

**A1:** Our main products are Electronic screws, Sems screws, Tapping screws, Chicago screws, Shoulder screws etc. Special Non-standard studs, Turning parts and High-end precision complex CNC Machining parts etc.

**A2:** Carbon Steel, Alloy Steel, Aluminum alloy, Stainless Steel, Brass, Copper, Titanium alloy or according to your requirement.

**Q2: When can I get the price?**

**A:** We usually offer you a quotation within 12 hours, and the special offer is not more than 24 hours. Any urgent cases, please contact us directly by phone or send email to us.

**Q3: What about the transportation and delivery date?**

**A:** If the weight of goods more than 80kg, Normally we use shipment to transport the orders. It is about 20-30 days. If the weight of goods less than 80kg, or there are urgent, we can send the goods via air express, It is 3~5 days.

**Q4: What's your packing? What to do in case of damaged goods during transport?**

**A1:** Our Normal packing is bulking in Cartons, less than 20 kgs/carton, 48 cartons / pallet. We also can pack products according to your requirement.

**A2:** To avoid any subsequent trouble regarding quality issue, we suggest you check the goods once you receive them. If there is any transport damaged or quality issue, don't forget take the detail pictures and contact us as soon as possible, we will properly handle it to make sure your loss to reduce to the smallest.

**Q5: Can I get discounts?**

**A:** Yes, for big order, frequent customers, we give reasonable discounts.

Q6: Do you have enough capacity?

A: Our production equipment is a new imported equipment. We have a group of skilled workers who have been working for more than 10 years. Their production experience is very rich and their skills are very skilled. The screws can be 30 million pcs/month. We have sufficient funds to ensure the normal operation of the factory.



**Finexpress Precision Manufacturing (dongguan) Co., Ltd**



+86-13527934468



alianchen@finexfastener.com



metalscrewfastener.com

Building 2, No. 129 Xinmalian Xinma Road, Dalang Town, Dongguan, Guangdong, China