

Flat Head Thin Cylindrical Phillips Spotting Stepped Screw With ISO9001 Certificate

Our Product Introduction

Basic Information

- Place of Origin: Guangdong, China
- Brand Name: FinExpress
- Model Number: Shoulder Screw
- Minimum Order Quantity: 30000
- Price: \$0.05/pieces 5000-9999 pieces
- Packaging Details: 1.1000pcs / plastic bag,20kgs/ carton ,then put on the wood pallet ,
2.Carton size:28cm*18cm*13cm,
3.Wood pallet size:118cm*113cm,Weight:700~800Kg
Bulk:0.8 cubic
4.The weight of 20 FT Container:20~25 Tons
5,As your requirements
- Delivery Time: 7~15 Working Day
- Payment Terms: T/T, L/C, D/A, D/P
- Supply Ability: 500000000 Piece/Pieces per Week

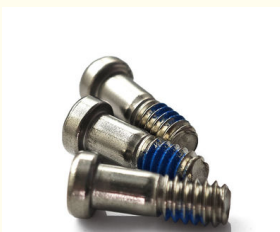
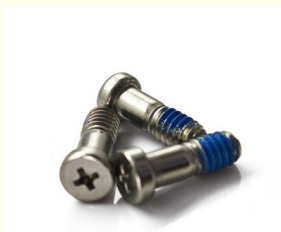


Product Specification

- Finish: Plain, ZINC PLATED
- Material: Stainless Steel, Steel
- Measurement System: INCH, Metric
- Head Style: Pan, Truss, Flat, HEX
- Standard: ISO, Non-standard
- MOQ: 1 Piece In Stock, 30,000 Pcs Customized
- Package: Small Packing+Carton Packing+Pallet
- Delivery Time: In Stock 5~7 Working Days, Customized 15~25 Working Days
- Service: OEM ODM Custom Service
- Length: 1mm~500mm
- Certificate: ISO9001:2015, RoHs
- Highlight: Flat Head Stepped Screw,
Spotting Stepped Screw,
Thin Cylindrical Stepped Shoulder Bolt



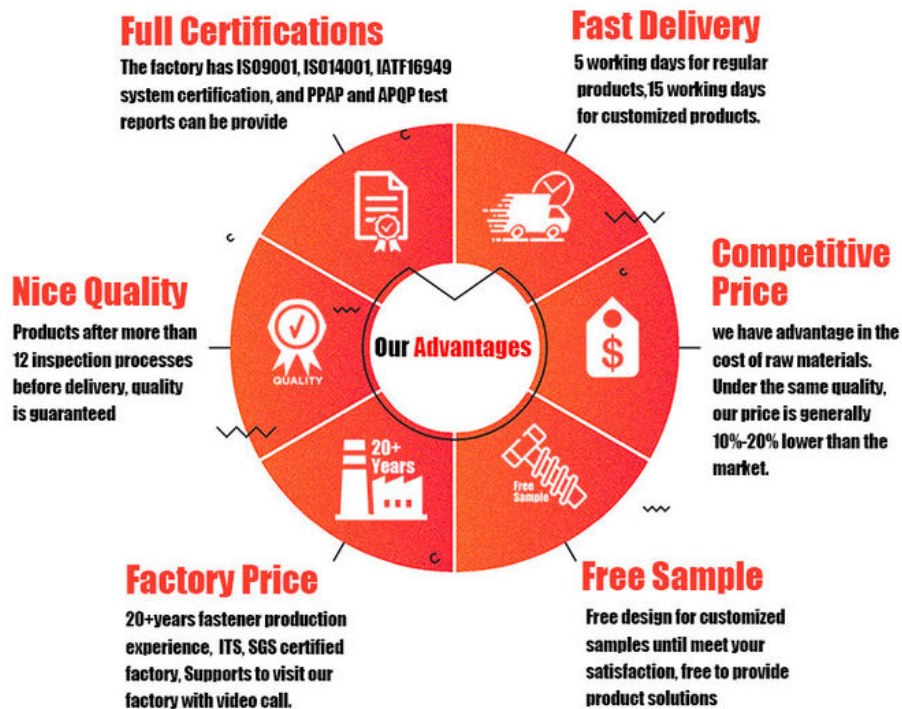
More Images



Product Description

Flat Head Thin Cylindrical Phillips Spotting Stepped Screw With ISO9001 Certificate

FINEX | Fine and Express FASTENERS



Product Overview

Our Flat Head Thin Cylindrical Phillips Spotting Stepped Screw is engineered for applications requiring meticulous alignment, compact design, and reliable fastening. Featuring a flat head for flush installation, a Phillips drive for secure torque transfer, and a stepped cylindrical design for precise component positioning, this screw is ISO9001 certified, ensuring unmatched quality and consistency. Ideal for electronics, optics, medical devices, and precision machinery.

Key Features

ISO9001 Certified Quality

Guaranteed Precision: Manufactured under strict quality control standards for dimensional accuracy and performance.

Traceability: Full material and production documentation provided.

Flat Head Thin Cylindrical Design

Low-Profile Installation: Flat head sits flush with surfaces, ideal for compact or aesthetic-critical assemblies.

Slim Cylindrical Shaft: Optimized for tight spaces while maintaining structural integrity.

Phillips Drive (PH1/PH2)

Tool Compatibility: Works with standard Phillips screwdrivers or automated drivers.

Secure Torque Transfer: Reduced risk of cam-out during installation.

Stepped Shoulder Design

Precision Alignment: Stepped shoulder ensures accurate positioning of bearings, spacers, or optical components.

Reduced Friction: Smooth shoulder surface minimizes wear on mating parts.

Durable Material & Finish

Stainless Steel 304/316: Corrosion-resistant for harsh environments.

Alloy Steel (Grade 8.8): High tensile strength (800 MPa) for load-bearing applications.

Plain or Passivated Finish: Clean, non-reflective surface for sensitive applications.

FINEX | Fine and Express
FASTENERS    

[Click Here To Start Customizing](#)
Customizable Hole Shape



Pozi



Phillips



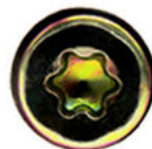
**Anti-theft
Triangle**



Slotted



Hex Socket



Torx



**Torx-internal
Tamper proof pin**



**H type
anti theft**



Tri-wing



**Two-Hole
Tamper proof**



**One way
anti theft**



**Square Slot
Combination**



**Phillips Slot
Combination**



**Slot 6 Lobe
Combination**



**Tri-wing internal
Tamper proof pin**





FINEX | Fine and Express
FASTENERS    

OEM **ODM**
ORIGINAL ORIGINAL
EQUIPMENT DESIGN
MANUFACTURER MANUFACTURER

What We Produce is Not Just a Screw. We Provide a Guarantee of Secure Fastening



Specification

More Detail Informations

Available Material

- 1.Stainless Steel: SS303, SS304, SS316, SS410, SS420;
- 2.Carbon steel: C1006,C1010,C1018,C1022,C1035K,C1045;
- 3.Brass: C3602,C3604,Hpb59,Hpb62,Hpb65,Hpb58,Hpb70 ;
- 4.Aluminum: Al6061, Al6063 etc
or as your requirements

| | |
|-------------------|--|
| Head type | CSK Head,Pan Head,Truss Head,Hexagon Head,Round Head,Oval Head,Button Head,Cap Head,Cheese Head,etc. |
| Hardness | Carbon Steel:HRC:28~35 ,HV450~700 Alloy Steel:HRC:32~39(grade10.9) HRC:39~44(grade12.9) |
| Finish | Zinc plated, Nickel plated, Bronze, Copper,Phosphate, Oxidation black, Passivation, Tin, Dacromet, Gold, Chrome, Silver, Phosphorization,Zinc-nickel alloy plated etc. |
| Sample Available | The sample is free of charge if we have the existing tooling,you only need to pay for the freight cost |
| Delivery time | Samples time 3-5 working days, Lead time 20-25 working days |
| Pricing Term | EXW Dongguan(FCA),FOB, CIF, CNF, DDU,etc. |
| Packing | Bulk in PE bag or Small boxes.then in carton .pallet |
| Payment term | TT (30% in advance as deposit, balance before delivery) , L/C, Western Union,PayPal etc |
| Management system | ISO9001:2015 |
| Certificate | ISO,ROHS |

Why Choose Us

Why Choose Us?

OEM/ODM Support: Full custom packaging, branding, and documentation.

Quality Assurance: ISO 9001-certified with full material traceability and testing (salt-spray, torque, tensile).

Flexible MOQs: Prototype batches to large-scale production.

Fast Turnaround: 10–15 days for standard orders; expedited options available.

NO1.Drive compariason



NO2.Torque comparison



NO3.Screw Plating Comparison



Our screws: good finish, clear thread, even coating, bright appearance.

VS



Bad screws on the market: bad finish, uneven coating, thread is oxidized, the finish is blacked.

NO4.Screw Material Comparison



Our screws: we use quality carbon steel material, Chemical Element content in Steel meets the requirement of ISO standard, they won't be broken after 90° bent, high strength, good toughness requirement of ISO

VS



Bad screws on the market: bad carbon steel material, Chemical Element content in Steel doesn't meet the requirement of ISO standard, they will be easily broken after 90° bent, high strength and bad toughness.

NO5.Mechanical Properties comparison



Our self tapping screws: our screws have high strength, enough hardness, good toughness after heat treated, they won't be broken after bent.

VS



Bad screws on the market: they have high strength and bad toughness, thread will easily be broken, because the screws are not tempered.

NO6. Corrosion Resistance Comparison of SUS304



Our SUS304 screws: nickel chemical element content won't be less than 8, meets ISO requirement. The finish won't be oxidized, rusted and has good anti-corrosion capacity standard, they won't be broken after 90° bent, high strength, good toughness.

VS



SUS304 screws on the market: nickel chemical element content will be less than 8, even doesn't have nickel plated, which doesn't meet ISO requirement. The finish will be oxidized, rusted and lose anti-corrosion capacity.

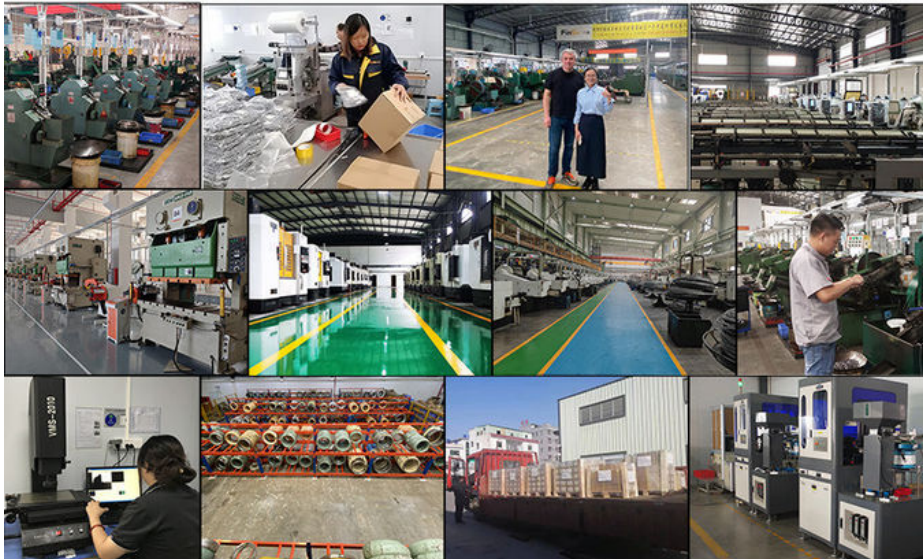
FINEX

— 20 YEARS
Non-standard Fasteners
Customization Experience

+86-13527934468

alianchen@finexfastener.com

Contact us



Partners and Exhibitions





FAQ

Q1: What is your main products and material supply?

A1: Our main products are Electronic screws, Sems screws, Tapping screws, Chicago screws, Shoulder screws etc. Special Non-standard studs, Turning parts and High-end precision complex CNC Machining parts etc.

A2: Carbon Steel, Alloy Steel, Aluminum alloy, Stainless Steel, Brass, Copper, Titanium alloy or according to your requirement.

Q2: When can I get the price?

A: We usually offer you a quotation within 12 hours, and the special offer is not more than 24 hours. Any urgent cases, please contact us directly by phone or send email to us.

Q3: What about the transportation and delivery date?

A: If the weight of goods more than 80kg, Normally we use shipment to transport the orders. It is about 20-30 days. If the weight of goods less than 80kg, or there are urgent, we can send the goods via air express, It is 3~5 days.

Q4: What's your packing? What to do in case of damaged goods during transport?

A1: Our Normal packing is bulking in Cartons, less than 20 kgs/carton, 48 cartons / pallet. We also can pack products according to your requirement.

A2: To avoid any subsequent trouble regarding quality issue, we suggest you check the goods once you receive them. If there is any transport damaged or quality issue, don't forget take the detail pictures and contact us as soon as possible, we will properly handle it to make sure your loss to reduce to the smallest.

Q5: Can I get discounts?

A: Yes, for big order, frequent customers, we give reasonable discounts.

Q6: Do you have enough capacity?

A: Our production equipment is a new imported equipment. We have a group of skilled workers who have been working for more than 10 years. Their production experience is very rich and their skills are very skilled. The screws can be 30 million pcs/month. We have sufficient funds to ensure the normal operation of the factory.



Finexpress Precision Manufacturing (dongguan) Co., Ltd



+86-13527934468



alianchen@finexfastener.com



metalscrewfastener.com

Building 2, No. 129 Xinmalian Xinma Road, Dalang Town, Dongguan, Guangdong, China