

M4*11 Golden Paint Triangle Security Screw With Truss Head And RoHs Certificate

Our Product Introduction

for more products please visit us on metalscrewfastener.com

Basic Information

- Place of Origin: Guangdong, China
- Brand Name: FinExpress
- Model Number: FinExpress Screw0040
- Minimum Order Quantity: 30000
- Price: \$0.08/pieces 10000-29999 pieces



Product Specification

- Finish: ZINC, Plain, ZINC PLATED, Stainless Steel, Carbon Steel, Alloy Steel
- Material: Stainless Steel, Steel, Stainless Steel, Carbon Steel, Alloy Steel
- Measurement System: INCH
- Head Style: Pan, Truss, Flat, HEX
- Standard: Non-standard
- Product Name: Tamper Proof Anti Theft Security Screws
- MOQ: 1 Piece In Stock, 30,000 Pcs Customized
- Package: PE+Carton +Pallet
- Delivery Time: In Stock 5~7 Working Days, Customized 15~25 Working Days
- Service: OEM
- Length: 15mm~180mm
- Certificate: ISO9001:2015, RoHs
- Highlight: Golden Paint Security Screw,



More Images



Product Description

Product Description

NON-STANDARD FASTENER CUSTOMIZATION
OEM&ODM SERVICE
RELIABLE CUSTOM FASTENER SUPPLIER



Fastes Delivery
7~10Working Day

Lifetime after-
sales service

15 years non-standard
customization

Free Sample
Customized



Our Product Introduction

for more products please visit us on metalscrewfastener.com





Flat



Oval



Pan



Truss



Round



Hex



Hex Washer



Slotted Hex Washer

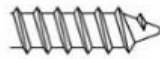


Socket Cap

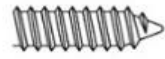


Button

Screw Thread Types



Type A
Metal Sheet Thread



Type AB
Metal Sheet Thread



Flat Point



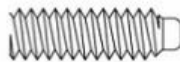
Chamfer Point



Type 25
Metal Sheet Thread



Type HILO
Metal Sheet Thread



DOG Point



Sharp Point



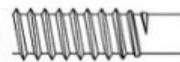
Type B
Metal Sheet Thread



Type TEK 2
Self Drilling Screw



BP Point



DOG Point



Phillips II



Torx external (6-lobe)



Torx internal (6-lobe)



Torx - internal tamper proof pin (6-lobe)



Frearson



Clutch



Phillips



Phillips/Slot Combination (Combo)



Spinner Drilled Tamper Proof



Spinner Slotted Tamper Proof



Square Slot Combination



Fluted Socket 4 flutes



Fluted Socket 6 flutes



MaxTorq



Tri-Wing



Square Socket (Robertson)



Slotted



Slotted Tamper Proof (One Way)



Phillips Square Sued Drive



5 Node Security



Hex Socket Allen Head Internal



Hexagon External



Hexagon Internal Tamper proof



Slotted 6 Lobe Combo



Quadrev



Phillips Hex Head



7 Node Security



Post Drive Phillips 14

Main Products



screw



Lathe Accessories



Bolt



Nut



Stamping Parts



CNC Machining

Specification

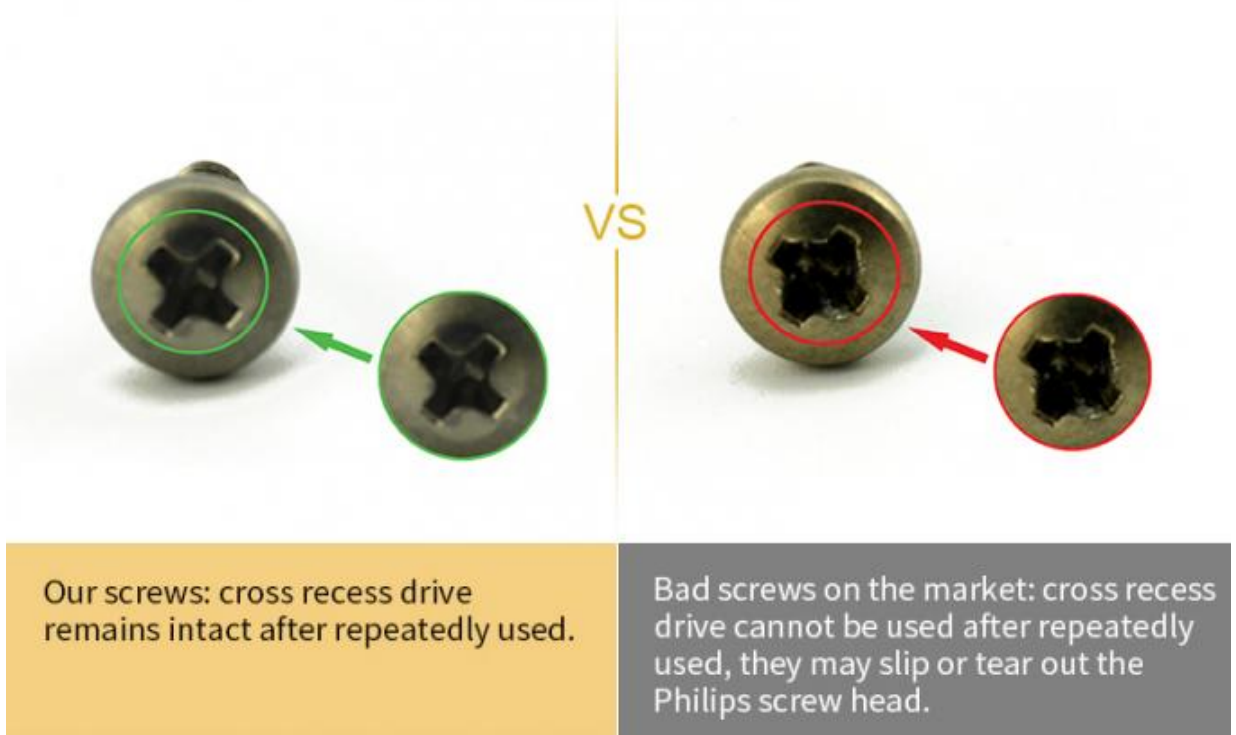
More Detail Informations

Available Material	<p>1.Stainless Steel: SS303, SS304, SS316, SS410, SS420; 2.Carbon steel: C1006,C1010,C1018,C1022,C1035K,C1045; 3.Brass: C3602,C3604,Hpb59,Hpb62,Hpb65,Hpb58,Hpb70 ; 4.Aluminum: Al6061, Al6063 etc or as your requirements</p>
Head type	CSK Head,Pan Head,Truss Head,Hexagon Head,Round Head,Oval Head,Button Head,Cap Head,Cheese Head,etc.
Hardness	Carbon Steel:HRC:28~35 ,HV450~700 Alloy Steel:HRC:32~39(grade10.9) HRC:39~44(grade12.9)
Finish	Zinc plated, Nickel plated, Bronze, Copper,Phosphate, Oxidation black, Passivation, Tin, Dacromet, Gold, Chrome, Silver, Phosphorization,Zinc-nickel alloy plated etc.
Sample Available	The sample is free of charge if we have the existing tooling,you only need to pay for the freight cost
Delivery time	Samples time 3-5 working days, Lead time 20-25 working days
Pricing Term	EXW Dongguan(FCA),FOB, CIF, CNF, DDU,etc.
Packing	Bulk in PE bag or Small boxes.then in carton .pallet
Payment term	TT (30% in advance as deposit, balance before delivery) , L/C, Western Union,PayPal etc
Management system	ISO9001:2015
Certificate	ISO,ROHS

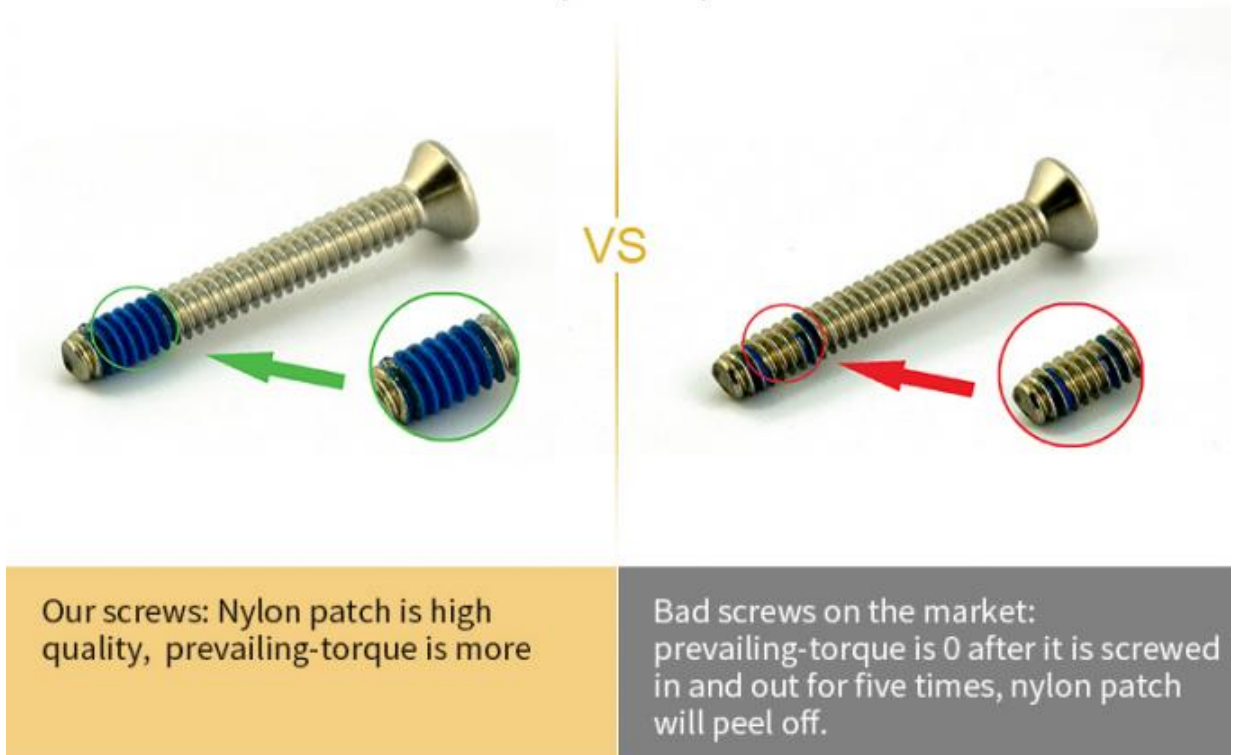
Why Choose Us

Why choose us?

NO1.Drive comparison



NO2.Torque Comparison



NO3.Screw Plating Comparison



VS



Our screws: good finish, clear thread, even coating, bright appearance.

Bad screws on the market: bad finish, uneven coating, thread is oxidized, the finish is blacked.

NO4.Screw Material Comparison



VS



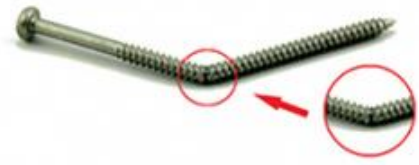
Our screws: we use quality carbon steel material, Chemical Element content in Steel meets the requirement of ISO standard, they won't be broken after 90° bent, high strength.

Bad screws : bad carbon steel material, Chemical Element content in Steel doesn't meet the requirement of ISO standard, they will be easily broken after 90° bent, high strength.

NO5.Mechanical Properties Comparison



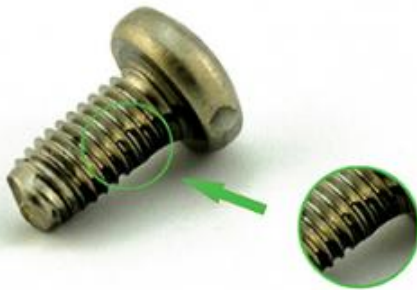
VS



Our self tapping screws: our screws have high strength, enough hardness, good toughness after heat treated, they won't be broken after

Bad screws on the market: they have high strength and bad toughness, thread will easily be broken, because the screws are not

NO6.Screw Material Comparison



VS



Our SUS304 screws: nickel chemical element content won't be less than 8, meets ISO requirement. The finish won't be oxidized, rusted and has good anti-corrosion capacity.

Bad screws : nickel chemical element content will be less than 8, even doesn't have nickel plated, which doesn't meet ISO requirement.

Buyers praise

Supplier Service: **Very Satisfied** (5 stars) On-time Shipment: **Very Satisfied** (5 stars)



Factory price stainless/carbon steel customiza...

★★★★★

Fast shipping and good communication.



Hex Nut

★★★★★

Fast shipping and good communication.

Supplier Service: **Very Satisfied** (5 stars) On-time Shipment: **Very Satisfied** (5 stars)



Black Plastic head bolt

★★★★★

fast service and good quality



Estelle Xiao
Dongguan Zhonggu Hardware Co., Ltd.

28 Apr 2020

Thank you very much for your good comment, my friend. we will keep doing. Your satisfaction is our goal .

Order No.: 16882094001022951

Time Created: 2019-09-10 06:31

Joshua Somo, United States

Supplier Service: **Very Satisfied** (5 stars) On-time Shipment: **Very Satisfied** (5 stars)



Dongguan Stainless Steel Pan Head machine s...

★★★★★

perfect description and i received exactly what i was expecting

[Reply](#)



PM2*4 Color Zinc Cross Pan head Micro Electr...

★★★★★

perfect description and i received exactly what i was expecting

[Reply](#)

Supplier Service: **Very Satisfied** (5 stars) On-time Shipment: **Very Satisfied** (5 stars)



Environmentally Friendly Black Zinc Machine T...

★★★★★

good quality screws

Supplier Service: **Very Satisfied** (5 stars) On-time Shipment: **Very Satisfied** (5 stars)



Wholesale black zinc plated truss head thread formin...

★★★★★

Fantastic supplier. They helped me find just what i was looking for.

Company Profile

Company Profile

FinExpress Precision Manufacturing (Dongguan) Co., Ltd., has a registered capital of 10 million RMB and an area of nearly 3500 square meters.

Our company specializes in the production and sales of various precision hardware fasteners, including screws, bolts, nuts, automatic car parts, CNC car parts, multi-stroke special-shaped parts, metal stamping parts, etc.

Our company has passed ISO9001:2015, 14001:2015.

IATF16949:2016 international quality system certification.



Factory



Screw threading machine



Multi-functional cold molding machine



Screw optical image screening machine



CNC Lathes



CNC Machining Center



Automatic lathes

Quality Inspection

Quality Inspection



1.Raw material(IQC)



2.Heading



3.IPQC



4.Theading



5.IPQC



6.Hardness Testing



7.Salt spray test



8.FQC for Size and Mechanical properties



9.FQC by Manual selection



10.Packing



11.Carton strong packing



12.Pallet packing

FinEx® 凡易

OVERSEAS WAREHOUSE

Germany dispatch to most of EU countries, 48 hours to ship goods via DHL/UPS... within 5-7 workdays to reach India dispatch to 1.2.3.4 area, 48 hours to ship goods, within 5-15 workdays to reach.



FAQ

Q1: What is your main products and material supply?

A1: Our main products are Electronic screws, Sems screws, Tapping screws, Chicago screws, Shoulder screws etc. Special Non-standard studs, Turning parts and High-end precision complex CNC Machining parts etc.

A2: Carbon Steel, Alloy Steel, Aluminum alloy, Stainless Steel, Brass, Copper, Titanium alloy or according to your requirement.

Q2: When can I get the price?

A: We usually offer you a quotation within 12 hours, and the special offer is not more than 24 hours. Any urgent cases, please contact us directly by phone or send email to us.

Q3: What about the transportation and delivery date?

A: If the weight of goods more than 80kg, Normally we use shipment to transport the orders. It is about 20-30 days. If the weight of goods less than 80kg, or there are urgent, we can send the goods via air express, It is 3-5 days.

Q4: What's your packing? What to do in case of damaged goods during transport?

A1: Our Normal packing is bulking in Cartons, less than 20 kgs/carton, 48 cartons / pallet. We also can pack products according to your requirement.

A2: To avoid any subsequent trouble regarding quality issue, we suggest you check the goods once you receive them. If there is any transport damaged or quality issue, don't forget take the detail pictures and contact us as soon as possible, we will properly handle it to make sure your loss to reduce to the smallest.

Q5: Can I get discounts?

A: Yes, for big order, frequent customers, we give reasonable discounts.

Q6: Do you have enough capacity?

A: Our production equipment is a new imported equipment. We have a group of skilled workers who have been working for more than 10 years. Their production experience is very rich and their skills are very skilled. The screws can be 30 million pcs/month. We have sufficient funds to ensure the normal operation of the factory.

