

Customized Sealing Thread Locking Screws Nylon Patch Specialised Screws

Our Product Introduction

Basic Information

- Place of Origin: Guangdong, China
- Brand Name: FinExpress
- Model Number: FINEX Nylon Patch Screws
- Minimum Order Quantity: 30000
- Price: \$0.10/pieces 1000-49999 pieces
- Packaging Details: 1.1000pcs / plastic bag,20kgs/ carton ,then put on the wood pallet ,
2.Carton size:28cm*18cm*13cm,
3.Wood pallet size:118cm*113cm,Weight:700~800Kg
Bulk:0.8 cubic
4.The weight of 20 FT Container:20~25 Tons
5,As your requirements
- Delivery Time: 7~15 Working Day
- Payment Terms: T/T, L/C, D/A, D/P
- Supply Ability: 500000000 Piece/Pieces per Week

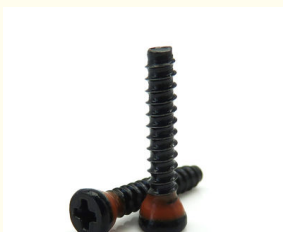


Product Specification

- Finish: Plain, Black Oxide, ZINC PLATED
- Material: Stainless Steel, Steel
- Measurement System: INCH, Metric
- Head Style: Pan, Truss, Flat, HEX
- Standard: ISO, DIN, Non-standard
- Product Name: Nylon Patch Screws
- MOQ: 1 Piece In Stock, 30,000 Pcs Customized
- Package: Small Packing+Carton Packing+Pallet
- Delivery Time: In Stock 5~7 Working Days, Customized 15~25 Working Days
- Service: OEM ODM Custom Service
- Length: 1mm~500mm
- Certificate: ISO9001:2015, RoHs
- Highlight: Sealing Thread Locking Screws,
Nylon Patch Specialised Screws,
Sealing Thread Nylon Patch Thread Locker



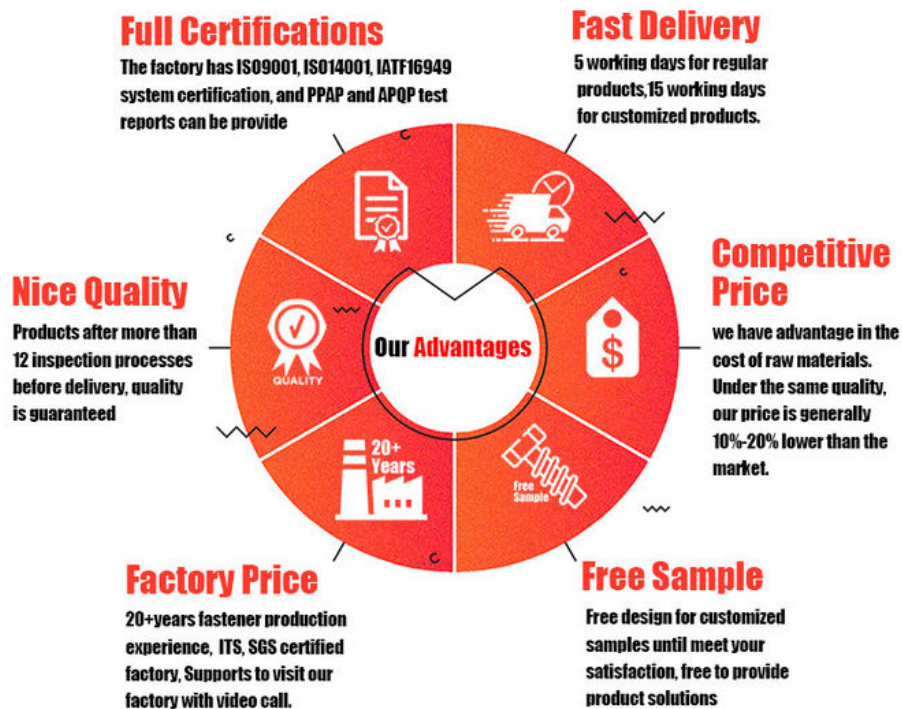
More Images



Product Description

Customized Sealing Thread Locking Screws Nylon Patch Specialised Screws

FINEX | Fine and Express FASTENERS



Product Overview

Secure critical assemblies with our **Customized Sealing Thread Locking Screws**, engineered to prevent loosening under extreme vibration and environmental stress. Featuring a pre-applied nylon patch for permanent thread locking, these screws combine corrosion-resistant materials, precise sealing, and customizable specifications to meet the demands of automotive, aerospace, and industrial machinery. Ideal for applications requiring tamper-proof, leak-resistant fastening in harsh conditions.

Key Features

Nylon Thread-Locking Patch

Vibration Resistance: Pre-applied nylon patch fills thread gaps, creating a permanent bond that prevents loosening.

Sealing Properties: Blocks moisture, dust, and chemicals, ideal for outdoor or submerged environments.



Corrosion-Resistant Materials

Stainless Steel (304/316): Withstands saltwater, humidity, and chemicals.

Alloy Steel (Grade 8.8/10.9): Zinc-plated or Dacromet®-coated for enhanced durability.

Customizable Specifications

Sizes: M3–M20 (metric) / #4–¾" (imperial).

Threads: Machine screw, self-tapping, or custom pitch.

Head Styles: Hex, pan, flat, or countersunk.

High-Temperature Performance

Nylon Patch Stability: Retains locking properties from **-40°F to 300°F** (-40°C to 149°C).

Global Compliance

ROHS, REACH, ISO 9001: Certified for safety, quality, and environmental standards.

Technical Specifications

| Attribute | Details |
|-------------------|--|
| Material | Stainless Steel (304/316), Alloy Steel (Grade 8.8/10.9) |
| Locking Mechanism | Pre-Applied Nylon Patch (Blue or Red for Permanent/Removable Bond) |
| Thread Type | Metric/Imperial |
| Diameter | M3–M20 (Metric) / #4–¾" (Imperial) |
| Length | 6mm–200mm (Custom lengths up to 300mm) |
| Head Styles | Hex, Pan, Flat, Countersunk |
| Drive Types | Phillips, Torx, Hex Socket, or Slotted |
| Coating Options | Zinc, Dacromet®, Black Oxide, or Passivated |
| Temperature Range | -40°F to 300°F (-40°C to 149°C) |
| Certifications | ISO 9001, ASTM F837, ROHS |
| Packaging | Bulk boxes, anti-tarnish bags, or OEM-specific kits. |

Applications

Automotive: Engine mounts, transmission systems, and chassis components.

Aerospace: Secure avionics, panels, and structural assemblies under vibration.

Industrial Machinery: Pumps, compressors, and conveyor systems in high-stress environments.

Electronics: Tamper-proof fastening for sensitive equipment and enclosures.

Marine: Submerged or saltwater-exposed fixtures like propellers and hatches.



Pozi



Phillips



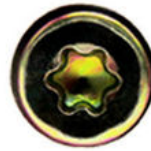
**Anti-theft
Triangle**



Slotted



Hex Socket



Torx



**Torx-internal
Tamper proof pin**



**H type
anti theft**



Tri-wing



**Two-Hole
Tamper proof**



**One way
anti theft**



**Square Slot
Combination**



**Phillips Slot
Combination**



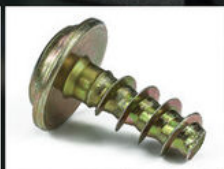
**Slot 6 Lobe
Combination**



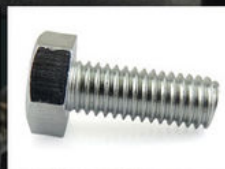
**Tri-wing internal
Tamper proof pin**



Blue Zinc



Yellow Zinc



White Zinc



Black Zinc



Nickel Plated



Black Oxide



Anodizing



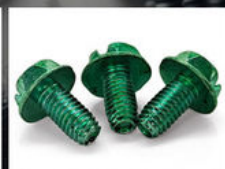
Dacromet



**Black
Electrophoresis**



Antique Bronze



Green



Baking Finish



What We Produce is Not Just a Screw. We Provide a Guarantee of Secure Fastening

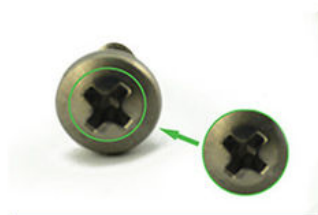


Specification

| | More Detail Informations |
|--------------------|---|
| Available Material | 1.Stainless Steel: SS303, SS304, SS316, SS410, SS420; 2.Carbon steel: C1006,C1010,C1018,C1022,C1035K,C1045; 3.Brass: C3602,C3604,Hpb59,Hpb62,Hpb65,Hpb58,Hpb70 ; 4.Aluminum: Al6061, Al6063 etc or as your requirements |
| Head type | CSK Head,Pan Head,Truss Head,Hexagon Head,Round Head,Oval Head,Button Head,Cap Head,Cheese Head,etc. |
| Hardness | Carbon Steel:HRC:28~35 ,HV450~700 Alloy Steel:HRC:32~39(grade10.9) HRC:39~44(grade12.9) |
| Finish | Zinc plated, Nickel plated, Bronze, Copper,Phosphate, Oxidation black, Passivation, Tin, Dacromet, Gold, Chrome, Silver, Phosphorization,Zinc-nickel alloy plated etc. |
| Sample Available | The sample is free of charge if we have the existing tooling,you only need to pay for the freight cost |
| Delivery time | Samples time 3-5 working days, Lead time 20-25 working days |
| Pricing Term | EXW Dongguan(FCA),FOB, CIF, CNF, DDU,etc. |
| Packing | Bulk in PE bag or Small boxes.then in carton .pallet |
| Payment term | TT (30% in advance as deposit, balance before delivery) , L/C, Western Union,PayPal etc |
| Management system | ISO9001:2015 |
| Certificate | ISO,ROHS |

Why Choose Us

NO1.Drive compariason



Our screws: cross recess drive remains intact after repeatedly used.

VS



Bad screws on the market: cross recess drive cannot be used after repeatedly used, they may slip or tear out the Philips screw head.

NO2.Torque comparison



Our screws: Nylon patch is high quality, prevailing-torque is more

VS



Bad screws on the market: prevailing-torque is 0 after it is screwed in and out for five times, nylon patch will peel off.

NO3.Screw Plating Comparison



Our screws: good finish, clear thread, even coating, bright appearance.

VS



Bad screws on the market: bad finish, uneven coating, thread is oxidized, the finish is blacked.

NO4.Screw Material Comparison



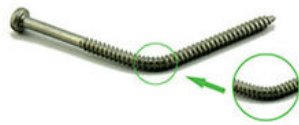
Our screws: we use quality carbon steel material, Chemical Element content in Steel meets the requirement of ISO standard, they won't be broken after 90° bent, high strength, good toughness.requirement of ISO

VS



Bad screws on the market: bad carbon steel material, Chemical Element content in Steel doesn't meet the requirement of ISO standard, they will be easily broken after 90° bent, high strength and bad toughness.

NO5.Mechanical Properties comparison



Our self tapping screws: our screws have high strength, enough hardness, good toughness after heat treated, they won't be broken after bent.

VS



Bad screws on the market: they have high strength and bad toughness, thread will easily be broken, because the screws are not tempered.

NO6. Corrosion Resistance Comparison of SUS304



Our SUS304 screws: nickel chemical element content won't be less than 8, meets ISO requirement. The finish won't be oxidized, rusted and has good anti-corrosion capacity. standard, they won't be broken after 90° bent, high strength, good toughness.

VS



SUS304 screws on the market: nickel chemical element content will be less than 8, even doesn't have nickel plated, which doesn't meet ISO requirement. The finish will be oxidized, rusted and lose anti-corrosion capacity.

Company Profile

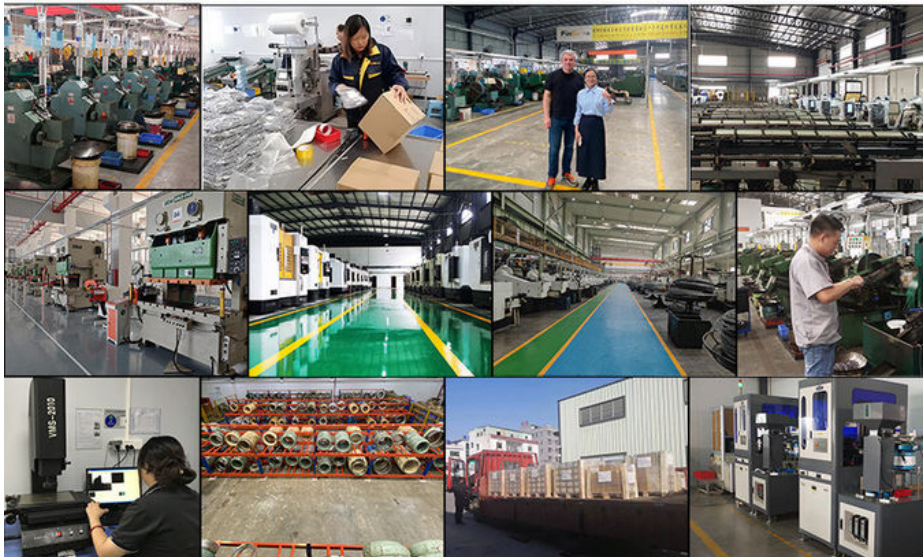
FINEX

— 20 YEARS
Non-standard Fasteners
Customization Experience

+86-13527934468

alianchen@finexfastener.com

Contact us



Partners and Exhibitions



Raw Material (IQC)



Head Size (IPQC)



Thread Size (IPQC)



Spot check on surface treatment



Image Measuring Instrument



Hardness Test



ROHS Test



Salt Spray Test



Tensile Force Test



Touque Test



Screw Optical Screener



FQC by Manual Selection

FAQ

Q1: What is your main products and material supply?

A1: Our main products are Electronic screws, Sems screws, Tapping screws, Chicago screws, Shoulder screws etc. Special Non-standard studs, Turning parts and High-end precision complex CNC Machining parts etc.

A2: Carbon Steel, Alloy Steel, Aluminum alloy,Stainless Steel, Brass, Copper ,Titanium alloy or according to your requirement.

Q2: When can I get the price?

A: We usually offer you a quotation within 12 hours, and the special offer is not more than 24 hours.Any urgent cases, please contact us directly by phone or send email to us.

Q3: What about the transportation and delivery date?

A: If the weight of goods more than 80kg,Normally we use shipment to transprot the orders. It is about 20-30days . If the weight of goods less than 80kg,or there are urgent, we can send the goods via air express,It is 3~5 days.

Q4: What's your packing?What to do in case of damaged goods during transport?

A1: Our Normal packing is bulking in Cartons, less than 20 kgs/carton, 48 cartons / pallet. We also can pack products according to your requirement.

A2: To avoid any subsequent trouble regarding quality issue, we suggest you check the goods once you receive them. If there is any transport damaged or quality issue, don't forget take the detail pictures and contact us as soon as possible, we will properly handle it to make sure your loss to reduce to the smallest.

Q5: Can I get discounts?

A: Yes, for big order, frequent customers, we give reasonable discounts.

Q6: Do you have enough capacity?

A: Our production equipment is a new imported equipment. We have a group of skilled workers who have been working for more than 10 years. Their production experience is very rich and their skills are very skilled. The screws can be 30 million pcs/month. We have sufficient funds to ensure the normal operation of the factory.



Finexpress Precision Manufacturing (dongguan) Co., Ltd



+86-13527934468



alianchen@finexfastener.com



metalscrewfastener.com

Building 2, No. 129 Xinmalian Xinma Road, Dalang Town, Dongguan, Guangdong, China