

Customized Phillips Internal Pan Head Machine Screw With DIN Standard

Our Product Introduction

Basic Information

- Place of Origin: Guangdong, China
- Brand Name: FINEX
- Model Number: Special Thread Screws
- Minimum Order Quantity: 30000
- Price: \$0.05/pieces 1000-29999 pieces
- Packaging Details: 1.1000pcs / plastic bag,20kgs/ carton ,then put on the wood pallet ,
2.Carton size:28cm*18cm*13cm,
3.Wood pallet size:118cm*113cm,Weight:700~800Kg
Bulk:0.8 cubic
4.The weight of 20 FT Container:20~25 Tons
5,As your requirements
- Delivery Time: 7~15 Working Day
- Payment Terms: T/T, L/C, D/A, D/P
- Supply Ability: 500000000 Piece/Pieces per Week



Product Specification

- Finish: Plain, ZINC PLATED
- Material: Stainless Steel, Steel
- Measurement System: INCH, Metric
- Head Style: Pan
- Standard: DIN
- Certificate: ROHS
- Service: Customized OEM
- Packing: Plastic Bag+carton+pallet
- Delivery Time: In Stock 5~7 Working Days, Customized 15~25 Working Days
- Function: Fitting
- MOQ: 1 Piece In Stock, 30,000 Pcs Customized
- Highlight: **Phillips Pan Head Machine Screw, Customized Pan Head Machine Screw, Internal Pan Head Screw**



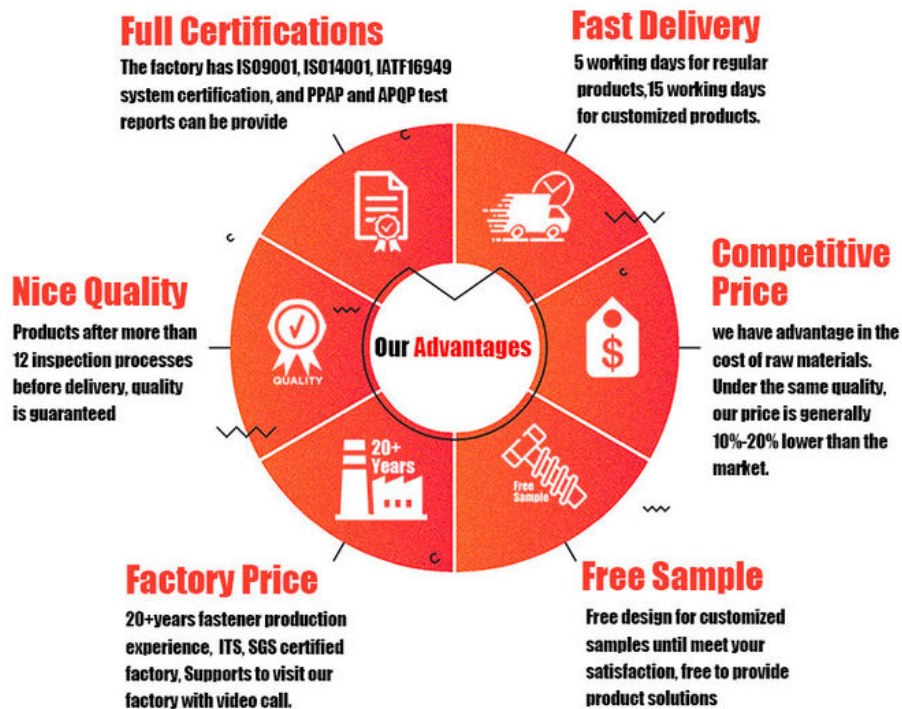
More Images



Product Description

Customized Phillips Internal Pan Head Machine Screw With DIN Standard

FINEX | Fine and Express FASTENERS



Product Overview

Achieve precision and reliability with our **Customized Phillips Internal Pan Head Machine Screws**, engineered to meet DIN standards for consistent quality and performance. Featuring a low-profile pan head and Phillips drive, these screws are ideal for applications requiring a flush finish, secure torque transfer, and resistance to vibration. Perfect for machinery, automotive, electronics, and industrial equipment, they combine versatility with industrial-grade durability.

Key Features

DIN Standard Compliance

DIN 7985/ISO 7045: Precision-machined to ensure dimensional accuracy, interchangeability, and load-bearing reliability.

Phillips Internal Drive (PH1–PH3)

Reduced Cam-Out: Ensures secure tool engagement and efficient torque application.

Wide Compatibility: Compatible with standard Phillips screwdrivers or power tools.

Pan Head Design

Low-Profile & Flush Fit: Rounded head with flat bearing surface distributes pressure evenly, minimizing surface damage.

Customizable Specifications

Material: Alloy steel, stainless steel (304/316), or brass.

Finish: Zinc-plated, nickel-plated, black oxide, or natural.

Size: M2–M12 diameters, 5mm–100mm lengths (custom dimensions available).

High-Strength & Corrosion Resistance

Grade 8.8/10.9: Heat-treated alloy steel for tensile strength up to **1,000 MPa**.

Stainless Steel Options: Ideal for marine, chemical, or outdoor environments.

Global Certifications

ROHS, ISO 9001, REACH: Compliant with international safety and environmental standards.

Technical Specifications

Attribute	Details
Material	Alloy Steel (Standard), Stainless Steel (304/316), Brass
Head Type	Pan Head (DIN 7985)
Drive Type	Phillips (PH1–PH3)
Diameter	M2–M12 (Metric) / #4–½" (Imperial)
Length	5mm–100mm (Custom lengths up to 200mm)
Thread Pitch	Coarse or Fine (Customizable)
Finish	Zinc-Plated (Standard), Black Oxide, Nickel, or Passivated
Tensile Strength	800–1,000 MPa (Alloy Steel)
Temperature Range	-40°F to 600°F (-40°C to 316°C)
Certifications	DIN 7985, ISO 7045, ROHS

Applications

Machinery Assembly: Secure motor housings, gears, and conveyor systems.

Automotive: Engine components, dashboard panels, and electrical systems.

Electronics: Fasten enclosures, PCB mounts, and heat sinks.

Construction: HVAC installations, metal frameworks, and roofing.

Marine: Corrosion-resistant fastening for docks and boat fixtures.



Pozi



Phillips



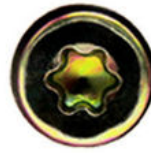
**Anti-theft
Triangle**



Slotted



Hex Socket



Torx



**Torx-internal
Tamper proof pin**



**H type
anti theft**



Tri-wing



**Two-Hole
Tamper proof**



**One way
anti theft**



**Square Slot
Combination**



**Phillips Slot
Combination**



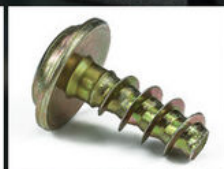
**Slot 6 Lobe
Combination**



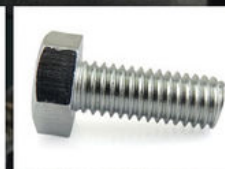
**Tri-wing internal
Tamper proof pin**



Blue Zinc



Yellow Zinc



White Zinc



Black Zinc



Nickel Plated



Black Oxide



Anodizing



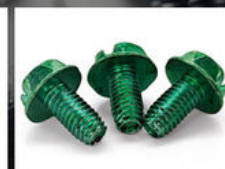
Dacromet



**Black
Electrophoresis**



Antique Bronze



Green



Baking Finish



What We Produce is Not Just a Screw. We Provide a Guarantee of Secure Fastening

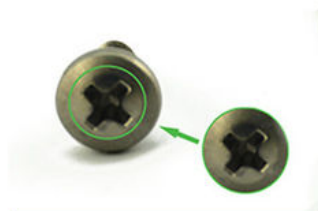


Specification

	More Detail Informations
Available Material	1.Stainless Steel: SS303, SS304, SS316, SS410, SS420; 2.Carbon steel: C1006,C1010,C1018,C1022,C1035K,C1045; 3.Brass: C3602,C3604,Hpb59,Hpb62,Hpb65,Hpb58,Hpb70 ; 4.Aluminum: Al6061, Al6063 etc or as your requirements
Head type	CSK Head,Pan Head,Truss Head,Hexagon Head,Round Head,Oval Head,Button Head,Cap Head,Cheese Head,etc.
Hardness	Carbon Steel:HRC:28~35 ,HV450~700 Alloy Steel:HRC:32~39(grade10.9) HRC:39~44(grade12.9)
Finish	Zinc plated, Nickel plated, Bronze, Copper,Phosphate, Oxidation black, Passivation, Tin, Dacromet, Gold, Chrome, Silver, Phosphorization,Zinc-nickel alloy plated etc.
Sample Available	The sample is free of charge if we have the existing tooling,you only need to pay for the freight cost
Delivery time	Samples time 3-5 working days, Lead time 20-25 working days
Pricing Term	EXW Dongguan(FCA),FOB, CIF, CNF, DDU,etc.
Packing	Bulk in PE bag or Small boxes.then in carton .pallet
Payment term	TT (30% in advance as deposit, balance before delivery) , L/C, Western Union,PayPal etc
Management system	ISO9001:2015
Certificate	ISO,ROHS

Why Choose Us

NO1.Drive compariason



Our screws: cross recess drive remains intact after repeatedly used.

VS



Bad screws on the market: cross recess drive cannot be used after repeatedly used, they may slip or tear out the Philips screw head.

NO2.Torque comparison



Our screws: Nylon patch is high quality, prevailing-torque is more

VS



Bad screws on the market: prevailing-torque is 0 after it is screwed in and out for five times, nylon patch will peel off.

NO3.Screw Plating Comparison



Our screws: good finish, clear thread, even coating, bright appearance.

VS



Bad screws on the market: bad finish, uneven coating, thread is oxidized, the finish is blacked.

NO4.Screw Material Comparison



Our screws: we use quality carbon steel material, Chemical Element content in Steel meets the requirement of ISO standard, they won't be broken after 90° bent, high strength, good toughness.requirement of ISO

VS



Bad screws on the market: bad carbon steel material, Chemical Element content in Steel doesn't meet the requirement of ISO standard, they will be easily broken after 90° bent, high strength and bad toughness.

NO5.Mechanical Properties comparison



VS



Our self tapping screws: our screws have high strength, enough hardness, good toughness after heat treated, they won't be broken after bent.

Bad screws on the market: they have high strength and bad toughness, thread will easily be broken, because the screws are not tempered.

NO6. Corrosion Resistance Comparison of SUS304



VS



Our SUS304 screws: nickel chemical element content won't be less than 8, meets ISO requirement. The finish won't be oxidized, rusted and has good anti-corrosion capacity. standard, they won't be broken after 90° bent, high strength, good toughness.

SUS304 screws on the market: nickel chemical element content will be less than 8, even doesn't have nickel plated, which doesn't meet ISO requirement. The finish will be oxidized, rusted and lose anti-corrosion capacity.

Company Profile

FINEX

— 20 YEARS
Non-standard Fasteners
Customization Experience

+86-13527934468

alianchen@finexfastener.com

Contact us



Partners and Exhibitions



Raw Material (IQC)



Head Size (IPQC)



Thread Size (IPQC)



Spot check on surface treatment



Image Measuring Instrument



Hardness Test



ROHS Test



Salt Spray Test



Tensile Force Test



Touque Test



Screw Optical Screener



FQC by Manual Selection

FAQ

Q1: What is your main products and material supply?

A1: Our main products are Electronic screws, Sems screws, Tapping screws, Chicago screws, Shoulder screws etc. Special Non-standard studs, Turning parts and High-end precision complex CNC Machining parts etc.

A2: Carbon Steel, Alloy Steel, Aluminum alloy,Stainless Steel, Brass, Copper ,Titanium alloy or according to your requirement.

Q2: When can I get the price?

A: We usually offer you a quotation within 12 hours, and the special offer is not more than 24 hours.Any urgent cases, please contact us directly by phone or send email to us.

Q3: What about the transportation and delivery date?

A: If the weight of goods more than 80kg,Normally we use shipment to transprot the orders. It is about 20-30days . If the weight of goods less than 80kg,or there are urgent, we can send the goods via air express,It is 3~5 days.

Q4: What's your packing?What to do in case of damaged goods during transport?

A1: Our Normal packing is bulking in Cartons, less than 20 kgs/carton, 48 cartons / pallet. We also can pack products according to your requirement.

A2: To avoid any subsequent trouble regarding quality issue, we suggest you check the goods once you receive them. If there is any transport damaged or quality issue, don't forget take the detail pictures and contact us as soon as possible, we will properly handle it to make sure your loss to reduce to the smallest.

Q5: Can I get discounts?

A: Yes, for big order, frequent customers, we give reasonable discounts.

Q6: Do you have enough capacity?

A: Our production equipment is a new imported equipment. We have a group of skilled workers who have been working for more than 10 years. Their production experience is very rich and their skills are very skilled. The screws can be 30 million pcs/month. We have sufficient funds to ensure the normal operation of the factory.



Finexpress Precision Manufacturing (dongguan) Co., Ltd



+86-13527934468



alianchen@finexfastener.com



metalscrewfastener.com

Building 2, No. 129 Xinmalian Xinma Road, Dalang Town, Dongguan, Guangdong, China