

## Flat Head M5\*1.8 PT Thread Forming Screw WN1411 Metal Screw Fastener

### Our Product Introduction

#### Basic Information

- Place of Origin: Guangdong, China
- Brand Name: FinExpress
- Model Number: PT thread Screw
- Minimum Order Quantity: 30000
- Price: \$0.01/pieces >=10000 pieces
- Packaging Details: 1.1000pcs / plastic bag,20kgs/ carton ,then put on the wood pallet ,  
2.Carton size:28cm\*18cm\*13cm,  
3.Wood pallet size:118cm\*113cm,Weight:700~800Kg  
Bulk:0.8 cubic  
4.The weight of 20 FT Container:20~25 Tons  
5,As your requirements
- Delivery Time: 7~15 Working Day
- Payment Terms: T/T, L/C, D/A, D/P
- Supply Ability: 500000000 Piece/Pieces per Week



#### Product Specification

- Finish: ZINC PLATED
- Material: Stainless Steel, Steel
- Measurement System: Metric
- Head Style: Pan, Flat
- Standard: EJOT, Delta
- Material: Carbon Steel, stainless Steel, Brass, Aluminum Etc
- Finish: Zinc, Nickel Plated, black Oxide, HDG, chrome, dacromet, etc
- Standard: DIN, ANSI, SAEM, JIS, ISO, GB Or As Your Drawing
- Size: M1.6~M10 Or #2-56~1/2" or Be Customized
- Delivery: Within 10 Working Days.
- Advantage: Factory Outlet And Competitive Price
- Delivery Mode: By Air, by Sea Or By Express Such As EMS, UPS, TNT. etc



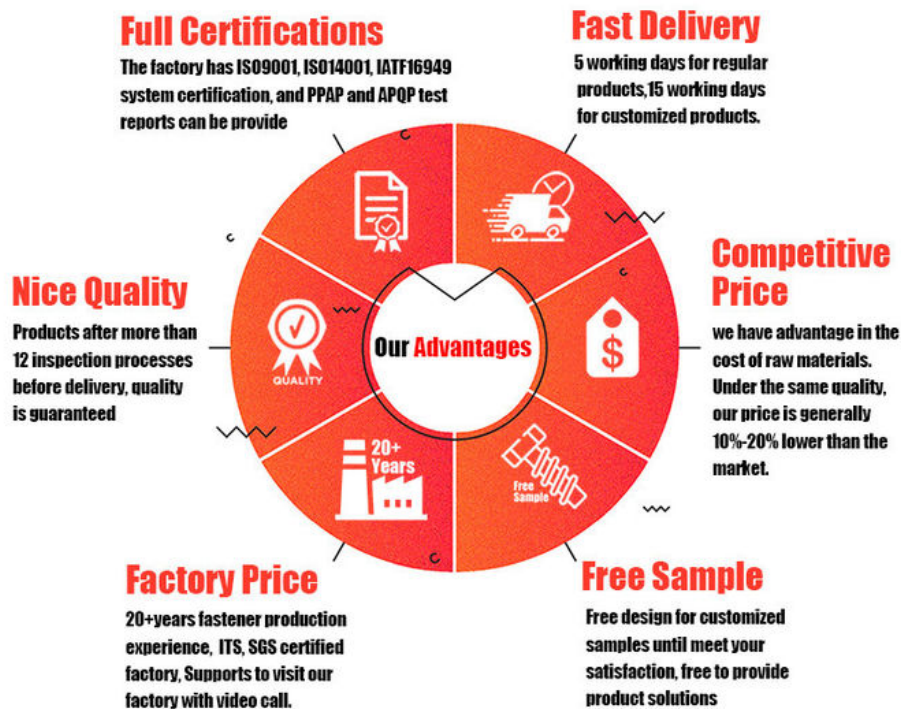
#### More Images



## Product Description

Flat Head M5\*1.8 PT Thread Forming Screw WN1411 Metal Screw Fastener

### FINEX | Fine and Express FASTENERS



## Product Overview

Achieve seamless, stripped-proof fastening in plastics and composite materials with our **Flat Head M5×1.8 PT Thread Forming Screw (WN1411)**. Designed for precision and durability, this self-tapping screw eliminates the need for pre-drilled threads, reducing assembly time and labor costs. Featuring a flat head for flush installations, corrosion-resistant coating, and vibration-resistant design, it is ideal for automotive, electronics, and industrial applications demanding reliability in harsh environments.

## Key Features

### Self-Tapping PT Thread Design

Sharp, Type T threads form precise grooves in plastics and thin metals, ensuring secure, long-lasting connections without pre-tapping.

### Flat Head Profile

Sits flush with surfaces for a smooth, snag-free finish, ideal for applications requiring a low-profile aesthetic.

### High-Strength Carbon Steel

Heat-treated carbon steel core provides exceptional tensile strength and fatigue resistance.

Corrosion-Resistant Coating

Zinc-plated finish protects against rust and oxidation, extending lifespan in humid or outdoor conditions.

Vibration-Resistant Performance

Thread-locking design prevents loosening under dynamic loads, ensuring stability in high-stress environments.

ROHS & ISO Compliance

Meets global safety and environmental standards for industrial and consumer use.

Technical Specifications

Attribute	Details
Material	Carbon Steel (Grade 1018)
Finish	Zinc Plated (Standard), Optional Black Oxide or Phosphate Coating
Thread Type	PT (Type T – Self-Forming)
Diameter	M5 (5mm)
Thread Pitch	1.8mm
Length	6mm–50mm (Custom Lengths Available)
Drive Type	Phillips (PH2)
Head Style	Flat Head (DIN 963)
Temperature Range	-40°F to 300°F (-40°C to 149°C)
Standards	DIN 7500, ISO 1481, ASTM F1647

Applications

**Automotive:** Secure interior trim, dashboards, and plastic engine components.

**Electronics:** Assemble plastic housings, PCB mounts, and connector panels.

**Consumer Appliances:** Fasten handles, panels, and lightweight metal/plastic parts.

**Industrial Machinery:** Vibration-resistant fastening in conveyor systems and equipment.

**Outdoor Equipment:** Weatherproof assemblies for garden tools and enclosures.

**FINEX** | Fine and Express

**FASTENERS**    

[Click Here To Start Customizing](#)

**Customizable Hole Shape**

				
<b>Pozi</b>	<b>Phillips</b>	<b>Anti-theft Triangle</b>	<b>Slotted</b>	<b>Hex Socket</b>
				
<b>Torx</b>	<b>Torx-internal Tamper proof pin</b>	<b>H type anti theft</b>	<b>Tri-wing</b>	<b>Two-Hole Tamper proof</b>
				
<b>One way anti theft</b>	<b>Square Slot Combination</b>	<b>Phillips Slot Combination</b>	<b>Slot 6 Lobe Combination</b>	<b>Tri-wing internal Tamper proof pin</b>







**What We Produce is Not Just a Screw. We Provide a Guarantee of Secure Fastening**



Specification

[More Detail Informations](#)

Available Material	1.Stainless Steel: SS303, SS304, SS316, SS410, SS420; 2. Carbon steel: C1006,C1010,C1018,C1022,C1035K,C1045; 3.Brass: C3602,C3604,Hpb59,Hpb62,Hpb65,Hpb58,Hpb70 ; 4.Aluminum: Al6061, Al6063 etc or as your requirements
Head type	CSK Head,Pan Head,Truss Head,Hexagon Head,Round Head,Oval Head,Button Head,Cap Head,Cheese Head,etc.
Hardness	Carbon Steel:HRC:28~35 ,HV450~700 Alloy Steel:HRC:32~39(grade10.9) HRC:39~44(grade12.9)
Finish	Zinc plated, Nickel plated, Bronze, Copper,Phosphate, Oxidation black, Passivation, Tin, Dacromet, Gold, Chrome, Silver, Phosphorization,Zinc-nickel alloy plated etc.
Sample Available	The sample is free of charge if we have the existing tooling,you only need to pay for the freight cost
Delivery time	Samples time 3-5 working days, Lead time 20-25 working days
Pricing Term	EXW Dongguan(FCA),FOB, CIF, CNF, DDU,etc.
Packing	Bulk in PE bag or Small boxes.then in carton .pallet
Payment term	TT (30% in advance as deposit, balance before delivery) , L/C, Western Union,PayPal etc
Management system	ISO9001:2015
Certificate	ISO,ROHS

## Why Choose Us

### NO1.Drive compariason



VS



### NO2.Torque comparison



VS





### NO3.Screw Plating Comparison



Our screws: good finish, clear thread, even coating, bright appearance.

VS



Bad screws on the market: bad finish, uneven coating, thread is oxidized, the finish is blacked.

### NO4.Screw Material Comparison



Our screws: we use quality carbon steel material, Chemical Element content in Steel meets the requirement of ISO standard, they won't be broken after 90° bent, high strength, good toughness requirement of ISO

VS



Bad screws on the market: bad carbon steel material, Chemical Element content in Steel doesn't meet the requirement of ISO standard, they will be easily broken after 90° bent, high strength and bad toughness.

### NO5.Mechanical Properties comparison



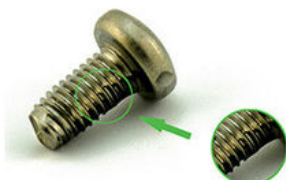
Our self tapping screws: our screws have high strength, enough hardness, good toughness after heat treated, they won't be broken after bent.

VS



Bad screws on the market: they have high strength and bad toughness, thread will easily be broken, because the screws are not tempered.

### NO6. Corrosion Resistance Comparison of SUS304



Our SUS304 screws: nickel chemical element content won't be less than 8, meets ISO requirement. The finish won't be oxidized, rusted and has good anti-corrosion capacity standard, they won't be broken after 90° bent, high strength, good toughness.

VS



SUS304 screws on the market: nickel chemical element content will be less than 8, even doesn't have nickel plated, which doesn't meet ISO requirement. The finish will be oxidized, rusted and lose anti-corrosion capacity.



# FINEX

— 20 YEARS  
Non-standard Fasteners  
Customization Experience

+86-13527934468

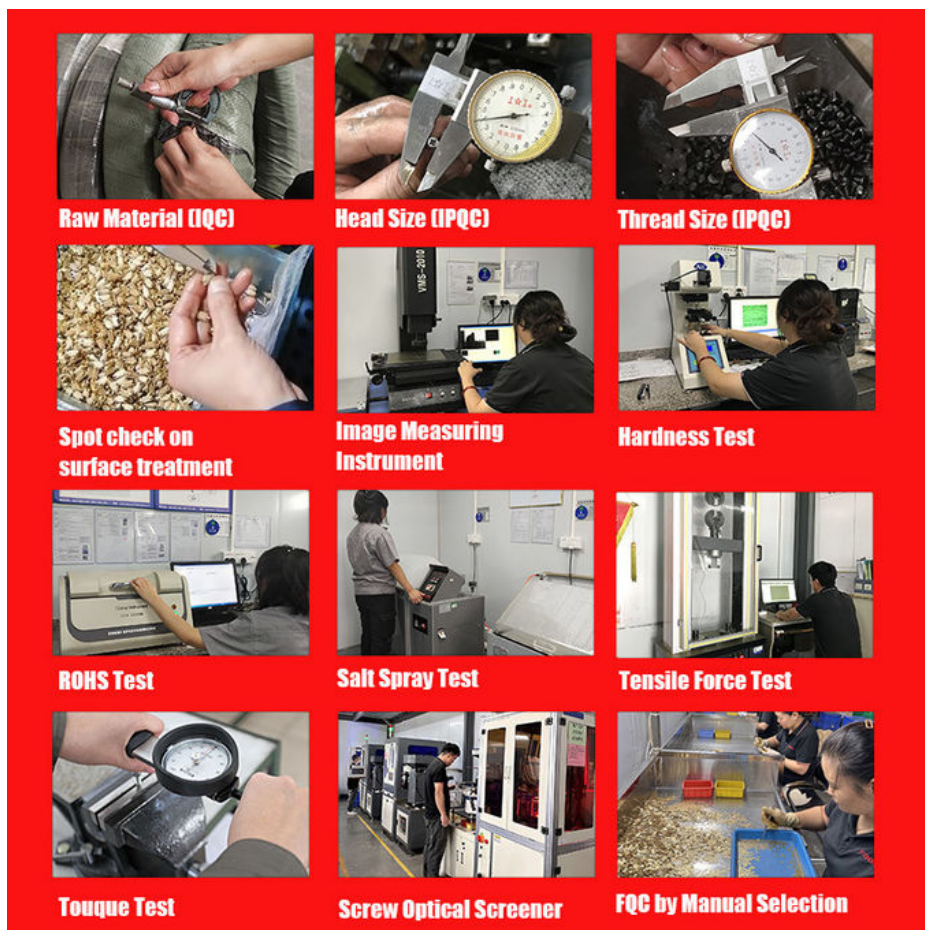
alianchen@finexfastener.com

Contact us



Partners and Exhibitions





## FAQ

**Q1: What is your main products and material supply?**

**A1:** Our main products are Electronic screws, Sems screws, Tapping screws, Chicago screws, Shoulder screws etc. Special Non-standard studs, Turning parts and High-end precision complex CNC Machining parts etc.

**A2:** Carbon Steel, Alloy Steel, Aluminum alloy, Stainless Steel, Brass, Copper, Titanium alloy or according to your requirement.

**Q2: When can I get the price?**

**A:** We usually offer you a quotation within 12 hours, and the special offer is not more than 24 hours. Any urgent cases, please contact us directly by phone or send email to us.

**Q3: What about the transportation and delivery date?**

**A:** If the weight of goods more than 80kg, Normally we use shipment to transport the orders. It is about 20-30 days. If the weight of goods less than 80kg, or there are urgent, we can send the goods via air express, It is 3~5 days.

**Q4: What's your packing? What to do in case of damaged goods during transport?**

**A1:** Our Normal packing is bulking in Cartons, less than 20 kgs/carton, 48 cartons / pallet. We also can pack products according to your requirement.

**A2:** To avoid any subsequent trouble regarding quality issue, we suggest you check the goods once you receive them. If there is any transport damaged or quality issue, don't forget take the detail pictures and contact us as soon as possible, we will properly handle it to make sure your loss to reduce to the smallest.

**Q5: Can I get discounts?**

**A:** Yes, for big order, frequent customers, we give reasonable discounts.

Q6: Do you have enough capacity?

A: Our production equipment is a new imported equipment. We have a group of skilled workers who have been working for more than 10 years. Their production experience is very rich and their skills are very skilled. The screws can be 30 million pcs/month. We have sufficient funds to ensure the normal operation of the factory.



**Finexpress Precision Manufacturing (dongguan) Co., Ltd**



+86-13527934468



alianchen@finexfastener.com



metalscrewfastener.com

Building 2, No. 129 Xinmalian Xinma Road, Dalang Town, Dongguan, Guangdong, China