

## WN5451 Torx Drive Delta PT Screws for Plastics Tested Reliability and Mechanical Dimensions

### Our Product Introduction

#### Basic Information

- Place of Origin: Guangdong, China
- Brand Name: FinExpress
- Model Number: PT Screws PWB4\*16 PT
- Minimum Order Quantity: 30000
- Price: \$0.01/pieces >=30000 pieces
- Packaging Details: 1.1000pcs / plastic bag,20kgs/ carton ,then put on the wood pallet ,  
2.Carton size:28cm\*18cm\*13cm,  
3.Wood pallet size:118cm\*113cm,Weight:700~800Kg  
Bulk:0.8 cubic  
4.The weight of 20 FT Container:20~25 Tons  
5,As your requirements
- Delivery Time: 7~15 Working Day
- Payment Terms: T/T, L/C, D/A, D/P
- Supply Ability: 500000000 Piece/Pieces per Week

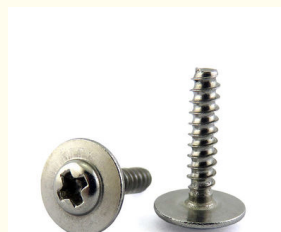
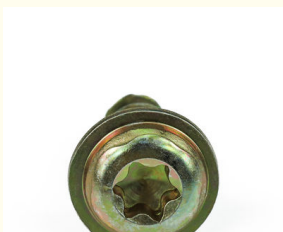


#### Product Specification

- Finish: ZINC, Plain
- Material: Stainless Steel, Steel, Carbon Steel
- Measurement System: Metric
- Head Style: Pan, Flat
- Standard: EJOT, Delta, EJOT WN Series
- Specifications: "Plasfit" - PT Screws For Thermoplastic
- Hardness: Surface Hardness,HV400~500 HV0.3,Core Hardness,320~380HV10
- Breaking Torque: (N.m):0.8~32
- Heat Treatment: Tempering,Spheroidizing, Quenching, Spheroidizing Annealing Etc
- Size: M1.6~M10 Or #2-56~1/2"or Be Customized
- Package: ISO9001:2015,Small Packing+Carton Packing+Pallet SGS, RoHs
- Function Range: Only For Plastics And Thin Sheet Metal
- Reliability Test: Mechanical Dimentions, Hardness Test. Salt



#### More Images



## Product Description

WN5451 Torx Drive Delta PT Screws for Plastics Tested Reliability and Mechanical Dimensions

### FINEX | Fine and Express FASTENERS



Featuring a Torx drive, the WN5451 screws offer a secure fit with Torx - tipped tools. This design reduces the risk of slipping during installation, enabling you to apply torque accurately. It allows for quick and efficient fastening, saving you time, especially when working on large - scale plastic - related projects.

### Delta PT Threads for Plastics

The Delta PT threads are specifically engineered for use in plastics. They cut and form threads within the plastic material as the screw is driven in, eliminating the need for pre - tapping. This results in a tight and reliable connection while minimizing the risk of plastic cracking. The unique thread design is suitable for various plastic types, from soft PVC to rigid acrylic.

### High - Quality Build

Made from durable materials, these screws are built to last. They can withstand the mechanical stress during installation and regular use without breaking or deforming. The robust construction ensures they maintain their integrity in different environmental conditions, making them a dependable choice for your plastic - fastening needs.

### Tested Reliability and Mechanical Dimensions

Each WN5451 screw undergoes rigorous testing for reliability and mechanical dimensions. We ensure that the screws meet strict quality standards, guaranteeing consistent performance. The precise mechanical dimensions ensure a perfect fit with plastic components, providing a stable and long - lasting connection.

## Versatile Applications

These screws are ideal for a wide range of applications in the plastic industry. Whether you're assembling plastic furniture, manufacturing plastic enclosures for electronics, or working on DIY plastic projects, the WN5451 Torx Drive Delta PT Screws are a reliable fastening solution.

**FINEX | Fine and Express**  
**FASTENERS**    

[Click Here To Start Customizing](#)  
**Customizable Hole Shape**



**Pozi**



**Phillips**



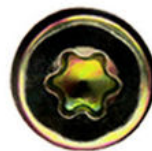
**Anti-theft  
Triangle**



**Slotted**



**Hex Socket**



**Torx**



**Torx-internal  
Tamper proof pin**



**H type  
anti theft**



**Tri-wing**



**Two-Hole  
Tamper proof**



**One way  
anti theft**



**Square Slot  
Combination**



**Phillips Slot  
Combination**



**Slot 6 Lobe  
Combination**



**Tri-wing internal  
Tamper proof pin**







**FINEX | Fine and Express**  
**FASTENERS**    

**OEM** **ODM**  
ORIGINAL ORIGINAL  
EQUIPMENT DESIGN  
MANUFACTURER MANUFACTURER

**What We Produce is Not Just a Screw. We Provide a Guarantee of Secure Fastening**



## Specification

### More Detail Informations

Available Material

- 1.Stainless Steel: SS303, SS304, SS316, SS410, SS420;
  - 2.Carbon steel: C1006,C1010,C1018,C1022,C1035K,C1045;
  - 3.Brass: C3602,C3604,Hpb59,Hpb62,Hpb65,Hpb58,Hpb70 ;
  - 4.Aluminum: Al6061, Al6063 etc
- or as your requirements

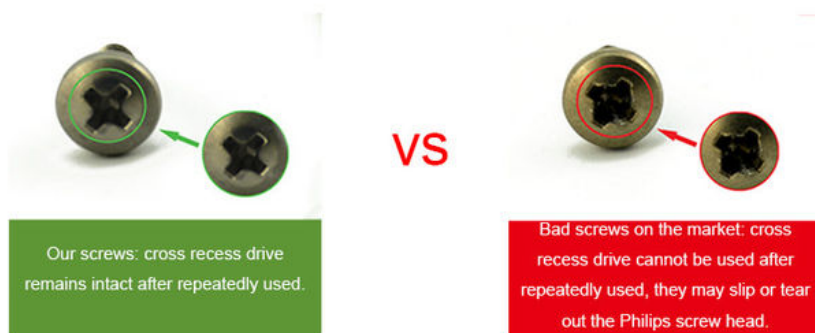
Head type

CSK Head,Pan Head,Truss Head,Hexagon Head,Round Head,Oval Head,Button Head,Cap Head,Cheese Head,etc.

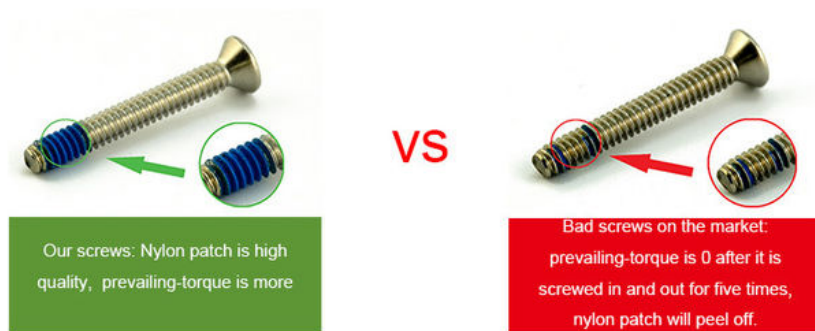
Hardness	Carbon Steel:HRC:28~35 ,HV450~700 Alloy Steel:HRC:32~39(grade10.9) HRC:39~44(grade12.9)
Finish	Zinc plated, Nickel plated, Bronze, Copper,Phosphate, Oxidation black, Passivation, Tin, Dacromet, Gold, Chrome, Silver, Phosphorization,Zinc-nickel alloy plated etc.
Sample Available	The sample is free of charge if we have the existing tooling,you only need to pay for the freight cost
Delivery time	Samples time 3-5 working days, Lead time 20-25 working days
Pricing Term	EXW Dongguan(FCA),FOB, CIF, CNF, DDU,etc.
Packing	Bulk in PE bag or Small boxes.then in carton .pallet
Payment term	TT (30% in advance as deposit, balance before delivery) , L/C, Western Union,PayPal etc
Management system	ISO9001:2015
Certificate	ISO,ROHS

## Why Choose Us

### NO1.Drive compariason



### NO2.Torque comparison





### NO3.Screw Plating Comparison



Our screws: good finish, clear thread, even coating, bright appearance.

VS



Bad screws on the market: bad finish, uneven coating, thread is oxidized, the finish is blacked.

### NO4.Screw Material Comparison



Our screws: we use quality carbon steel material, Chemical Element content in Steel meets the requirement of ISO standard, they won't be broken after 90° bent, high strength, good toughness requirement of ISO

VS



Bad screws on the market: bad carbon steel material, Chemical Element content in Steel doesn't meet the requirement of ISO standard, they will be easily broken after 90° bent, high strength and bad toughness.

### NO5.Mechanical Properties comparison



Our self tapping screws: our screws have high strength, enough hardness, good toughness after heat treated, they won't be broken after bent.

VS



Bad screws on the market: they have high strength and bad toughness, thread will easily be broken, because the screws are not tempered.

### NO6. Corrosion Resistance Comparison of SUS304



Our SUS304 screws: nickel chemical element content won't be less than 8, meets ISO requirement. The finish won't be oxidized, rusted and has good anti-corrosion capacity standard, they won't be broken after 90° bent, high strength, good toughness.

VS



SUS304 screws on the market: nickel chemical element content will be less than 8, even doesn't have nickel plated, which doesn't meet ISO requirement. The finish will be oxidized, rusted and lose anti-corrosion capacity.

# FINEX

## — 20 YEARS

### Non-standard Fasteners Customization Experience

+86-13527934468

alianchen@finexfastener.com

### Contact us



## Partners and Exhibitions







## FAQ

**Q1: What is your main products and material supply?**

**A1:** Our main products are Electronic screws, Sems screws, Tapping screws, Chicago screws, Shoulder screws etc. Special Non-standard studs, Turning parts and High-end precision complex CNC Machining parts etc.

**A2:** Carbon Steel, Alloy Steel, Aluminum alloy, Stainless Steel, Brass, Copper, Titanium alloy or according to your requirement.

**Q2: When can I get the price?**

**A:** We usually offer you a quotation within 12 hours, and the special offer is not more than 24 hours. Any urgent cases, please contact us directly by phone or send email to us.

**Q3: What about the transportation and delivery date?**

**A:** If the weight of goods more than 80kg, Normally we use shipment to transport the orders. It is about 20-30 days. If the weight of goods less than 80kg, or there are urgent, we can send the goods via air express, It is 3~5 days.

**Q4: What's your packing? What to do in case of damaged goods during transport?**

**A1:** Our Normal packing is bulking in Cartons, less than 20 kgs/carton, 48 cartons / pallet. We also can pack products according to your requirement.

**A2:** To avoid any subsequent trouble regarding quality issue, we suggest you check the goods once you receive them. If there is any transport damaged or quality issue, don't forget take the detail pictures and contact us as soon as possible, we will properly handle it to make sure your loss to reduce to the smallest.

**Q5: Can I get discounts?**

**A:** Yes, for big order, frequent customers, we give reasonable discounts.

Q6: Do you have enough capacity?

A: Our production equipment is a new imported equipment. We have a group of skilled workers who have been working for more than 10 years. Their production experience is very rich and their skills are very skilled. The screws can be 30 million pcs/month. We have sufficient funds to ensure the normal operation of the factory.



**Finexpress Precision Manufacturing (dongguan) Co., Ltd**



+86-13527934468



alanchen@finexfastener.com



metalscrewfastener.com

Building 2, No. 129 Xinmalian Xinma Road, Dalang Town, Dongguan, Guangdong, China