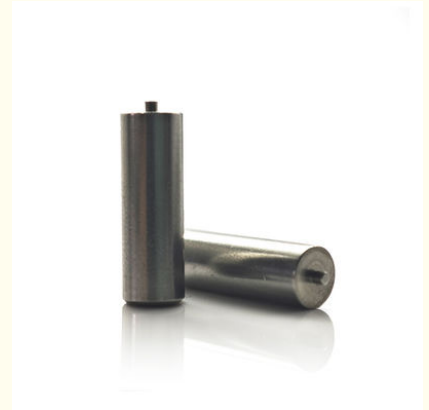


## Clevis Pins and Stainless Steel Cylindrical Locating Pins for Fitting

### Our Product Introduction

#### Basic Information

- Place of Origin: Guangdong, China
- Brand Name: Finex
- Model Number: FINEX Clevis pins
- Minimum Order Quantity: 30000
- Price: \$0.05/pieces 1000-29999 pieces
- Packaging Details: 1.1000pcs / plastic bag,20kgs/ carton ,then put on the wood pallet ,  
2.Carton size:28cm\*18cm\*13cm,  
3.Wood pallet size:118cm\*113cm,Weight:700~800Kg  
Bulk:0.8 cubic  
4.The weight of 20 FT Container:20~25 Tons  
5,As your requirements
- Delivery Time: 7~15 Working Day
- Payment Terms: T/T, L/C, D/A, D/P
- Supply Ability: 500000000 Piece/Pieces per Week



#### Product Specification

- Type: Clevis Pins
- Finish: Bright(Uncoated)
- Certificate: ROHS
- Service: Customized OEM
- Packing: Plastic Bag+carton+pallet
- Delivery Time: In Stock 5~7 Working Days, Customized 15~25 Working Days
- Function: Fitting
- MOQ: 1 Piece In Stock, 30,000 Pcs Customized
- Highlight: cylindrical metal screw eye,  
cylindrical metal screw fastener,  
stainless steel metal screw eye



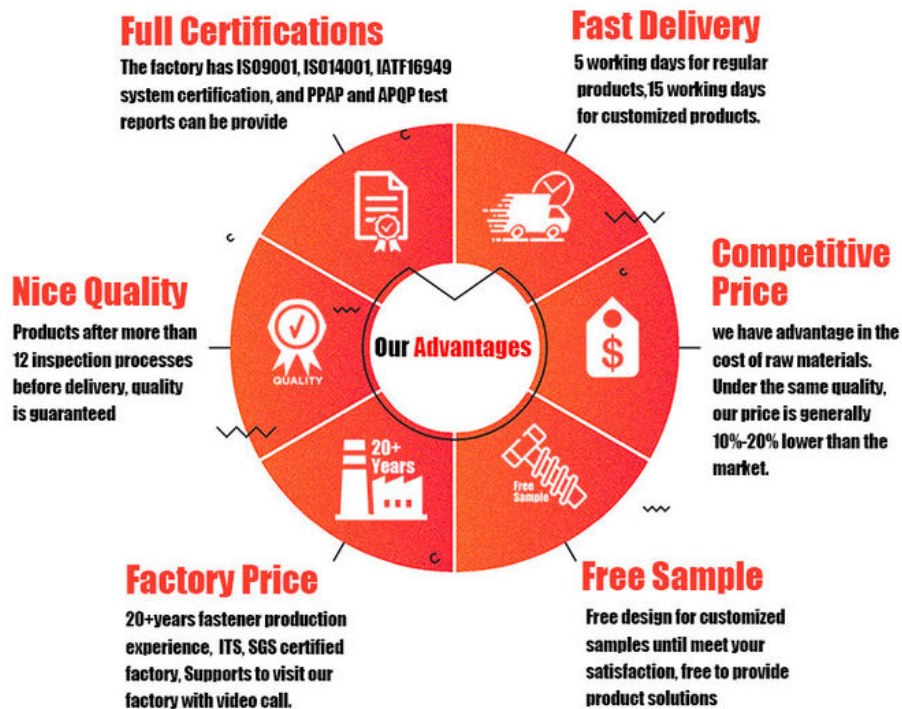
#### More Images



## Product Description

Clevis Pins and Stainless Steel Cylindrical Locating Pins for Fitting

### FINEX | Fine and Express FASTENERS



## Product Overview

Optimize your assembly processes with our **Stainless Steel Clevis Pins and Cylindrical Locating Pins**, engineered for precision alignment, secure fastening, and long-lasting performance in demanding environments. Combining the robustness of stainless steel with precision manufacturing, these pins ensure reliable component positioning, vibration resistance, and corrosion protection for industries ranging from automotive to aerospace.

## Clevis Pins: Secure Connections Under Pressure

### High-Strength Stainless Steel

Crafted from 304/316 stainless steel, clevis pins withstand extreme loads, temperatures, and corrosive conditions, making them ideal for marine, chemical, and outdoor applications.

### Versatile Fastening

Designed for use with clevis forks, yokes, and linkages to secure hydraulic systems, control arms, and rigging hardware.

**Safety Locking Mechanism**

Pre-drilled holes for cotter pins, split rings, or wire locks to prevent accidental disengagement in high-vibration environments.

**Clevis Pin Specifications**

**Material:** 304/316 Stainless Steel

**Diameter:** 3mm–25mm

**Length:** 15mm–200mm (customizable up to 300mm)

**Finish:** Bright polished, passivated, or electropolished

**Load Capacity:** Up to 2,500 N (dependent on diameter)

**Standards:** ISO 1234, DIN 11024, ASTM F3148

**Cylindrical Locating Pins: Precision Alignment Guaranteed**

**Ultra-Precise Tolerance**

CNC-machined to  $\pm 0.01$ mm tolerance for flawless alignment of gears, bearings, jigs, and fixtures.

**Smooth Bright Finish**

Uncoated stainless steel surface reduces friction, resists galling, and ensures easy insertion/removal.

**Durability in Harsh Conditions**

Resistant to corrosion, oxidation, and temperatures from **-40°F to 800°F** (-40°C to 427°C).

**Locating Pin Specifications**

**Material:** 304/316 Stainless Steel

**Diameter:** 2mm–20mm

**Length:** 10mm–150mm (custom lengths up to 250mm)

**Hardness:** 80–90 HRB

**Standards:** ISO 8734, DIN 6325



**Pozi**



**Phillips**



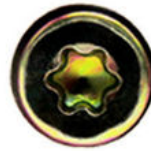
**Anti-theft  
Triangle**



**Slotted**



**Hex Socket**



**Torx**



**Torx-internal  
Tamper proof pin**



**H type  
anti theft**



**Tri-wing**



**Two-Hole  
Tamper proof**



**One way  
anti theft**



**Square Slot  
Combination**



**Phillips Slot  
Combination**



**Slot 6 Lobe  
Combination**



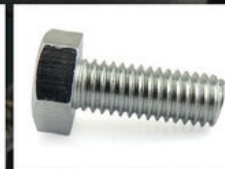
**Tri-wing internal  
Tamper proof pin**



**Blue Zinc**



**Yellow Zinc**



**White Zinc**



**Black Zinc**



**Nickel Plated**



**Black Oxide**



**Anodizing**



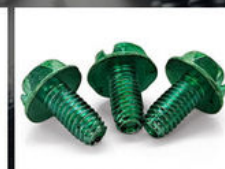
**Dacromet**



**Black  
Electrophoresis**



**Antique Bronze**



**Green**



**Baking Finish**





**What We Produce is Not Just a Screw. We Provide a Guarantee of Secure Fastening**

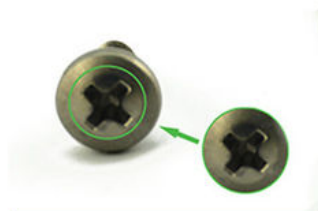


## Specification

More Detail Informations	
Available Material	1.Stainless Steel: SS303, SS304, SS316, SS410, SS420; 2.Carbon steel: C1006,C1010,C1018,C1022,C1035K,C1045; 3.Brass: C3602,C3604,Hpb59,Hpb62,Hpb65,Hpb58,Hpb70 ; 4.Aluminum: Al6061, Al6063 etc or as your requirements
Head type	CSK Head,Pan Head,Truss Head,Hexagon Head,Round Head,Oval Head,Button Head,Cap Head,Cheese Head,etc.
Hardness	Carbon Steel:HRC:28~35 ,HV450~700 Alloy Steel:HRC:32~39(grade10.9) HRC:39~44(grade12.9)
Finish	Zinc plated, Nickel plated, Bronze, Copper,Phosphate, Oxidation black, Passivation, Tin, Dacromet, Gold, Chrome, Silver, Phosphorization,Zinc-nickel alloy plated etc.
Sample Available	The sample is free of charge if we have the existing tooling,you only need to pay for the freight cost
Delivery time	Samples time 3-5 working days, Lead time 20-25 working days
Pricing Term	EXW Dongguan(FCA),FOB, CIF, CNF, DDU,etc.
Packing	Bulk in PE bag or Small boxes.then in carton .pallet
Payment term	TT (30% in advance as deposit, balance before delivery) , L/C, Western Union,PayPal etc
Management system	ISO9001:2015
Certificate	ISO,ROHS

## Why Choose Us

### NO1.Drive compariason



Our screws: cross recess drive remains intact after repeatedly used.

VS



Bad screws on the market: cross recess drive cannot be used after repeatedly used, they may slip or tear out the Philips screw head.

### NO2.Torque comparison



Our screws: Nylon patch is high quality, prevailing-torque is more

VS



Bad screws on the market: prevailing-torque is 0 after it is screwed in and out for five times, nylon patch will peel off.

### NO3.Screw Plating Comparison



Our screws: good finish, clear thread, even coating, bright appearance.

VS



Bad screws on the market: bad finish, uneven coating, thread is oxidized, the finish is blacked.

### NO4.Screw Material Comparison



Our screws: we use quality carbon steel material, Chemical Element content in Steel meets the requirement of ISO standard, they won't be broken after 90° bent, high strength, good toughness.requirement of ISO

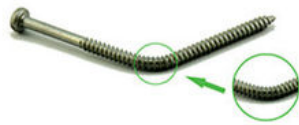
VS



Bad screws on the market: bad carbon steel material, Chemical Element content in Steel doesn't meet the requirement of ISO standard, they will be easily broken after 90° bent, high strength and bad toughness.



## NO5.Mechanical Properties comparison



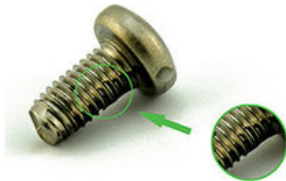
Our self tapping screws: our screws have high strength, enough hardness, good toughness after heat treated, they won't be broken after bent.

VS



Bad screws on the market: they have high strength and bad toughness, thread will easily be broken, because the screws are not tempered.

## NO6. Corrosion Resistance Comparison of SUS304



Our SUS304 screws: nickel chemical element content won't be less than 8, meets ISO requirement. The finish won't be oxidized, rusted and has good anti-corrosion capacity. standard, they won't be broken after 90° bent, high strength, good toughness.

VS



SUS304 screws on the market: nickel chemical element content will be less than 8, even doesn't have nickel plated, which doesn't meet ISO requirement. The finish will be oxidized, rusted and lose anti-corrosion capacity.

## Company Profile

# FINEX

**— 20 YEARS**  
**Non-standard Fasteners**  
**Customization Experience**

+86-13527934468

alianchen@finexfastener.com

**Contact us**





## Partners and Exhibitions



**Raw Material (IQC)**



**Head Size (IPQC)**



**Thread Size (IPQC)**



**Spot check on surface treatment**



**Image Measuring Instrument**



**Hardness Test**



**ROHS Test**



**Salt Spray Test**



**Tensile Force Test**



**Touque Test**



**Screw Optical Screener**



**FQC by Manual Selection**

## FAQ

**Q1: What is your main products and material supply?**

**A1:** Our main products are Electronic screws, Sems screws, Tapping screws, Chicago screws, Shoulder screws etc. Special Non-standard studs, Turning parts and High-end precision complex CNC Machining parts etc.

A2: Carbon Steel, Alloy Steel, Aluminum alloy,Stainless Steel, Brass, Copper ,Titanium alloy or according to your requirement.

Q2: When can I get the price?

A: We usually offer you a quotation within 12 hours, and the special offer is not more than 24 hours.Any urgent cases, please contact us directly by phone or send email to us.

Q3: What about the transportation and delivery date?

A: If the weight of goods more than 80kg,Normally we use shipment to transprot the orders. It is about 20-30days . If the weight of goods less than 80kg,or there are urgent, we can send the goods via air express,It is 3~5 days.

Q4: What's your packing?What to do in case of damaged goods during transport?

A1: Our Normal packing is bulking in Cartons, less than 20 kgs/carton, 48 cartons / pallet. We also can pack products according to your requirement.

A2: To avoid any subsequent trouble regarding quality issue, we suggest you check the goods once you receive them. If there is any transport damaged or quality issue, don't forget take the detail pictures and contact us as soon as possible, we will properly handle it to make sure your loss to reduce to the smallest.

Q5: Can I get discounts?

A: Yes, for big order, frequent customers, we give reasonable discounts.

Q6: Do you have enough capacity?

A: Our production equipment is a new imported equipment. We have a group of skilled workers who have been working for more than 10 years. Their production experience is very rich and their skills are very skilled. The screws can be 30 million pcs/month. We have sufficient funds to ensure the normal operation of the factory.



**Finexpress Precision Manufacturing (dongguan) Co., Ltd**



+86-13527934468



alianchen@finexfastener.com



metalscrewfastener.com

Building 2, No. 129 Xinmalian Xinma Road, Dalang Town, Dongguan, Guangdong, China