

DIN Standard Square Head Bolt 8.8 Grade Carbon Steel for Rail Fastening and Reliability Test

Our Product Introduction

Basic Information

- Place of Origin: Guangdong, China
- Brand Name: FINEX
- Model Number: FINEX Custom bolts and nuts
- Minimum Order Quantity: 30000
- Price: \$0.05/pieces 30000-49999 pieces
- Packaging Details: 1.1000pcs / plastic bag,20kgs/ carton ,then put on the wood pallet ,
2.Carton size:28cm*18cm*13cm,
3.Wood pallet size:118cm*113cm,Weight:700~800Kg
Bulk:0.8 cubic
4.The weight of 20 FT Container:20~25 Tons
5,As your requirements
- Delivery Time: 7~15 Working Day
- Payment Terms: T/T, L/C, D/A, D/P
- Supply Ability: 500000000 Piece/Pieces per Week



Product Specification

- Finish: ZINC, Plain
- Material: Stainless Steel, Steel
- Standard: DIN
- Head Type: Custom Special Head
- Service: OEM Customized Design
- Delivery Time: In Stock 5~7 Working Days, Customized 15~25 Working Days
- Package: Small Packing+Carton Packing+Pallet
- Reliability Test: Mechanical Dimentions, Hardness Test.Salt Spray Endurance Test
- MOQ: 1 Piece In Stock, 30,000 Pieces Customized
- Highlight: **Rail Fastening Square Head Bolt,
8.8 Grade Square Head Bolt,
Carbon Steel Square Head Bolt**



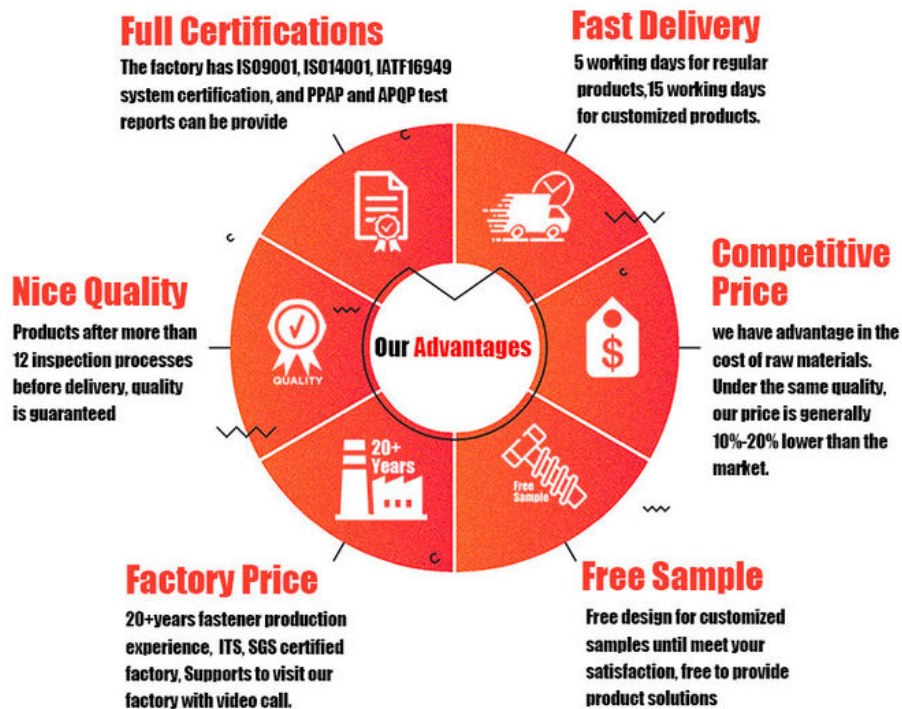
More Images



Product Description

Square Head Bolt –Rail Fastening & 8.8 Grade Carbon Steel

FINEX | Fine and Express FASTENERS



Product Overview

Our Square Head Bolt is engineered for rail fastening systems and structural assemblies requiring high-strength, vibration-resistant fastening. Crafted from Grade 8.8 carbon steel, this bolt combines a square head design for secure wrench engagement with exceptional tensile strength and durability. Ideal for railways, construction, and industrial projects, it meets rigorous demands for load-bearing and environmental resistance.

Key Features

Grade 8.8 Carbon Steel

High Tensile Strength: 800 MPa tensile strength and 640 MPa yield strength for heavy loads.

Durability: Resists shear stress, fatigue, and deformation under dynamic forces.

Square Head Design

Wrench-Friendly: Compatible with standard square wrenches for easy installation and torque control.

Vibration Resistance: Prevents loosening in high-shock environments like railway tracks.

Rail Fastening Optimized

Compliant with Rail Standards: Designed for use in fishplates, tie plates, and track joints.

Corrosion Protection: Optional hot-dip galvanized or black oxide coating for outdoor/railway use.

Versatile Applications

Compatible with nuts, washers, or pre-tapped holes in metal, wood, and composite materials.

FINEX | Fine and Express
FASTENERS    

[Click Here To Start Customizing](#)
Customizable Hole Shape



Pozi



Phillips



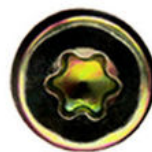
**Anti-theft
Triangle**



Slotted



Hex Socket



Torx



**Torx-internal
Tamper proof pin**



**H type
anti theft**



Tri-wing



**Two-Hole
Tamper proof**



**One way
anti theft**



**Square Slot
Combination**



**Phillips Slot
Combination**



**Slot 6 Lobe
Combination**



**Tri-wing internal
Tamper proof pin**





FINEX | Fine and Express
FASTENERS 🔧 ⚙️ 🛠️ 🔩

OEM ORIGINAL EQUIPMENT MANUFACTURER
ODM ORIGINAL DESIGN MANUFACTURER

What We Produce is Not Just a Screw. We Provide a Guarantee of Secure Fastening



Specification

More Detail Informations

Available Material

- 1.Stainless Steel: SS303, SS304, SS316, SS410, SS420;
 - 2.Carbon steel: C1006,C1010,C1018,C1022,C1035K,C1045;
 - 3.Brass: C3602,C3604,Hpb59,Hpb62,Hpb65,Hpb58,Hpb70 ;
 - 4.Aluminum: Al6061, Al6063 etc
- or as your requirements

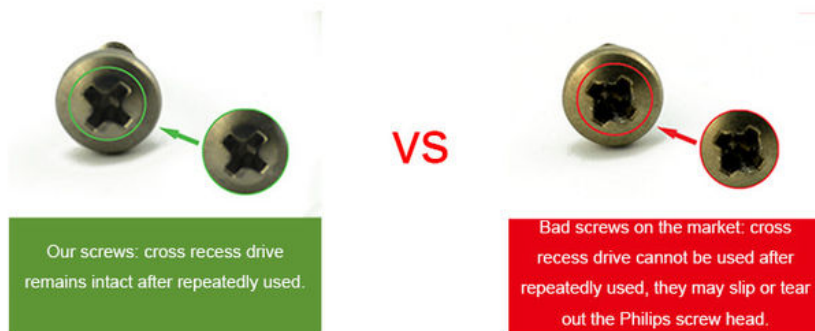
Head type

CSK Head,Pan Head,Truss Head,Hexagon Head,Round Head,Oval Head,Button Head,Cap Head,Cheese Head,etc.

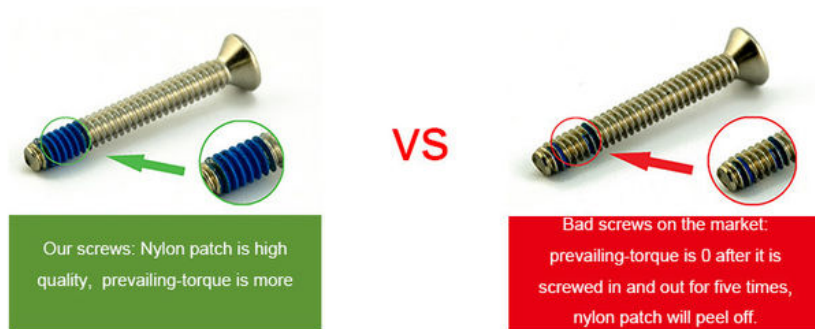
Hardness	Carbon Steel:HRC:28~35 ,HV450~700 Alloy Steel:HRC:32~39(grade10.9) HRC:39~44(grade12.9)
Finish	Zinc plated, Nickel plated, Bronze, Copper,Phosphate, Oxidation black, Passivation, Tin, Dacromet, Gold, Chrome, Silver, Phosphorization,Zinc-nickel alloy plated etc.
Sample Available	The sample is free of charge if we have the existing tooling,you only need to pay for the freight cost
Delivery time	Samples time 3-5 working days, Lead time 20-25 working days
Pricing Term	EXW Dongguan(FCA),FOB, CIF, CNF, DDU,etc.
Packing	Bulk in PE bag or Small boxes.then in carton .pallet
Payment term	TT (30% in advance as deposit, balance before delivery) , L/C, Western Union,PayPal etc
Management system	ISO9001:2015
Certificate	ISO,ROHS

Why Choose Us

NO1.Drive compariason



NO2.Torque comparison



NO3.Screw Plating Comparison



Our screws: good finish, clear thread, even coating, bright appearance.

VS



Bad screws on the market: bad finish, uneven coating, thread is oxidized, the finish is blacked.

NO4.Screw Material Comparison



Our screws: we use quality carbon steel material, Chemical Element content in Steel meets the requirement of ISO standard, they won't be broken after 90° bent, high strength, good toughness requirement of ISO

VS



Bad screws on the market: bad carbon steel material, Chemical Element content in Steel doesn't meet the requirement of ISO standard, they will be easily broken after 90° bent, high strength and bad toughness.

NO5.Mechanical Properties comparison



Our self tapping screws: our screws have high strength, enough hardness, good toughness after heat treated, they won't be broken after bent.

VS



Bad screws on the market: they have high strength and bad toughness, thread will easily be broken, because the screws are not tempered.

NO6. Corrosion Resistance Comparison of SUS304



Our SUS304 screws: nickel chemical element content won't be less than 8, meets ISO requirement. The finish won't be oxidized, rusted and has good anti-corrosion capacity standard, they won't be broken after 90° bent, high strength, good toughness.

VS



SUS304 screws on the market: nickel chemical element content will be less than 8, even doesn't have nickel plated, which doesn't meet ISO requirement. The finish will be oxidized, rusted and lose anti-corrosion capacity.

FINEX

— 20 YEARS

Non-standard Fasteners Customization Experience

+86-13527934468

alianchen@finexfastener.com

Contact us



Partners and Exhibitions





FAQ

Q1: What is your main products and material supply?

A1: Our main products are Electronic screws, Sems screws, Tapping screws, Chicago screws, Shoulder screws etc. Special Non-standard studs, Turning parts and High-end precision complex CNC Machining parts etc.

A2: Carbon Steel, Alloy Steel, Aluminum alloy, Stainless Steel, Brass, Copper, Titanium alloy or according to your requirement.

Q2: When can I get the price?

A: We usually offer you a quotation within 12 hours, and the special offer is not more than 24 hours. Any urgent cases, please contact us directly by phone or send email to us.

Q3: What about the transportation and delivery date?

A: If the weight of goods more than 80kg, Normally we use shipment to transport the orders. It is about 20-30 days. If the weight of goods less than 80kg, or there are urgent, we can send the goods via air express, It is 3~5 days.

Q4: What's your packing? What to do in case of damaged goods during transport?

A1: Our Normal packing is bulking in Cartons, less than 20 kgs/carton, 48 cartons / pallet. We also can pack products according to your requirement.

A2: To avoid any subsequent trouble regarding quality issue, we suggest you check the goods once you receive them. If there is any transport damaged or quality issue, don't forget take the detail pictures and contact us as soon as possible, we will properly handle it to make sure your loss to reduce to the smallest.

Q5: Can I get discounts?

A: Yes, for big order, frequent customers, we give reasonable discounts.

Q6: Do you have enough capacity?

A: Our production equipment is a new imported equipment. We have a group of skilled workers who have been working for more than 10 years. Their production experience is very rich and their skills are very skilled. The screws can be 30 million pcs/month. We have sufficient funds to ensure the normal operation of the factory.



Finexpress Precision Manufacturing (dongguan) Co., Ltd



+86-13527934468



alanchen@finexfastener.com



metalscrewfastener.com

Building 2, No. 129 Xinmalian Xinma Road, Dalang Town, Dongguan, Guangdong, China